



Coastal Plains Community Center

Tel: (361)777-3991

200 Marriot Drive
P.O. Box 1336
Portland, Texas 78374
www.coastalplainsctr.org

Bulletin 1112

March 24, 2023 – March 31, 2023

Applications Accepted via our website www.coastalplainsctr.org. Applicants can upload their Social Security card, **CURRENT** Texas driver's license and a copy of transcripts to be considered for employment. ***Applications must be received by closing date to be eligible for consideration.*** Resumes are **NOT ACCEPTED** in lieu of an application. **We will not accept faxed applications.**

We are an Equal Opportunity/ADA/Affirmative Action Employer

Requirements:

Every person hired at Coastal Plains Community Center is considered an employee of the Center regardless of who made the offer of employment. Employment assignments may change due to budgetary, disciplinary, or administrative reasons. All changes in employment assignments will be handled in accordance with laws prohibiting any form of discrimination. All positions require the ability to work flexible hours and days as needed.

Positions requiring specific academic achievement and/or specific course attainment will require you to attach a copy of a transcript, certification and/or License to your application. All other positions will require verification of high school diploma or GED.

As per the Immigration Reform and Control Act of 1986 (§1200) all applicants for employment are required to provide documents that provide proof of employment authorization and identity. (Social Security Card, Driver's License, and (or) alternate documents as per regulations).

Criminal convictions involving personal injury, threat to another person, drug related offenses, etc., may make you ineligible for employment at Coastal Plains Community Center. Names of prospective employees are cleared through the Texas Department of Public Safety to determine the existence of such records. Falsification of the application for employment is grounds for dismissal, if employed.

For positions that require travel/driving, applicants must maintain a class "C" driver's license with a favorable driving record as evidenced by DPS Moving Violation report.

Coastal Plains Community Center is a DRUG FREE WORKPLACE. Effective August 1, 1996, before employment, all applicants are given a "conditional" offer of employment and will be required to take and pass a drug test. Physical assessment tests will be required for certain positions.

Effective July 1, 2002, all applicants for employment will be notified that prior to an offer of employment, they will be screened for previous confirmation of a class I confirmed incident or incidents of abuse or neglect against a consumer or consumers. Applicants with a confirmed history of abuse or neglect will not be considered for employment.

Caseworker III (Adult)
Rockport
Monday-Friday 8-5
\$3,143.00 – \$3,342.00 Monthly
Posting: #2186
Closes: Until Filled



Coastal Plains Community Center is committed to providing a Trauma-informed environment for employees and the people we serve.

About our Organization:

Coastal Plains is a certified community behavioral health center (CCBHC). The center provides behavioral health services, primary health services, and substance use services to children and adults. We offer employees a strong benefit package which includes the above posted salary. Our philosophy is to take care of our employees so they can take care of the people we serve.

Caseworker responsibilities:

Works as a member of an integrated treatment team. Staff is responsible for providing rehabilitation, Crisis services and support services to Adult consumers identified with severe and persistent mental illness. Services provided to individuals in authorized level of care including Pharmacological management services, and rehabilitation services. The Case Manager will work as a floater for the Aransas Pass and the Rockport clinics. Nature of work requires frequent in-person, long-term contact with individuals, family members, and service providers. Job performance requires an automobile, extensive travel, and flexible hours to provide services. Job also requires staff to facilitate skills activities in a group or individual setting to clients served by Coastal Plains Community Center. Works under the supervision of the Clinic Director or designee. Job requires high level of clinical skills necessary for independent judgment. Will work directly with treatment team for clients who have experienced a First Episodic Break.

MINIMUM QUALIFICATIONS:

- A bachelor's degree from an accredited college or university that allows for QMHP-CS/QIDD credentialing. Salary is commensurate with education and experience per Coastal Plains' career ladder. Class "C" operator's licenses with evidence of a good driving record. Reliable transportation a must.

PREFERRED REQUIREMENTS:

- Knowledge of the needs and characteristics associated with the target population.
- Proficient computer skills to perform job functions.
- Ability to communicate effectively both orally and in writing.
- Knowledge of local community resources and how to access those services.
- Ability to demonstrate knowledge on the importance of productivity, time management, and organizational skills.
- Ability to establish a therapeutic relationship with consumers and their support system and to set and maintain boundaries.
- Ability to maintain a Class "C" license with less than ten (10) penalty points.

BENEFIT PACKAGE:

- Free LPC-A supervision
- A fully funded health, dental, vision package and short-term disability
- \$10,000 employer sponsored life insurance
- Elective life up to 100k guaranteed issue at sign on
- Employer sponsored retirement plan 401(a) with 150% matching funds
- Elective retirement plan 403(b) option
- 10 paid holidays
- 144 hours of paid vacation
- Potential end of year merit

**Case Manager II/III
Falfurrias (Youth)
Monday-Friday 8-5
\$3,143.00-\$3,342.00 Monthly
Posting: #2201
Closes: Until Filled**



Coastal Plains Community Center is committed to providing a Trauma-informed environment for employees and the people we serve.

About our Organization:

Coastal Plains is a certified community behavioral health center (CCBHC). The center provides behavioral health services, primary health services, and substance use services to children and adults. We offer employees a strong benefit package which includes the above posted salary. Our philosophy is to take care of our employees so they can take care of the people we serve.

Case Manager responsibilities:

The Case Manager works with the Center's Youth and Adolescent program to help clients improve mental health symptoms by providing Case Management, Rehabilitative Skills Training and support services. Works closely with other youth team members and community partners. Nature of work involves virtual care, and in-person contact with individuals and their caretaker at the office, school, and/or home location. Job requires some clinical skills necessary for independent judgment. Job performance requires an automobile and flexible hours to provide services. Works under the supervision of the Youth and Family program manager or designee.

MINIMUM QUALIFICATIONS:

A Bachelor's degree from an accredited college or university with a major in psychology, sociology, behavioral health, or human services. Salary is commensurate with education and experience per Coastal Plains' career ladder.

PREFERRED REQUIREMENTS:

- Knowledge of Microsoft office and basic computer skills.
- Able to communicate orally in Spanish.
- One-year of experience in Mental Health Case management/rehab skills training.
- One-year of experience working with youth, adolescents, and families.
- Maintain a class "C" license with less than 10 penalty points.
- Lives within a 30-minute commute from Falfurrias, Texas.
- Master's degree in major of social, behavioral health, or human services.

BENEFIT PACKAGE:

- Free LPC-A supervision
- A fully funded health, dental, vision package and short-term disability
- \$10,000 employer sponsored life insurance
- Elective life up to 100k guaranteed issue at sign on
- Employer sponsored retirement plan 401(a) with 150% matching funds
- Elective retirement plan 403(b) option
- 10 paid holidays
- 144 hours of paid vacation
- Longevity pay
- Potential end of year merit

Case Manager III
Taft
Monday-Friday 8-5
\$3,143.00-\$3,342.00 Monthly
Posting: #2205
Closes: Until Filled



Coastal Plains Community Center is committed to providing a Trauma-informed environment for employees and the people we serve.

About our Organization:

Coastal Plains is a certified community behavioral health center (CCBHC). The center provides behavioral health services, primary health services, and substance use services to children and adults. We offer employees a strong benefit package which includes the above posted salary. Our philosophy is to take care of our employees so they can take care of the people we serve.

Case Manager responsibilities:

The Case Manager works as a member of an integrated treatment team. Staff is responsible for providing rehabilitation, crisis services and support services to adult consumers identified with severe and persistent mental illness. Services provided to individuals in authorized level of care include pharmacological management services, and rehabilitation services. Nature of work requires frequent in-person, long-term contact with individuals, family members, and service providers. Job performance requires an automobile, extensive travel, and flexible hours to provide services. Job also requires staff to facilitate skills activities in a group or individual setting to clients served by Coastal Plains Community Center. Works under the supervision of the Clinic Director or designee. Job requires high level of clinical skills necessary for independent judgment.

MINIMUM QUALIFICATIONS:

A Bachelor's Degree from an accredited college or university with a major in Social or Behavioral Health which is defined as psychology, social work, medicine, nursing, rehabilitation, counseling, sociology, human growth and development, physician assistant, gerontology, special education, educational psychology, early childhood education, or early childhood intervention. Salary is commensurate with education and experience per Coastal Plains career ladder. Class C operator's license with evidence of a good driving record.

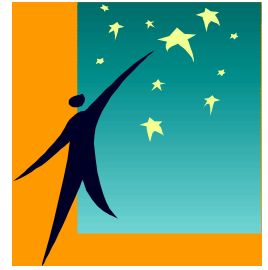
PREFERRED REQUIREMENTS:

- Knowledge of Microsoft office and basic computer skills as demonstrated by a performance exam.
- Able to communicate orally in Spanish.
- Master's Degree.
- One-year experience in adult MH case management/rehab skills training.
- Demonstrates knowledge of local support services available in San Patricio County.

BENEFIT PACKAGE:

- Free LPC-A supervision
- A fully funded health, dental, vision package and short-term disability
- \$10,000 employer sponsored life insurance
- Elective life up to 100k guaranteed issue at sign on
- Employer sponsored retirement plan 401(a) with 150% matching funds
- Elective retirement plan 403(b) option
- 10 paid holidays
- 144 hours of paid vacation
- Longevity pay
- Potential end of year merit

System Analysis I, II
Portland, TX
Monday – Friday 8-5
\$3,342.00 - \$3,788.00 Monthly
Posting: #2207
Until Filled



Coastal Plains Community Center is committed to providing a Trauma-informed environment for employees and the people we serve.

About our Organization: Coastal Plains is a certified community behavioral health center (CCBHC). The center provides behavioral health services, primary health services, and substance use services to children and adults. We offer employees a strong benefit package which includes the above posted salary. Our philosophy is to take care of our employees so they can take care of the people we serve.

System Analysis job responsibilities: The System Analysis position provides first level help desk support to Coastal Plains employees experiencing computer/network/data related problems with limited latitude for the use of initiative and independent judgement. This position assists in managing computer inventory, assists in development of training materials and conducting training classes, and assists in developing DA2 reports. This position requires good customer relations skills, moderately complex problem-solving skills and troubleshooting abilities. Maintains confidentially related to consumer and employee information. Reports to the Director of Authority Functions.

MINIMUM QUALIFICATIONS:

- For Systems Analyst I - Associates degree from an accredited college or university with a major in a field related to the position, plus (1) year of experience relevant to the duties to be performed.
- For Systems Analyst II – Bachelor's degree in Computer Science from an accredited college or university with a major in a field related to the position, plus (1) year of experience relevant to the duties to be performed.

PREFERRED REQUIREMENTS:

- Excellent computer skills, specifically in Microsoft software (Word, Excel and PowerPoint)
- Experience with computer networks, Citrix/Terminal Servers
- Extensive experience in the management and use of spread sheets, charts and graphs
- Experience with generating management reports using SQL report generation.
- Knowledge of clinical and billing aspects of MHMR services
- Extensive experience with clinical software
- Ability to organize and prioritize a variety of assignments and to manage time effectively
- Ability to understand and apply complex regulatory guidelines and procedures
- Ability to present effective written and oral training sessions
- Ability to maintain class C operator's license with a good driving record

BENEFIT PACKAGE:

- Free LPC-A supervision
- A fully funded health, dental, vision package and short-term disability
- \$10,000 employer sponsored life insurance
- Elective life up to 100k guaranteed issue at sign on
- Employer sponsored retirement plan 401(a) with 150% matching funds
- Elective retirement plan 403(b) option
- 10 paid holidays
- 144 hours of paid vacation
- Longevity pay
- Potential end of year merit

Human Services Tech II, III, IV
Odem
Weekend
\$1,869.00-\$2,081.00 Monthly
Posting: #2209
Closes: Until Filled



Coastal Plains Community Center is committed to providing a Trauma-informed environment for employees and the people we serve.

About our Organization:

Coastal Plains is a certified community behavioral health center (CCBHC). The center provides behavioral health services, primary health services, and substance use services to children and adults. We offer employees a strong benefit package which includes the above posted salary. Our philosophy is to take care of our employees so they can take care of the people we serve.

Human Services Tech responsibilities:

This position is primarily responsible for assisting cognitively challenged individuals in a group home setting. This position provides direct care, supervision, and training. Duties include transporting individuals, self-help or independent living skills training, documentation, maintenance of home, medical appointments, and assisting with their finances. This position reports to the Director of Waiver Services.

MINIMUM QUALIFICATIONS:

- A high school diploma or GED certificate
- A valid class "C" Texas Driver's license, with a good driving record

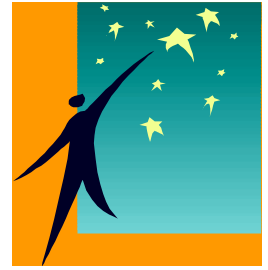
PREFERRED REQUIREMENTS:

- Work history demonstrating an ability to work under minimal supervision.
- Stable work record demonstrated by longevity with previous employer (Two years or longer).
- Local residency within 20 minutes commute of duty station.
- Previous experience working with persons with cognitive disabilities.

BENEFIT PACKAGE:

- Pay enhancement for CMA or CAN certification
- A fully funded health, dental, vision package and short-term disability
- \$10,000 employer sponsored life insurance
- Elective life up to 100k guaranteed issue at sign on
- Employer sponsored retirement plan 401(a) with 150% matching funds
- Elective retirement plan 403(b) option
- 10 paid holidays
- 144 hours of paid vacation
- Longevity pay
- Potential end of year merit

Case Manager III
Taft
Monday-Friday 8-5 (Flex)
\$3,143.00 - \$3,342.00 Monthly
Posting: #2215
Closes: Until filled



Coastal Plains Community Center is committed to providing a Trauma-informed environment for employees and the people we serve.

About our Organization:

Coastal Plains is a certified community behavioral health center (CCBHC). The center provides behavioral health services, primary health services, and substance use services to children and adults. We offer employees a strong benefit package which includes the above posted salary. Our philosophy is to take care of our employees so they can take care of the people we serve.

Case Manager responsibilities:

Works as a member of an integrated treatment team. Staff is responsible for providing rehabilitation, crisis services and support services to adult consumers identified with severe and persistent mental illness. Services provided to individuals in authorized level of care include pharmacological management services, and rehabilitation services. Nature of work requires frequent in-person, long-term contact with individuals, family members, and service providers. Job performance requires an automobile, extensive travel, and flexible hours to provide services. Job also requires staff to facilitate skills activities in a group or individual setting to clients served by Coastal Plains Community Center. Works under the supervision of the Clinic Director or designee. Job requires high level of clinical skills necessary for independent judgment.

MINIMUM QUALIFICATIONS:

A Bachelor's Degree from an accredited college or university with a major in Social or Behavioral Health which is defined as psychology, social work, medicine, nursing, rehabilitation, counseling, sociology, human growth and development, physician assistant, gerontology, special education, educational psychology, early childhood education, or early childhood intervention. Salary is commensurate with education and experience per Coastal Plains career ladder. Class C operator's license with evidence of a good driving record.

PREFERRED REQUIREMENTS:

- Knowledge of Microsoft office and basic computer skills as demonstrated by a performance exam.
- Able to communicate orally in Spanish.
- Master's Degree.
- One-years' experience in adult MH case management/rehab skills training.
- Demonstrates knowledge of local support services available in San Patricio County.

BENEFIT PACKAGE:

- Free LPC-A supervision
- A fully funded health, dental, vision package and short-term disability
- \$10,000 employer sponsored life insurance
- Elective life up to 100k guaranteed issue at sign on
- Employer sponsored retirement plan 401(a) with 150% matching funds
- Elective retirement plan 403(b) option
- 10 paid holidays
- 144 hours of paid vacation
- Longevity pay
- Potential end of year merit

Facility Safety Technician
Beeville
Monday-Friday 8-5 (Flex)
\$2,081.00 Monthly
Posting: #2217
Closes: Until filled



Coastal Plains Community Center is committed to providing a Trauma-informed environment for employees and the people we serve.

About our Organization:

Coastal Plains is a certified community behavioral health center (CCBHC). The center provides behavioral health services, primary health services, and substance use services to children and adults. We offer employees a strong benefit package which includes the above posted salary. Our philosophy is to take care of our employees so they can take care of the people we serve.

Facility Safety Technician responsibilities:

Work involves providing a safe and sanitized work environment. Performs routine custodial duties in accordance with Center Infection Control procedures. Promotes Center safety program by identifying and correcting maintenance related to facility and fleet scheduled repairs. Demonstrates the ability to move furniture and office equipment using proper ergonomic techniques. Also responsible for occasional transportation to both Adults and Children who are receiving services at the Center. This position is also responsible for keeping and maintaining the facilities exterior environment to include grounds keeping. Works with minimal supervision, utilizing personal judgment to ensure clients and staffs' safety needs are met by ensuring the condition of the workplace environment. This position reports to the Clinic Director or designee. Other duties as assigned.

MINIMUM QUALIFICATIONS:

- High school diploma or GED certificate.
- Current Class C operator's license with a good driving record as evidenced by verification of driving record through DPS plus one (1) year experience relevant to the duties to be performed.

PREFERRED REQUIREMENTS:

- Knowledge of motor vehicle operations, or passenger loading and unloading methods, traffic regulation, and of the maintenance of motor vehicles.
- Ability to follow sanitization, schedules described in the Center's infection control policy, and fleet preventative maintenance.
- Knowledge of light building maintenance/repairs to include light fixtures, air handler filters, paint and other cosmetic repairs.
- Knowledge of vehicle and building maintenance and ability to monitor maintenance needs.
- Ability to move furniture and/or office equipment without injury to staff or property damage.
- Other duties as assigned to include: Answering phones as needed. Transportation of clients, Delivery of items, Etc.
- Experience in building repair and maintenance.

BENEFIT PACKAGE:

- Free LPC-A supervision
- A fully funded health, dental, vision package and short-term disability
- \$10,000 employer sponsored life insurance
- Elective life up to 100k guaranteed issue at sign on
- Employer sponsored retirement plan 401(a) with 150% matching funds
- Elective retirement plan 403(b) option
- 10 paid holidays
- 144 hours of paid vacation
- Longevity pay
- Potential end of year merit

Care Coordinator III
Kingsville
Monday-Friday 8-5 (Flex)
\$3,143.00 – \$3,342.00 Monthly
Posting: #2220
Closes: Until filled



Coastal Plains Community Center is committed to providing a Trauma-informed environment for employees and the people we serve.

About our Organization:

Coastal Plains is a certified community behavioral health center (CCBHC). The center provides behavioral health services, primary health services, and substance use services to children and adults. We offer employees a strong benefit package which includes the above posted salary. Our philosophy is to take care of our employees so they can take care of the people we serve.

Case Manager responsibilities:

Care Coordinators (CC) coordinate access to medical services and increase continuity of care by managing relationships with care providers, transitions-in-care, and following referrals to other allied health professional care for the physical health needs of CPCC consumers. Care coordinators coordinate, promote timely access to appropriate care, increase utilization of preventative care, reduce emergency room utilization and hospital readmissions, and increase health comprehension through culturally and linguistically appropriate education. Care coordination also requires closing the loop on referrals, exchanging records of services among providers, tracking transitions of care (admissions to and discharges from high levels of care), and active follow-up. Care Coordinators (CC) coordinate access to physical healthcare by arranging and tracking appointments, educating clients/families/LARs about health matters and coordinating services for other aspects of CPCC consumers' wellbeing. This position reports to the Kingsville Clinic Director. Other duties may be assigned at the discretion of the Clinic Director. Position offers excellent benefits including health insurance, excellent retirement package, paid time off and provide a family-friendly work site with a small-town feel. Come join our team!

MINIMUM QUALIFICATIONS:

A Bachelor's Degree from an accredited college or university with a major in Social, Behavioral, or Human Services

PREFERRED REQUIREMENTS:

- Minimum proficiency with computer software as demonstrated by knowledge of Microsoft Applications
- Bilingual English/Spanish
- Lives within service area
- Excellent verbal and written communication skills as demonstrated by oral and written interview
- Demonstrated ability to thrive in productivity driven environment
- Experience working with this target population
- Masters degree

BENEFIT PACKAGE:

- Free LPC-A supervision
- A fully funded health, dental, vision package and short-term disability
- \$10,000 employer sponsored life insurance
- Elective life up to 100k guaranteed issue at sign on
- Employer sponsored retirement plan 401(a) with 150% matching funds
- Elective retirement plan 403(b) option
- 10 paid holidays
- 144 hours of paid vacation
- Longevity pay
- Potential end of year merit

Case Manager III (Adult MH)
Beeville
Monday-Friday 8-5 (Flex)
\$3143.00 – 3342.00 Monthly
Posting: #2223
Closes: Until filled



Coastal Plains Community Center is committed to providing a Trauma-informed environment for employees and the people we serve.

About our Organization:

Coastal Plains is a certified community behavioral health center (CCBHC). The center provides behavioral health services, primary health services, and substance use services to children and adults. We offer employees a strong benefit package which includes the above posted salary. Our philosophy is to take care of our employees so they can take care of the people we serve.

Case Manager III responsibilities:

Works as a member of an integrated treatment team. Staff is responsible for providing rehabilitation, Crisis services and support services, to Adult consumers identified with severe and persistent mental illness. Services provided to individuals in authorized level of care include Pharmacological management services, and rehabilitation services. Nature of work requires frequent in-person, long-term contact with individuals, family members, and service providers. Job performance requires an automobile, extensive travel, and flexible hours to provide services. Job also requires staff to facilitate skills activities in a group or individual setting to clients served by Coastal Plains Community Center. Works under the supervision of the Clinic Director or designee. Job requires high level of clinical skills necessary for independent judgment.

MINIMUM QUALIFICATIONS:

A Bachelor's Degree from an accredited college or university with a major in Social or Behavioral Health which is defined as psychology, social work, medicine, nursing, rehabilitation, counseling, sociology, human growth and development, physician assistant, gerontology, special education, educational psychology, early childhood education, or early childhood intervention. Salary is commensurate with education and experience per Coastal Plains career ladder. Class C operators license with evidence of a good driving record

PREFERRED REQUIREMENTS:

- Knowledge of Microsoft office and basic computer skills as demonstrated by a performance exam.
- Able to communicate orally in Spanish.
- Master's Degree.
- One year experience in adult MH case management/rehab skills training.
- Demonstrates knowledge of local support services available in Bee and Live Oak County to persons served.

BENEFIT PACKAGE:

- Free LPC-A supervision
- A fully funded health, dental, vision package and short-term disability
- \$10,000 employer sponsored life insurance
- Elective life up to 100k guaranteed issue at sign on
- Employer sponsored retirement plan 401(a) with 150% matching funds
- Elective retirement plan 403(b) option
- 10 paid holidays
- 144 hours of paid vacation
- Longevity pay
- Potential end of year merit

CMA/LVN II

Taft

Monday-Friday 8-5 (Flex)

\$2,206.00 - \$2,783.00 Monthly

Posting: #2224

Closes: Until filled



Coastal Plains Community Center is committed to providing a Trauma-informed environment for employees and the people we serve.

About our Organization:

Coastal Plains is a certified community behavioral health center (CCBHC). The center provides behavioral health services, primary health services, and substance use services to children and adults. We offer employees a strong benefit package which includes the above posted salary. Our philosophy is to take care of our employees so they can take care of the people we serve.

CMA/LVN II responsibilities:

The Position of Certified Medical Assistant and/or Licensed Vocational Nurse, is designed to ensure the effective and efficient delivery of medical assistant services to mental health consumers enrolled in Coastal Plains Community Center. Under General supervision of a registered nurse, is responsible for performing moderately complex medical aide work. Assists nurses to coordinate and assist the clinic psychiatrist on scheduled clinic days; coordinates medication services to consumers, to include injections and pill box service. Complete vitals and assists with the flow of information regarding EKG's and Lab results. Performs medical assistant functions as appropriate. The CMA or LVN serves both the needs of adult and child services. Reports clinically to the Director of Nursing and administratively to the assigned Clinic Director.

For further information please contact Yvonne Flores at 361-592-6481

MINIMUM QUALIFICATIONS:

- Holds current unrestricted certificate as a Certified Medical Assistant in the State of Texas, or is an LVN with active license. Plus, one (1) year experience in assisting medical staff in administering therapeutic programs and monitoring patient conditions.
- Ability to maintain Class "C" driver's license with less than 10 penalty points.

PREFERRED REQUIREMENTS:

- Applicant has knowledge in Office, Outlook, and Excel.
- Applicant lives 30-minute commute from clinic.
- Applicant has experience working in an outpatient setting.
- Applicant has experience working with individuals diagnosed with a mental illness.

BENEFIT PACKAGE:

- Free LPC-A supervision
- A fully funded health, dental, vision package and short-term disability
- \$10,000 employer sponsored life insurance
- Elective life up to 100k guaranteed issue at sign on
- Employer sponsored retirement plan 401(a) with 150% matching funds
- Elective retirement plan 403(b) option
- 10 paid holidays
- 144 hours of paid vacation
- Longevity pay
- Potential end of year merit

Rehab Caseworker III
Aransas Pass
Monday-Friday 8-5
\$3,143.00 – \$3,342.00 Monthly
Posting: #2228
Closes: Until Filled



Coastal Plains Community Center is committed to providing a Trauma-informed environment for employees and the people we serve.

About our Organization:

Coastal Plains is a certified community behavioral health center (CCBHC). The center provides behavioral health services, primary health services, and substance use services to children and adults. We offer employees a strong benefit package which includes the above posted salary. Our philosophy is to take care of our employees so they can take care of the people we serve.

Caseworker responsibilities:

Works as a member of an integrated treatment team. Staff is responsible for providing rehabilitation and support services, to consumers identified with severe and persistent mental illness. Services provided to adult individuals in authorized service package include Pharmacological management services, and rehabilitation services. Nature of work requires frequent in-person, long-term contact with individuals, family members, and service providers. Job performance requires an automobile, extensive travel, and flexible hours to provide services. Job also requires staff to facilitate skills activities in a group or individual setting to clients served by Coastal Plains Community Center. Works under the supervision of the Clinic Director or designee. Job requires high level of clinical skills necessary for independent judgment.

MINIMUM QUALIFICATIONS:

A Bachelor's Degree from an accredited college or university that allows for QMHP-CS/QIDD credentialing. Salary is commensurate with education and experience per Coastal Plains career ladder. Class "C" operator's license with evidence of a good driving record. Reliable transportation a must.

PREFERRED REQUIREMENTS:

- Knowledge of needs and characteristics associated with the target population.
- Proficient computer skills to perform job functions
- Ability to communicate both orally and in writing
- Knowledge of local community resources and how to access those resources
- Ability to demonstrate knowledge on the importance of productivity, time management, and organizational skills.
- Ability to establish a therapeutic relationship with consumers and their support system and to set and maintain boundaries.
- Ability to maintain a Class "C" license with less than ten (10) penalty points.

BENEFIT PACKAGE:

- Free LPC-A supervision
- A fully funded health, dental, vision package and short-term disability
- \$10,000 employer sponsored life insurance
- Elective life up to 100k guaranteed issue at sign on
- Employer sponsored retirement plan 401(a) with 150% matching funds
- Elective retirement plan 403(b) option
- 10 paid holidays
- 144 hours of paid vacation
- Longevity pay
- Potential end of year merit



Case Manager III
Kingsville
Monday-Friday 8-5 (Flex)
\$3143.00 – 3342.00 Monthly
Posting: #2231
Closes: Until filled



Coastal Plains Community Center is committed to providing a Trauma-informed environment for employees and the people we serve.

About our Organization:

Coastal Plains is a certified community behavioral health center (CCBHC). The center provides behavioral health services, primary health services, and substance use services to children and adults. We offer employees a strong benefit package which includes the above posted salary. Our philosophy is to take care of our employees so they can take care of the people we serve.

Case Manager III responsibilities:

Works as a member of an integrated treatment team. Staff is responsible for providing rehabilitation, Crisis services and support services, to Adult consumers identified with severe and persistent mental illness. Services provided to individuals in authorized level of care include Pharmacological management services, and rehabilitation services in the home, office or community setting as well as transportation when needed. Nature of work requires frequent in-person, long-term contact with individuals, family members, and service providers. Job requires staff to facilitate skills activities in a group or individual setting to clients served by Coastal Plains Community Center. Works under the supervision of the Clinic Director or designee. Job requires high level of clinical skills necessary for independent judgment.

MINIMUM QUALIFICATIONS:

A Bachelor's Degree from an accredited college or university with a major in Social or Behavioral Health which is defined as psychology, social work, medicine, nursing, rehabilitation, counseling, sociology, human growth and development, physician assistant, gerontology, special education, educational psychology, early childhood education, or early childhood intervention. Salary is commensurate with education and experience per Coastal Plains career ladder. Class C operator's license with evidence of a good driving record

PREFERRED REQUIREMENTS:

- Knowledge of Microsoft office and basic computer skills as demonstrated by a performance exam.
- Master's degree
- One year experience in adult MH case management/rehab skills training.
- Demonstrates knowledge of local support services available in Kleberg/Kenedy County
- Bilingual (English-Spanish)

BENEFIT PACKAGE:

- Free LPC-A supervision
- A fully funded health, dental, vision package and short-term disability
- \$10,000 employer sponsored life insurance
- Elective life up to 100k guaranteed issue at sign on
- Employer sponsored retirement plan 401(a) with 150% matching funds
- Elective retirement plan 403(b) option
- 10 paid holidays
- 144 hours of paid vacation
- Longevity pay
- Potential end of year merit

**Intake LPHA
Taft
Monday-Friday 8-5 (Flex)
\$4744.00 Monthly
Posting: #2232
Closes: Until filled**



Coastal Plains Community Center is committed to providing a Trauma-informed environment for employees and the people we serve.

About our Organization:

Coastal Plains is a certified community behavioral health center (CCBHC). The center provides behavioral health services, primary health services, and substance use services to children and adults. We offer employees a strong benefit package which includes the above posted salary. Our philosophy is to take care of our employees so they can take care of the people we serve.

APPLICANT QUALIFICATIONS:

GENERAL DESCRIPTION:

This position is responsible for providing CBT, psychosocial assessments, diagnostic evaluations/reviews and will determine eligibility for individuals and families seeking mental health services from Coastal Plains Community Center. This position will provide virtual and face to face services to individuals in our nine county service area.

MINIMUM QUALIFICATIONS:

Must hold current license from the state of Texas in one of the following areas: a medical physician, Licensed Professional Counselor, LMSW-ACP, licensed psychologist, advanced practice nurse, Licensed Clinical Social Worker. Must have a current Texas Driver's license.

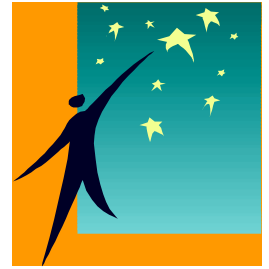
PREFERRED REQUIREMENTS:

1. Any practitioner certified by Academy of Cognitive Therapy, Beck Institute for CBT, or the Reach Institute to provide CBT in the state of Texas or be capable of obtaining CBT certification with assistance from the Center.
2. Practitioner has experience working in an outpatient setting.
3. Practitioner is familiar with entering information into an electronic medical record.

BENEFIT PACKAGE:

- Free LPC-A supervision
- A fully funded health, dental, vision package and short-term disability
- \$10,000 employer sponsored life insurance
- Elective life up to 100k guaranteed issue at sign on
- Employer sponsored retirement plan 401(a) with 150% matching funds
- Elective retirement plan 403(b) option
- 10 paid holidays
- 144 hours of paid vacation
- Longevity pay
- Potential end of year merit

Eligibility Specialist
Taft
Monday-Friday 8-5 (Flex)
\$2472.00 monthly
Posting: #2233
Closes: Until filled



Coastal Plains Community Center is committed to providing a Trauma-informed environment for employees and the people we serve.

About our Organization:

Coastal Plains is a certified community behavioral health center (CCBHC). The center provides behavioral health services, primary health services, and substance use services to children and adults. We offer employees a strong benefit package which includes the above posted salary. Our philosophy is to take care of our employees so they can take care of the people we serve

GENERAL DESCRIPTION:

The Eligibility Specialist is responsible for screening consumers for eligibility for various services, including, Social Security Disability, Social Security Supplemental Income and Medicaid benefits. The Specialist provides the consumers and family education related to the benefits, assists the consumer in completing applications, submits applications, and monitors the progress of the application through the process. The Specialist acts as an advocate for the consumer providing transportation as needed, makes appropriate referrals for assistance in the appeals process and informs the clinic staff of the client's progress through the system. The Eligibility Specialist maintains accurate documentation of events and progress. The Specialist maintains competency regarding latest information regarding benefits and attends quarterly consortia meetings.

MINIMUM QUALIFICATIONS:

High School diploma or GED plus two (3) years experience in the field of work related to the duties of the position.

PREFERRED REQUIREMENTS:

Knowledge of social security benefits and regulations.

Knowledge of sign and symptoms of mental illness.

Ability to communicate effectively, both orally and in writing.

Ability to work independently, organize work efficiently and respond to the changing needs of the consumers.

Ability to use a computer and Windows software.

Case Manager III (IDD)
Portland
Monday-Friday 8-5 (Flex)
\$3143- \$3342 monthly
Posting: #2234
Closes: Until filled



Coastal Plains Community Center is committed to providing a Trauma-informed environment for employees and the people we serve.

About our Organization:

Coastal Plains is a certified community behavioral health center (CCBHC). The center provides behavioral health services, primary health services, and substance use services to children and adults. We offer employees a strong benefit package which includes the above posted salary. Our philosophy is to take care of our employees so they can take care of the people we serve

APPLICANT QUALIFICATIONS:

GENERAL DESCRIPTION:

Provides ongoing case management services for more than 30 persons with IDD and other related conditions. Performs single function case management services to assist assigned individuals in gaining access to medical, social educational and other needed services. Performs the case management duties according to the Service Coordination GR, CFC and Waiver standards. The nature of the work requires aggressive interventions and frequent in person long term contact with the individual's families and service providers. The job requires extensive travel for community-based service provision and flexible hours and schedule. Participates in 24 hour on call system. This position reports to the CFC Supervisor.

MINIMUM QUALIFICATIONS:

Bachelor's degree from an accredited college or university with a major in a Social, Behavioral Health or Human Services which is defined as psychology, social work, medicine, nursing, rehabilitation, counseling, sociology, human growth and development, gerontology, educational psychology, education, and criminal justice. Salary is commensurate with education and experience per Coastal Plains career ladder. Must maintain class "C" drivers license with evidence of a good driving record.

PREFERRED REQUIREMENTS:

- 1.) Case Management or Social Work experience
- 2.) Ability to communicate in Spanish
- 3.) Knowledge of computer programs
- 4.) Good organizational skills

Case Manager III (IDD)
Alice
Monday-Friday 8-5 (Flex)
\$3143- \$3342 monthly
Posting: #2235
Closes: Until filled



Coastal Plains Community Center is committed to providing a Trauma-informed environment for employees and the people we serve.

About our Organization:

Coastal Plains is a certified community behavioral health center (CCBHC). The center provides behavioral health services, primary health services, and substance use services to children and adults. We offer employees a strong benefit package which includes the above posted salary. Our philosophy is to take care of our employees so they can take care of the people we serve

APPLICANT QUALIFICATIONS:

GENERAL DESCRIPTION:

Provides ongoing case management services for more than 30 persons with IDD and other related conditions. Performs single function case management services to assist assigned individuals in gaining access to medical, social educational and other needed services. Performs the case management duties according to the Service Coordination GR, CFC and Waiver standards. The nature of the work requires aggressive interventions and frequent in person long term contact with the individual's families and service providers. The job requires extensive travel for community-based service provision and flexible hours and schedule. Participates in 24 hour on call system. This position reports to the CFC Supervisor.

MINIMUM QUALIFICATIONS:

Bachelor's degree from an accredited college or university with a major in a Social, Behavioral Health or Human Services which is defined as psychology, social work, medicine, nursing, rehabilitation, counseling, sociology, human growth and development, gerontology, educational psychology, education, and criminal justice. Salary is commensurate with education and experience per Coastal Plains career ladder. Must maintain class "C" drivers license with evidence of a good driving record.

PREFERRED REQUIREMENTS:

1. Case Management or Social Work experience
2. Ability to communicate in Spanish
3. Knowledge of computer programs
4. Good organizational skills

Jail Diversion Specialist III
Taft
Monday-Friday 8-5 (Flex)
\$3342 monthly
Posting: #2236
Closes: Until filled



Coastal Plains Community Center is committed to providing a Trauma-informed environment for employees and the people we serve.

About our Organization:

Coastal Plains is a certified community behavioral health center (CCBHC). The center provides behavioral health services, primary health services, and substance use services to children and adults. We offer employees a strong benefit package which includes the above posted salary. Our philosophy is to take care of our employees so they can take care of the people we serve.

Case Manager III responsibilities:

Works as a member of an integrated treatment team. Staff is responsible for providing rehabilitation, Crisis services and support services, to adult consumers identified with severe and persistent mental illness who are involved in the criminal justice system. Services provided to individuals in authorized level of care include Pharmacological Management services, and Rehabilitation services. Nature of work requires frequent in-person, long-term contact with individuals, family members, and service providers. Job performance requires an automobile, some travel, and flexible hours to provide services. Job also requires staff to facilitate skills activities to individuals incarcerated in the San Patricio County Jail. Works under the supervision of the Clinic Director or designee. Job requires high level of clinical skills necessary for independent judgment.

MINIMUM QUALIFICATIONS:

A Bachelor's Degree from an accredited college or university with a major in a Social, Behavioral Health, or Human Services. Salary is commensurate with education and experience per Coastal Plains Career ladder. Class "C" operator's license with less than 10 penalty points.

PREFERRED REQUIREMENTS:

- Knowledge of Microsoft Office and basic computer skills.
- Able to communicate orally in Spanish.
- One year working with MH patients in an out-patient setting.
- Lives within a 30- minute commute from the assigned clinic.
- Masters Degree in major or Social, Behavioral Health or Human Services.

BENEFIT PACKAGE:

- Free LPC-A supervision
- A fully funded health, dental, vision package and short-term disability
- \$10,000 employer sponsored life insurance
- Elective life up to 100k guaranteed issue at sign on
- Employer sponsored retirement plan 401(a) with 150% matching funds
- Elective retirement plan 403(b) option
- 10 paid holidays
- 144 hours of paid vacation
- Longevity pay
- Potential end of year merit

**Case Manager III
Taft (Youth)
Monday-Friday 8-5 (Flex)
\$3143-\$3342 monthly
Posting: #2237
Closes: Until filled**



Coastal Plains Community Center is committed to providing a Trauma-informed environment for employees and the people we serve.

About our Organization:

Coastal Plains is a certified community behavioral health center (CCBHC). The center provides behavioral health services, primary health services, and substance use services to children and adults. We offer employees a strong benefit package which includes the above posted salary. Our philosophy is to take care of our employees so they can take care of the people we serve.

Case Manager III responsibilities:

Performs care coordination with children and their families; gathering behavior, psychological social and developmental information to coordinate and monitor service delivery according to Wraparound Plan. Position will lead the integrated child family team meeting to discover the child and family strengths and identified needs to develop treatment goals, objectives and interventions to reduce identified risk factors. The Wraparound Facilitator will make necessary referrals based on the discovered needs and provides follow up. The nature of work requires frequent contact with individuals, family members and service providers. Caseload is size 1 to 10 ratio. Job performance requires an automobile and flexible hours to provide services. Works under the supervision of the YES Program Manager or designee.

MINIMUM QUALIFICATIONS:

A Bachelor's Degree from an accredited college or university with a major in a Social, Behavioral Health, or Human Services. Salary is commensurate with education and experience per Coastal Plains Career ladder. Class "C" operator's license with less than 10 penalty points.

PREFERRED REQUIREMENTS:

- Knowledge of child and adolescent mental illness.
- Knowledge of basic casework principles and general community resources.
- Job requires high level of clinical skills necessary for independent judgment.
- Ability to communicate effectively.
- Knowledge of casework documentation requirements.
- Knowledge of understanding of program guidelines, policies and procedures and ability to carry out responsibilities.
- Work history that demonstrates an ability to work under minimal supervision.
- Ability to communicate in Spanish.
- Reliable transportation with valid insurance.

**Case Manager III
San Diego MH
Monday-Friday 8-5 (Flex)
\$3143-\$3342 monthly
Posting: #2238
Closes: Until filled**



Coastal Plains Community Center is committed to providing a Trauma-informed environment for employees and the people we serve.

About our Organization:

Coastal Plains is a certified community behavioral health center (CCBHC). The center provides behavioral health services, primary health services, and substance use services to children and adults. We offer employees a strong benefit package which includes the above posted salary. Our philosophy is to take care of our employees so they can take care of the people we serve.

Works with the Center's Youth and Adolescent program to help clients improve mental health symptoms by providing case management, rehabilitative skills training and support services. Works closely with other youth team members and community partners. Nature of work involves virtual care, and in person contact with individuals and their caretaker at the office, school and/or home location. Job requires some clinical skills necessary for independent judgment. Job performance requires an automobile and flexible hours to provide services. Works under the supervision of the Youth and Family program manager or designee.

MINIMUM QUALIFICATIONS: Bachelor's degree from an accredited college or university with a major in social, behavioral health, or human services. Salary is commensurate with education and experience per Coastal Plains career ladder.

PREFERRED REQUIREMENTS:

Knowledge of microsoft office and basic computer skills.

Able to communicate orally in Spanish

One year experience in case management /rehab skills training.

One year working with youth, adolescents and families.

Maintain class C license with less than 10 penalty points.

Master's degree in social, behavior health or human services.

Primary Care Nurse Practitioner
Workstation TBD
Monday-Friday 8-5 (Flex)
\$10,500.00 monthly
Posting: #2239
Closes: Until filled



Coastal Plains Community Center is committed to providing a Trauma-informed environment for employees and the people we serve.

About our Organization:

Coastal Plains is a certified community behavioral health center (CCBHC). The center provides behavioral health services, primary health services, and substance use services to children and adults. We offer employees a strong benefit package which includes the above posted salary. Our philosophy is to take care of our employees so they can take care of the people we serve.

APPLICANT QUALIFICATIONS:

GENERAL DESCRIPTION:

This position is responsible for performing routine examinations to ensure patient primary care health needs are met. The duties involve speaking with patients re: their symptoms, completing initial diagnostic evaluations and follow-ups. This position will prescribe medications and assist with educating patients on prescribed medications and injections. The nurse practitioner will coordinate with other healthcare professionals to ensure referrals are being made when appropriate. This position will work closely with the Center's Medical Director to assist with daily clinic operations. This position will monitor health conditions of individuals opened to the Center's Primary Care Program. This position will report to the Center's CEO and work clinically under the Center's Medical Director.

MINIMUM QUALIFICATIONS:

A master's degree in the field of Nursing. Applicant must be Board Certified as a Nurse Practitioner in the State of Texas.

PREFERRED REQUIREMENTS:

1. Experience with providing medical services in an outpatient setting.
2. Experience with providing training to licensed medical staff.
3. 1-3 years of experience providing primary care services.
4. Board Certified Primary Care Nurse Practitioner (PCNP)