



Coastal Plains Community Center

Tel: (361)777-3991

200 Marriot Drive
P.O. Box 1336
Portland, Texas 78374
www.coastalplainsctr.org

Bulletin 1123

May 26, 2023 – June 2, 2023

Applications Accepted via our website www.coastalplainsctr.org. *If the position has a closing date, the Applications must be received by closing date to be eligible for consideration.* Resumes are **NOT ACCEPTED in lieu of an application. **We will not accept faxed applications.****

We are an Equal Opportunity/ADA/Affirmative Action Employer

Requirements:

Every person hired at Coastal Plains Community Center is considered an employee of the Center regardless of who made the offer of employment. Employment assignments may change due to budgetary, disciplinary, or administrative reasons. All changes in employment assignments will be handled in accordance with laws prohibiting any form of discrimination. All positions require the ability to work flexible hours and days as needed.

Positions requiring specific academic achievement and/or specific course attainment will require you to attach a copy of a transcript, certification and/or License to your application. All other positions will require verification of high school diploma or GED.

As per the Immigration Reform and Control Act of 1986 (§1200) all applicants for employment are required to provide documents that provide proof of employment authorization and identity. (Social Security Card, Driver's License, and (or) alternate documents as per regulations).

Criminal convictions involving personal injury, threat to another person, drug related offenses, etc., may make you ineligible for employment at Coastal Plains Community Center. Names of prospective employees are cleared through the Texas Department of Public Safety to determine the existence of such records. Falsification of the application for employment is grounds for dismissal, if employed.

For positions that require travel/driving, applicants must maintain a class "C" driver's license with a favorable driving record as evidenced by DPS Moving Violation report.

Coastal Plains Community Center is a DRUG FREE WORKPLACE. Effective August 1, 1996, before employment, all applicants are given a "conditional" offer of employment and will be required to take and pass a drug test. Physical assessment tests will be required for certain positions.

Effective July 1, 2002, all applicants for employment will be notified that prior to an offer of employment, they will be screened for previous confirmation of a class I confirmed incident or incidents of abuse or neglect against a consumer or consumers. Applicants with a confirmed history of abuse or neglect will not be considered for employment.

Case Manager III
Taft
Monday-Friday 8-5
\$3,143.00-\$3,342.00 Monthly
Posting: #2205
Closes: Until Filled



Coastal Plains Community Center is committed to providing a Trauma-informed environment for employees and the people we serve.

About our Organization:

Coastal Plains is a certified community behavioral health center (CCBHC). The center provides behavioral health services, primary health services, and substance use services to children and adults. We offer employees a strong benefit package which includes the above posted salary. Our philosophy is to take care of our employees so they can take care of the people we serve.

Case Manager Responsibilities:

The Case Manager works as a member of an integrated treatment team. Staff is responsible for providing rehabilitation, crisis services and support services to adult consumers identified with severe and persistent mental illness. Services provided to individuals in authorized level of care include pharmacological management services, and rehabilitation services. Nature of work requires frequent in-person, long-term contact with individuals, family members, and service providers. Job performance requires an automobile, extensive travel, and flexible hours to provide services. Job also requires staff to facilitate skills activities in a group or individual setting to clients served by Coastal Plains Community Center. Works under the supervision of the Clinic Director or designee. Job requires high level of clinical skills necessary for independent judgment.

MINIMUM QUALIFICATIONS:

A Bachelor's Degree from an accredited college or university with a major in Social or Behavioral Health which is defined as psychology, social work, medicine, nursing, rehabilitation, counseling, sociology, human growth and development, physician assistant, gerontology, special education, educational psychology, early childhood education, or early childhood intervention. Salary is commensurate with education and experience per Coastal Plains career ladder. Class C operator's license with evidence of a good driving record.

PREFERRED REQUIREMENTS:

- Knowledge of Microsoft office and basic computer skills as demonstrated by a performance exam.
- Able to communicate orally in Spanish.
- Master's Degree.
- One-year experience in adult MH case management/rehab skills training.
- Demonstrates knowledge of local support services available in San Patricio County.

BENEFIT PACKAGE:

- Free LPC-A supervision
- A fully funded health, dental, vision package and short-term disability
- \$10,000 employer sponsored life insurance
- Elective life up to 100k guaranteed issue at sign on
- Employer sponsored retirement plan 401(a) with 150% matching funds
- Elective retirement plan 403(b) option
- 10 paid holidays
- 144 hours of paid vacation
- Longevity pay
- Potential end of year merit

System Analysis I, II
Portland, TX
Monday – Friday 8-5
\$3,342.00 - \$3,788.00 Monthly
Posting: #2207
Until Filled



Coastal Plains Community Center is committed to providing a Trauma-informed environment for employees and the people we serve.

About our Organization: Coastal Plains is a certified community behavioral health center (CCBHC). The center provides behavioral health services, primary health services, and substance use services to children and adults. We offer employees a strong benefit package which includes the above posted salary. Our philosophy is to take care of our employees so they can take care of the people we serve.

System Analysis job responsibilities: The System Analysis position provides first level help desk support to Coastal Plains employees experiencing computer/network/data related problems with limited latitude for the use of initiative and independent judgement. This position assists in managing computer inventory, assists in development of training materials and conducting training classes, and assists in developing DA2 reports. This position requires good customer relations skills, moderately complex problem-solving skills and troubleshooting abilities. Maintains confidentially related to consumer and employee information. Reports to the Director of Authority Functions.

MINIMUM QUALIFICATIONS:

- For Systems Analyst I - Associates degree from an accredited college or university with a major in a field related to the position, plus (1) year of experience relevant to the duties to be performed.
- For Systems Analyst II – Bachelor’s degree in Computer Science from an accredited college or university with a major in a field related to the position, plus (1) year of experience relevant to the duties to be performed.

PREFERRED REQUIREMENTS:

- Excellent computer skills, specifically in Microsoft software (Word, Excel and PowerPoint)
- Experience with computer networks, Citrix/Terminal Servers
- Extensive experience in the management and use of spread sheets, charts and graphs
- Experience with generating management reports using SQL report generation.
- Knowledge of clinical and billing aspects of MHMR services
- Extensive experience with clinical software
- Ability to organize and prioritize a variety of assignments and to manage time effectively
- Ability to understand and apply complex regulatory guidelines and procedures
- Ability to present effective written and oral training sessions
- Ability to maintain class C operator’s license with a good driving record

BENEFIT PACKAGE:

- A fully funded health, dental, vision package and short-term disability
- \$10,000 employer sponsored life insurance
- Elective life up to 100k guaranteed issue at sign on
- Employer sponsored retirement plan 401(a) with 150% matching funds
- Elective retirement plan 403(b) option
- 10 paid holidays
- 144 hours of paid vacation
- Longevity pay
- Potential end of year merit

Care Coordinator III
Kingsville
Monday-Friday 8-5 (Flex)
\$3,143.00 – \$3,342.00 Monthly
Posting: #2220
Closes: Until filled



Coastal Plains Community Center is committed to providing a Trauma-informed environment for employees and the people we serve.

About our Organization:

Coastal Plains is a certified community behavioral health center (CCBHC). The center provides behavioral health services, primary health services, and substance use services to children and adults. We offer employees a strong benefit package which includes the above posted salary. Our philosophy is to take care of our employees so they can take care of the people we serve.

Care Coordinator Responsibilities:

Care Coordinators (CC) coordinate access to medical services and increase continuity of care by managing relationships with care providers, transitions-in-care, and following referrals to other allied health professional care for the physical health needs of CPCC consumers. Care coordinators coordinate, promote timely access to appropriate care, increase utilization of preventative care, reduce emergency room utilization and hospital readmissions, and increase health comprehension through culturally and linguistically appropriate education. Care coordination also requires closing the loop on referrals, exchanging records of services among providers, tracking transitions of care (admissions to and discharges from high levels of care), and active follow-up. Care Coordinators (CC) coordinate access to physical healthcare by arranging and tracking appointments, educating clients/families/LARs about health matters and coordinating services for other aspects of CPCC consumers' wellbeing. This position reports to the Kingsville Clinic Director. Other duties may be assigned at the discretion of the Clinic Director. Position offers excellent benefits including health insurance, excellent retirement package, paid time off and provide a family-friendly work site with a small-town feel. Come join our team!

MINIMUM QUALIFICATIONS:

A Bachelor's Degree from an accredited college or university with a major in Social, Behavioral, or Human Services

PREFERRED REQUIREMENTS:

- Minimum proficiency with computer software as demonstrated by knowledge of Microsoft Applications
- Bilingual English/Spanish
- Lives within service area
- Excellent verbal and written communication skills as demonstrated by oral and written interview
- Demonstrated ability to thrive in productivity driven environment
- Experience working with this target population
- Masters degree

BENEFIT PACKAGE:

- Free LPC-A supervision
- A fully funded health, dental, vision package and short-term disability
- \$10,000 employer sponsored life insurance
- Elective life up to 100k guaranteed issue at sign on
- Employer sponsored retirement plan 401(a) with 150% matching funds
- Elective retirement plan 403(b) option
- 10 paid holidays
- 144 hours of paid vacation
- Longevity pay
- Potential end of year merit

Intake LPHA
TBD
Monday-Friday 8-5 (Flex)
\$5,500.00 Monthly
Posting: #2232
Closes: Until filled



Coastal Plains Community Center is committed to providing a Trauma-informed environment for employees and the people we serve.

About our Organization:

Coastal Plains is a certified community behavioral health center (CCBHC). The center provides behavioral health services, primary health services, and substance use services to children and adults. We offer employees a strong benefit package which includes the above posted salary. Our philosophy is to take care of our employees so they can take care of the people we serve.

APPLICANT QUALIFICATIONS:

GENERAL DESCRIPTION:

This position is responsible for providing CBT, psychosocial assessments, diagnostic evaluations/reviews and will determine eligibility for individuals and families seeking mental health services from Coastal Plains Community Center. This position will provide virtual and face to face services to individuals in our nine county service area.

MINIMUM QUALIFICATIONS:

Must hold current license from the state of Texas in one of the following areas: a medical physician, Licensed Professional Counselor, LMSW-ACP, licensed psychologist, advanced practice nurse, Licensed Clinical Social Worker. Must have a current Texas Driver's license.

PREFERRED REQUIREMENTS:

1. Any practitioner certified by Academy of Cognitive Therapy, Beck Institute for CBT, or the Reach Institute to provide CBT in the state of Texas or be capable of obtaining CBT certification with assistance from the Center.
2. Practitioner has experience working in an outpatient setting.
3. Practitioner is familiar with entering information into an electronic medical record.

BENEFIT PACKAGE:

- Free LPC-A supervision
- A fully funded health, dental, vision package and short-term disability
- \$10,000 employer sponsored life insurance
- Elective life up to 100k guaranteed issue at sign on
- Employer sponsored retirement plan 401(a) with 150% matching funds
- Elective retirement plan 403(b) option
- 10 paid holidays
- 144 hours of paid vacation
- Longevity pay
- Potential end of year merit

Case Manager III (IDD)
Portland
Monday-Friday 8-5 (Flex)
\$3143- \$3342 monthly
Posting: #2234
Closes: Until filled



Coastal Plains Community Center is committed to providing a Trauma-informed environment for employees and the people we serve.

About our Organization:

Coastal Plains is a certified community behavioral health center (CCBHC). The center provides behavioral health services, primary health services, and substance use services to children and adults. We offer employees a strong benefit package which includes the above posted salary. Our philosophy is to take care of our employees so they can take care of the people we serve

APPLICANT QUALIFICATIONS:

GENERAL DESCRIPTION:

Provides ongoing case management services for more than 30 persons with IDD and other related conditions. Performs single function case management services to assist assigned individuals in gaining access to medical, social educational and other needed services. Performs the case management duties according to the Service Coordination GR, CFC and Waiver standards. The nature of the work requires aggressive interventions and frequent in person long term contact with the individual's families and service providers. The job requires extensive travel for community-based service provision and flexible hours and schedule. Participates in 24 hour on call system. This position reports to the CFC Supervisor.

MINIMUM QUALIFICATIONS:

Bachelor's degree from an accredited college or university with a major in a Social, Behavioral Health or Human Services which is defined as psychology, social work, medicine, nursing, rehabilitation, counseling, sociology, human growth and development, gerontology, educational psychology, education, and criminal justice. Salary is commensurate with education and experience per Coastal Plains career ladder. Must maintain class "C" drivers license with evidence of a good driving record.

PREFERRED REQUIREMENTS:

- 1.) Case Management or Social Work experience
- 2.) Ability to communicate in Spanish
- 3.) Knowledge of computer programs
- 4.) Good organizational skills

BENEFIT PACKAGE:

- Free LPC-A supervision
- A fully funded health, dental, vision package and short-term disability
- \$10,000 employer sponsored life insurance
- Elective life up to 100k guaranteed issue at sign on
- Employer sponsored retirement plan 401(a) with 150% matching funds
- Elective retirement plan 403(b) option
- 11 paid holidays
- 144 hours of paid vacation
- Longevity pay
- Potential end of the year merit

Rehab Caseworker III (Adult)
Alice, TX
Monday-Friday 8-5
\$3,143.00 – \$3,342.00 Monthly
Posting: #2243
Closes: Until Filled



Coastal Plains Community Center is committed to providing a Trauma-informed environment for employees and the people we serve.

About our Organization:

Coastal Plains is a certified community behavioral health center (CCBHC). The center provides behavioral health services, primary health services, and substance use services to children and adults. We offer employees a strong benefit package which includes the above posted salary. Our philosophy is to take care of our employees so they can take care of the people we serve.

Rehab Caseworker responsibilities:

Works as a member of an integrated treatment team. Staff is responsible for providing rehabilitation and support services, to consumers identified with severe and persistent mental illness. Services provided to adult individuals in authorized service package include Pharmacological management services, and rehabilitation services. Nature of work requires frequent in-person, long-term contact with individuals, family members, and service providers. Job performance requires an automobile, extensive travel, and flexible hours to provide services. Job also requires staff to facilitate skills activities in a group or individual setting to clients served by Coastal Plains Community Center. Works under the supervision of the Clinic Director or designee. Job requires high level of clinical skills necessary for independent judgment.

MINIMUM QUALIFICATIONS:

A Bachelor's Degree from an accredited college or university with a major in social, behavioral health, or human services. Salary is commensurate with education and experience per Coastal Plains career ladder. Must have a Class "C" driver's license with evidence of a good driving record. Reliable transportation a must.

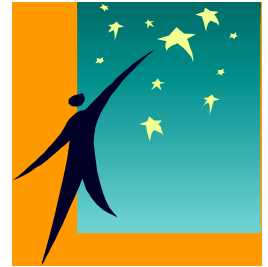
PREFERRED REQUIREMENTS:

- Knowledge of needs and characteristics associated with the target population.
- Proficient computer skills to perform job functions
- Ability to communicate both orally and in writing
- Knowledge of local community resources and how to access those resources
- Ability to demonstrate knowledge on the importance of productivity, time management, and organizational skills.
- Master's Degree in social, behavioral health, or human services
- Live within a 30-minute commute from the Alice clinic

BENEFIT PACKAGE:

- Free LPC-A supervision
- A fully funded health, dental, vision package and short-term disability
- \$10,000 employer sponsored life insurance
- Elective life up to 100k guaranteed issue at sign on
- Employer sponsored retirement plan 401(a) with 150% matching funds
- Elective retirement plan 403(b) option
- 10 paid holidays
- 144 hours of paid vacation
- Longevity pay
- Potential end of year merit

**Case Manager III Adult IDD
Portland
Monday-Friday 8-5
\$3,143 – 3,342 Monthly
Posting: #2245
Closes: Until Filled**



Coastal Plains Community Center is committed to providing a Trauma-informed environment for employees and the people we serve.

About our Organization:

Coastal Plains is a certified community behavioral health center (CCBHC). The center provides behavioral health services, primary health services, and substance use services to children and adults. We offer employees a strong benefit package which includes the above posted salary. Our philosophy is to take care of our employees so they can take care of the people we serve.

Case Manager III IDD PASRR Service Coordinator Responsibilities:

Position is based in Portland, TX at the CPCC Administrative headquarters. The PASRR Service Coordinator (PSC) is responsible for completing the PASRR Evaluation (PE) to make a determination of alternative placement and/or specialized services for persons residing in nursing home facilities. This position is responsible for coordinating alternate placement and providing ongoing service coordination to nursing home residents who qualify. Travel throughout a nine-county area is mandatory. This position reports to the Supervisor of PASRR IDD Services.

MINIMUM QUALIFICATIONS:

Must have a Bachelor's Degree in the human services field, including but not limited to sociology, special education, rehabilitation counseling, or psychology, plus one (1) year of experience working directly with person with Intellectual and Development Disabilities (IDD).

PREFERRED REQUIREMENTS:

- Ability to communicate in Spanish
- Knowledge of computer programs
- Good organizational skills

BENEFIT PACKAGE:

- A fully funded health, dental, vision package and short-term disability
- \$10,000 employer sponsored life insurance
- Elective life up to 100k guaranteed issue at sign on
- Employer sponsored retirement plan 401(a) with 150% matching funds
- Elective retirement plan 403(b) option
- 10 paid holidays
- 144 hours of paid vacation
- Longevity pay
- Potential year end merit

Licensed Vocational Nurse (LVN II)

TBD

Monday-Friday 8-5

\$3,200.00 Monthly

Posting: #2247

Closes: Until filled



Coastal Plains Community Center is committed to providing a Trauma-informed environment for employees and the people we serve.

About our Organization:

Coastal Plains is a certified community behavioral health center (CCBHC). The center provides behavioral health services, primary health services, and substance use services to children and adults. We offer employees a strong benefit package which includes the above posted salary. Our philosophy is to take care of our employees so they can take care of the people we serve.

Primary Care LVN II responsibilities:

The position of Licensed Vocation Nurse, Mental Health Services, is designed to ensure the effective and efficient delivery of nursing services to the Center's Primary Care program. This position is a great opportunity for individuals looking for a career in integrated Primary healthcare. LVN's coordinate and assist with primary care clinics twice a month at each location; coordinates medication services and assessments to consumers to include medication education. Center vehicles are available for travel from site to site. Mileage reimbursement is also offered as an option. The LVN reports to the Center's Primary Care Nurse Practitioner.

MINIMUM QUALIFICATIONS:

Graduate from accredited school of nursing. LVN holds current unrestricted license as a licensed vocational nurse in the State of Texas. Ability to maintain Class C driver's license with less than 10 penalty points.

PREFERRED REQUIREMENTS:

- Knowledge working with Office, Outlook and Excel
- Ability to speak Spanish
- Experience working with a diverse team
- Experience working with individual in a primary care setting
-

BENEFIT PACKAGE:

- Free LPC-A supervision
- A fully funded health, dental, vision package and short-term disability
- \$10,000 employer sponsored life insurance
- Elective life up to 100k guaranteed issue at sign on
- Employer sponsored retirement plan 401(a) with 150% matching funds
- Elective retirement plan 403(b) option
- 10 paid holidays
- 144 hours of paid vacation
- Longevity pay
- Potential year end merit

Case Manager III
Kingsville
Monday-Friday 8-5 (Flex)
\$3,143.00 - \$3,342.00 Monthly
Posting: #2248
Closes: Until filled



Coastal Plains Community Center is committed to providing a Trauma-informed environment for employees and the people we serve.

About our Organization:

Coastal Plains is a certified community behavioral health center (CCBHC). The center provides behavioral health services, primary health services, and substance use services to children and adults. We offer employees a strong benefit package which includes the above posted salary. Our philosophy is to take care of our employees so they can take care of the people we serve.

Case Manager Responsibilities:

Works as a member of an integrated treatment team. Staff is responsible for providing rehabilitation, crisis services and support services to adult consumers identified with severe and persistent mental illness. Services provided to individuals in authorized level of care include pharmacological management services, and rehabilitation services. Nature of work requires frequent in-person, long-term contact with individuals, family members, and service providers. Job performance requires an automobile, extensive travel, and flexible hours to provide services. Job also requires staff to facilitate skills activities in a group or individual setting to clients served by Coastal Plains Community Center. Works under the supervision of the Clinic Director or designee. Job requires high level of clinical skills necessary for independent judgment.

MINIMUM QUALIFICATIONS:

A Bachelor's Degree from an accredited college or university with a major in Social or Behavioral Health which is defined as psychology, social work, medicine, nursing, rehabilitation, counseling, sociology, human growth and development, physician assistant, gerontology, special education, educational psychology, early childhood education, or early childhood intervention. Salary is commensurate with education and experience per Coastal Plains career ladder. Class C operator's license with evidence of a good driving record. **Candidate must demonstrate at least 3 years history of stable employment.**

PREFERRED REQUIREMENTS:

- Knowledge of Microsoft office and basic computer skills as demonstrated by a performance exam.
- Able to communicate orally in Spanish.
- Master's Degree.
- One-year experience in adult MH case management/rehab skills training.
- Demonstrates knowledge of local support services available in San Patricio County.

BENEFIT PACKAGE:

- Free LPC-A supervision
- A fully funded health, dental, vision package and short-term disability
- \$10,000 employer sponsored life insurance
- Elective life up to 100k guaranteed issue at sign on
- Employer sponsored retirement plan 401(a) with 150% matching funds
- Elective retirement plan 403(b) option
- 10 paid holidays
- 144 hours of paid vacation
- Longevity pay
- Potential end of year merit

Case Manager III
Kingsville, TX
Monday-Friday 8-5 (Flex)
\$3,143.00 - \$3,342.00 Monthly
Posting: #2249
Closes: Until filled



Coastal Plains Community Center is committed to providing a Trauma-informed environment for employees and the people we serve.

About our Organization:

Coastal Plains is a certified community behavioral health center (CCBHC). The center provides behavioral health services, primary health services, and substance use services to children and adults. We offer employees a strong benefit package which includes the above posted salary. Our philosophy is to take care of our employees so they can take care of the people we serve.

Case Manager Responsibilities:

This position will provide crisis care services to the Kingsville clinic and will service Kleberg County. Other duties include screenings, post hospital follow-ups, crisis follow-ups, and maintain contact with psychiatric facilities. This position will also maintain a small caseload. Crisis worker will provide aggressive interventions and frequent in-person contact with individuals and their families, by providing on-going Rehabilitative and Case Management services for adults and children with a mental health diagnosis. Case Management services consists of gaining access to medical, social, educational and other unmet needs. Provides Rehabilitative services that focus on positive outcomes with reduction in symptoms increase in level of functioning and maximum mental health improvements. Work is community and site based. Schedule will be flexible. This position reports to the Crisis Intervention Team Program Director.

MINIMUM QUALIFICATIONS:

A Bachelor's Degree from an accredited college or university with a major in Social or Behavioral Health which is defined as psychology, social work, medicine, nursing, rehabilitation, counseling, sociology, human growth and development, physician assistant, gerontology, special education, educational psychology, early childhood education, or early childhood intervention. Class C operator's license with evidence of a good driving record.

PREFERRED REQUIREMENTS:

- Minimum proficiency with computer software as demonstrated by knowledge of Microsoft Applications.
- Lives within the service area (Kleberg County).
- Excellent verbal and written communication skills as demonstrated by oral and written interview.
- Is able to communicate in Spanish
- Experience working with this target population (adults and children) who are experiencing crisis situations.

BENEFIT PACKAGE:

- Free LPC-A supervision
- A fully funded health, dental, vision package and short-term disability
- \$10,000 employer sponsored life insurance
- Elective life up to 100k guaranteed issue at sign on
- Employer sponsored retirement plan 401(a) with 150% matching funds
- Elective retirement plan 403(b) option
- 10 paid holidays
- 144 hours of paid vacation
- Longevity pay
- Potential end of year merit

Case Manager III
Alice, TX
Monday-Friday 8-5
\$3,143.00 – \$3,342.00 Monthly
Posting: #2250
Closes: Until Filled



Coastal Plains Community Center is committed to providing a Trauma-informed environment for employees and the people we serve.

About our Organization:

Coastal Plains is a certified community behavioral health center (CCBHC). The center provides behavioral health services, primary health services, and substance use services to children and adults. We offer employees a strong benefit package which includes the above posted salary. Our philosophy is to take care of our employees so they can take care of the people we serve.

Case Manager III Responsibilities:

Works as a member of an integrated treatment team. Staff is responsible for providing rehabilitation and support services, to consumers identified with severe and persistent mental illness. Services provided to adult individuals in authorized service package include Pharmacological management services, and rehabilitation services. Nature of work requires frequent in-person, long-term contact with individuals, family members, and service providers. Job performance requires an automobile, extensive travel, and flexible hours to provide services. Job also requires staff to facilitate skills activities in a group or individual setting to clients served by Coastal Plains Community Center. Works under the supervision of the Clinic Director or designee. Job requires high level of clinical skills necessary for independent judgment.

MINIMUM QUALIFICATIONS:

A Bachelor's Degree from an accredited college or university with a major in social, behavioral health, or human services. Salary is commensurate with education and experience per Coastal Plains career ladder. Must have a Class "C" driver's license with evidence of a good driving record. Reliable transportation a must.

PREFERRED REQUIREMENTS:

- Knowledge of Microsoft office and basic computer skills
- Able to communicate orally in Spanish
- One year (1) experience in Mental Health case management/rehab skills training
- Live within a 30-minute commute from the Alice clinic
- Master's Degree in social, behavioral health, or human services
-

BENEFIT PACKAGE:

- Free LPC-A supervision
- A fully funded health, dental, vision package and short-term disability
- \$10,000 employer sponsored life insurance
- Elective life up to 100k guaranteed issue at sign on
- Employer sponsored retirement plan 401(a) with 150% matching funds
- Elective retirement plan 403(b) option
- 10 paid holidays
- 144 hours of paid vacation
- Longevity pay
- Potential end of year merit

Rehab Caseworker III (Adult)
Alice, TX
Monday-Friday 8-5
\$3,143.00 – \$3,342.00 Monthly
Posting: #2251
Closes: Until Filled



Coastal Plains Community Center is committed to providing a Trauma-informed environment for employees and the people we serve.

About our Organization:

Coastal Plains is a certified community behavioral health center (CCBHC). The center provides behavioral health services, primary health services, and substance use services to children and adults. We offer employees a strong benefit package which includes the above posted salary. Our philosophy is to take care of our employees so they can take care of the people we serve.

Rehab Caseworker responsibilities:

Works as a member of an integrated treatment team. Staff is responsible for providing rehabilitation and support services, to consumers identified with severe and persistent mental illness. Services provided to adult individuals in authorized service package include Pharmacological management services, and rehabilitation services. Nature of work requires frequent in-person, long-term contact with individuals, family members, and service providers. Job performance requires an automobile, extensive travel, and flexible hours to provide services. Job also requires staff to facilitate skills activities in a group or individual setting to clients served by Coastal Plains Community Center. Works under the supervision of the Clinic Director or designee. Job requires high level of clinical skills necessary for independent judgment.

MINIMUM QUALIFICATIONS:

A Bachelor's Degree from an accredited college or university with a major in social, behavioral health, or human services. Salary is commensurate with education and experience per Coastal Plains career ladder. Must have a Class "C" driver's license with evidence of a good driving record. Reliable transportation a must.

PREFERRED REQUIREMENTS:

- Knowledge of the needs and characteristics associated with the target population
- Proficient computer skills to perform job functions
- Ability community effectively orally and in writing
- Knowledge of local community resources and how to access those services
- Ability to establish a therapeutic relationship with consumers and their support system and to set and maintain boundaries

BENEFIT PACKAGE:

- Free LPC-A supervision
- A fully funded health, dental, vision package and short-term disability
- \$10,000 employer sponsored life insurance
- Elective life up to 100k guaranteed issue at sign on
- Employer sponsored retirement plan 401(a) with 150% matching funds
- Elective retirement plan 403(b) option
- 10 paid holidays
- 144 hours of paid vacation
- Longevity pay
- Potential end of year merit

Rehab Caseworker III (Adult)
Rockport, TX
Monday-Friday 8-5
\$3,143.00 – \$3,342.00 Monthly
Posting: #2252
Closes: Until Filled



Coastal Plains Community Center is committed to providing a Trauma-informed environment for employees and the people we serve.

About our Organization:

Coastal Plains is a certified community behavioral health center (CCBHC). The center provides behavioral health services, primary health services, and substance use services to children and adults. We offer employees a strong benefit package which includes the above posted salary. Our philosophy is to take care of our employees so they can take care of the people we serve.

Rehab Caseworker responsibilities:

Works as a member of an integrated treatment team. Staff is responsible for providing rehabilitation and support services, to consumers identified with severe and persistent mental illness. Services provided to adult individuals in authorized service package include Pharmacological management services, and rehabilitation services. Nature of work requires frequent in-person, long-term contact with individuals, family members, and service providers. Job performance requires an automobile, extensive travel, and flexible hours to provide services. Job also requires staff to facilitate skills activities in a group or individual setting to clients served by Coastal Plains Community Center. Works under the supervision of the Clinic Director or designee. Job requires high level of clinical skills necessary for independent judgment.

MINIMUM QUALIFICATIONS:

A Bachelor's Degree from an accredited college or university that allows for QMHP-CS/QIDD credentialing. Salary is commensurate with education and experience per Coastal Plains career ladder. Must have a Class "C" driver's license with evidence of a good driving record. Reliable transportation a must.

PREFERRED REQUIREMENTS:

- Knowledge of Microsoft office and basic computer skills
- Able to communicate orally in Spanish
- One year (1) experience in Mental Health case management/rehab skills training
- Live within a 30-minute commute from the Alice clinic
- Master's Degree in social, behavioral health, or human services
-

BENEFIT PACKAGE:

- Free LPC-A supervision
- A fully funded health, dental, vision package and short-term disability
- \$10,000 employer sponsored life insurance
- Elective life up to 100k guaranteed issue at sign on
- Employer sponsored retirement plan 401(a) with 150% matching funds
- Elective retirement plan 403(b) option
- 10 paid holidays
- 144 hours of paid vacation
- Longevity pay
- Potential end of year merit

Clinic Director/Program Admin III
Beeville, TX
Monday-Friday 8-5
\$5,006.00 Monthly
Posting: #2253
Closes: Until Filled



Coastal Plains Community Center is committed to providing a Trauma-informed environment for employees and the people we serve.

About our Organization:

Coastal Plains is a certified community behavioral health center (CCBHC). The center provides behavioral health services, primary health services, and substance use services to children and adults. We offer employees a strong benefit package which includes the above posted salary. Our philosophy is to take care of our employees so they can take care of the people we serve.

Clinic Director Responsibilities:

The Clinic Director reports to and works under the guidance and supervision of the Adult Mental Health Services Director. Responsibilities include program development, implementation, monitoring, budgeting, and evaluation of the provision of direct services for the chronically and severely mentally ill of Bee and Live Oak counties. Will carry out (1) local management and administrative activities; (2) supervise and coordinate staff to include monitoring of worker productivity and documentation; (3) delivery of direct services as dictated by consumers' benefit package in TRR and Center targets (minimum); and (4) be involved in community education and interagency coordination (5) monitors the Center's Supported Housing Rental Assistance (SHRA) program. The clinic director must exercise significant latitude for independent judgement and decision making.

MINIMUM QUALIFICATIONS:

Any combination of education and experience equivalent to a Bachelor's degree from an accredited college or university with a major appropriate to the requirements of the position, plus four (4) years of experience in a responsible administrative or managerial position in the administration of a program related to the duties of the position.

PREFERRED REQUIREMENTS:

- Demonstrates knowledge of available services in the Beeville and Live Oak counties for clients served.
- A Master's Degree
- Knowledge of Microsoft office, excel, and computer skills as demonstrated by performance exam.
- Experience with managing outpatient programs.

BENEFIT PACKAGE:

- Free LPC-A supervision
- A fully funded health, dental, vision package and short-term disability
- \$10,000 employer sponsored life insurance
- Elective life up to 100k guaranteed issue at sign on
- Employer sponsored retirement plan 401(a) with 150% matching funds
- Elective retirement plan 403(b) option
- 10 paid holidays
- 144 hours of paid vacation
- Longevity pay
- Potential end of year merit

Psychiatric Nurse Practitioner
Location TBD
Monday-Friday 8-5
\$10,500 Monthly
Posting: #2254
Closes: Until Filled



Coastal Plains Community Center is committed to providing a Trauma-informed environment for employees and the people we serve.

About our Organization:

Coastal Plains is a certified community behavioral health center (CCBHC). The center provides behavioral health services, primary health services, and substance use services to children and adults. We offer employees a strong benefit package which includes the above posted salary. Our philosophy is to take care of our employees so they can take care of the people we serve.

Psychiatric Nurse Practitioner Responsibilities:

This position is responsible for handling patient appointments and performing routine examinations to ensure patient psychiatric health. The duties involve speaking with patients re: their symptoms, completing initial diagnostic evaluations, and follow-ups. This position will prescribe medications and assist with educating patients on prescribed medications and injections. The nurse practitioner would also be coordinating with other healthcare professionals to ensure referrals are being made when appropriate. This position will work closely with the Director of Nursing and the Center's Medical Director to assist with daily clinic operations. Will assist the DON with development of medical policies and procedures. This position will perform health care procedures and monitor health conditions of individuals opened to care with the Center. This position will report to the Center's CEO and work clinically under the Center's Medical Director.

MINIMUM QUALIFICATIONS:

A master's degree in the field of Nursing plus five (5) year experience related to the duties to be performed. Applicant must also be Board Certified as a Nurse Practitioner in the state of Texas.

PREFERRED REQUIREMENTS:

- Experience with providing medical services in a LMHA outpatient setting
- Experience in providing training to licensed medical staff
- Experience in behavioral health case management services
- Board Certified Psychiatric Mental Health Nurse Practitioner (PMHNP)

BENEFIT PACKAGE:

- A fully funded health, dental, vision package and short-term disability
- \$10,000 employer sponsored life insurance
- Elective life up to 100k guaranteed issue at sign on
- Employer sponsored retirement plan 401(a) with 150% matching funds
- Elective retirement plan 403(b) option
- 10 paid holidays
- 144 hours of paid vacation
- Longevity pay
- Potential end of year merit

Rehab Caseworker II & III

Location: Rockport

Monday-Friday 8-5

\$3,143.00 - \$3,342.00 Monthly

Posting: #2255

Closes: Until Filled



Coastal Plains Community Center is committed to providing a Trauma-informed environment for employees and the people we serve.

About our Organization:

Coastal Plains is a certified community behavioral health center (CCBHC). The center provides behavioral health services, primary health services, and substance use services to children and adults. We offer employees a strong benefit package which includes the above posted salary. Our philosophy is to take care of our employees so they can take care of the people we serve.

Rehab Caseworker II&III Responsibilities:

Works with the Center's Youth and Adolescent program to help clients improve mental health symptoms by providing Case Management, Rehabilitative Skills Training and Support Services. Works closely with other youth team members and community partners. Nature of work involves virtual care, and in-person contact with individuals and their caretaker at the office, school and/or home location. Job requires some clinical skills necessary for independent judgement. Job requires an automobile, and flexible hours to provide services. Works under the supervision of the Youth and Family program manager or designee.

MINIMUM QUALIFICATIONS:

Bachelor's degree from an accredited college or university with a major in social, behavioral, health, or human services. Salary is commensurate with education and experience per Coastal Plains' career ladder.

PREFERRED REQUIREMENTS:

- Knowledge of Microsoft office and basic computer skills
- Able to speak Spanish
- One year (1) experience in MH Case Management/Rehab skills training
- One year (1) experience working with youth, adolescents and families
- Maintain class "C" license with less than 10 penalty points
- Master's degree in major of social, behavioral health or human services

BENEFIT PACKAGE:

- A fully funded health, dental, vision package and short-term disability
- \$10,000 employer sponsored life insurance
- Elective life up to 100k guaranteed issue at sign on
- Employer sponsored retirement plan 401(a) with 150% matching funds
- Elective retirement plan 403(b) option
- 10 paid holidays
- 144 hours of paid vacation
- Longevity pay
- Potential end of year merit

Human Services Tech II, III, IV
Kingsville, GH
Monday-Friday 8-5
\$1,869.00-2,081.00 Monthly
Posting: #2256
Closes: Until Filled



Coastal Plains Community Center is committed to providing a Trauma-informed environment for employees and the people we serve.

About our Organization:

Coastal Plains is a certified community behavioral health center (CCBHC). The center provides behavioral health services, primary health services, and substance use services to children and adults. We offer employees a strong benefit package which includes the above posted salary. Our philosophy is to take care of our employees so they can take care of the people we serve.

Human Services Tech II, III, IV Responsibilities:

This position is primarily responsible for assisting cognitively challenged individuals in a group home setting. This position provides direct care, supervision and training. Duties include transporting individuals, self-help or independent living skills training, documentation, maintenance of home, medical appointment and assisting with their finances. This position reports to the Director of Waiver Services.

MINIMUM QUALIFICATIONS:

- High School Diploma or GED Certificate
- A valid class "C" Texas Driver's license, with a good driving record

PREFERRED REQUIREMENTS:

- Work history demonstrating an ability to work under minimal supervision
- Stable work record demonstrated by longevity with previous employer. (Two years or longer)
- Local residency within 20 minutes commute of duty station
- Previous experience working with persons with cognitive disabilities

BENEFIT PACKAGE:

- Pay enhancement for CMA or CNA certification
- Career ladder for guaranteed upward mobility
- A fully funded health, dental, vision package and short-term disability
- \$10,000 employer sponsored life insurance
- Elective life up to 100k guaranteed issue at sign on
- Employer sponsored retirement plan 401(a) with 150% matching funds
- Elective retirement plan 403(b) option
- 10 paid holidays
- 144 hours of paid vacation
- Longevity pay
- Potential year end merit

Licensed Vocational Nurse (LVN II)

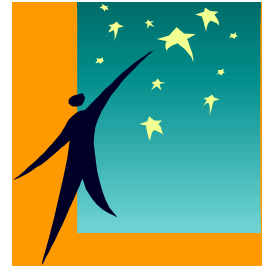
TBD

Monday-Friday 8-5

\$2783.00 Monthly

Posting: #2257

Closes: Until filled



Coastal Plains Community Center is committed to providing a Trauma-informed environment for employees and the people we serve.

About our Organization:

Coastal Plains is a certified community behavioral health center (CCBHC). The center provides behavioral health services, primary health services, and substance use services to children and adults. We offer employees a strong benefit package which includes the above posted salary. Our philosophy is to take care of our employees so they can take care of the people we serve.

LVN II Responsibilities:

The position of Licensed Vocation Nurse, is designed to ensure the effective and efficient delivery of nursing services to IDD consumers of Coastal Plains Community Center. The LVN is responsible for providing nursing care and treatment, and monitoring and assisting individuals in all areas of health. The LVN participates as a member of the interdisciplinary team, complies with HCS health related principles, including training and education of staff and consumers. Also responsible for on-call phone consults from group homes on nights and weekends. This position reports directly to the Director of Nursing for IDD services.

MINIMUM QUALIFICATIONS:

Current and valid license to practice as an LVN in the State of Texas.

Current and valid Texas type C driver's license.

One year of experience or related experience as an LVN in Behavioral Health

PREFERRED REQUIREMENTS:

- Knowledge of nursing standards both state and HCS.
- Ability to perform focused nursing assessments.
- Ability to provide teaching and over site to non-license paid staff who provide delegated nursing care to consumers.
- Ability to clearly communicate to both staff and consumers.
- Ability to utilize computer based database for documentation.

BENEFIT PACKAGE:

- Free LPC-A supervision
- A fully funded health, dental, vision package and short-term disability
- \$10,000 employer sponsored life insurance
- Elective life up to 100k guaranteed issue at sign on
- Employer sponsored retirement plan 401(a) with 150% matching funds
- Elective retirement plan 403(b) option
- 10 paid holidays
- 144 hours of paid vacation
- Longevity pay
- Potential year end merit

**Data Entry Clerk
Portland
Monday-Friday 8-5
\$2,206.00 Monthly
Posting: #2258
Closes: Until filled**



Coastal Plains Community Center is committed to providing a Trauma-informed environment for employees and the people we serve.

About our Organization:

Coastal Plains is a certified community behavioral health center (CCBHC). The center provides behavioral health services, primary health services, and substance use services to children and adults. We offer employees a strong benefit package which includes the above posted salary. Our philosophy is to take care of our employees so they can take care of the people we serve.

Data Entry Clerk Responsibilities:

- Compiling, sorting, and verifying accuracy of data to be entered (service logs, financial assessments, insurance information). Obtaining further information for incomplete/erroneous documentation.
- Entering service and claims data from source documents into medical record and billing systems.
- Researching and entering insurance information.
- EVV service comparison and reporting.
- Comparing data entered with source documents to detect errors. Making corrections as needed.
- Keeping record of work completed.

MINIMUM QUALIFICATIONS:

Any combination of education and experience equivalent to high school graduation or FED, plus six (6) months experience in ADP record control work (date entry).

PREFERRED REQUIREMENTS:

- Knowledge of methods and machines used in data entry/processing.
- Ability to learn, understand and apply increasingly complex operational procedures and perform detail work rapidly and accurately.
- Knowledge of basic mathematical computations.
- Ability to plan/organize workload to comply with established deadlines.
- Ability to communicate effectively orally and in writing.
- Good time management skills.
- Ability to maintain a Class C license with less than ten (10) penalty points.
- Familiarization with Texas Medicaid and/or private insurance.
- Knowledge of HCs, Texas Home Living, Card, Mental Health Rehabilitation and Case Management service provision.

BENEFIT PACKAGE:

- Free LPC-A supervision
- A fully funded health, dental, vision package and short-term disability
- \$10,000 employer sponsored life insurance
- Elective life up to 100k guaranteed issue at sign on
- Employer sponsored retirement plan 401(a) with 150% matching funds
- Elective retirement plan 403(b) option
- 10 paid holidays
- 144 hours of paid vacation
- Longevity pay
- Potential year end merit

YES Wraparound Facilitator Case Manager
Kingsville
Monday-Friday 8-5
\$3,143.00 - \$3,342.00 Monthly
Posting: #2259
Closes: Until filled



Coastal Plains Community Center is committed to providing a Trauma-informed environment for employees and the people we serve.

About our Organization:

Coastal Plains is a certified community behavioral health center (CCBHC). The center provides behavioral health services, primary health services, and substance use services to children and adults. We offer employees a strong benefit package which includes the above posted salary. Our philosophy is to take care of our employees so they can take care of the people we serve.

YES Wraparound Facilitator Case Manager Responsibilities:

Performs care coordination with children and their families; gathering behavior, psychological social and developmental information to coordinates and monitors service delivery according to Wraparound Plan. Position will lead the integrated child family team meetings to discover the child and family strengths and identified needs to develop treatment Goals, Objectives and Interventions to reduce identified risk factors. The Wraparound Facilitator will make necessary referrals based on the discovered needs and provide follow up. Nature of work requires frequent contact with individuals, family members, and service providers. Caseload size 1 to 10 ratio. Job performance requires an automobile and flexible hours to provide services. Works under the supervision of the YES Program Manager or designee.

MINIMUM QUALIFICATIONS:

Bachelor's degree from an accredited college or university with a major in social, behavioral health, or human services. Salary is commensurate with education and experience.

PREFERRED REQUIREMENTS:

1. Knowledge of child and adolescent mental illness
2. Knowledge of basic casework principles and general community resources.
3. Job requires high level of clinical skill necessary for independent judgement.
4. Knowledge in engagement
5. Ability to communicate effectively
6. Knowledge of casework documentation requirements
7. Knowledge and understanding of program guidelines, policies and procedures and ability to carry out responsibilities
8. Current class C operator's license with a good driving record as evidenced by driver's license check.
9. Work history, which demonstrates an ability to work under minimal supervision.
10. Ability to communicate in Spanish

BENEFIT PACKAGE:

- Free LPC-A supervision
- A fully funded health, dental, vision package and short-term disability
- \$10,000 employer sponsored life insurance
- Elective life up to 100k guaranteed issue at sign on
- Employer sponsored retirement plan 401(a) with 150% matching funds
- Elective retirement plan 403(b) option
- 10 paid holidays
- 144 hours of paid vacation
- Longevity pay
- Potential year end merit

Early Onset Clinical Supervisor
Aransas Pass, TX
Monday-Friday 8-5
\$5,650.00 Monthly
Posting: #2260
Closes: Until Filled



Coastal Plains Community Center is committed to providing a Trauma-informed environment for employees and the people we serve.

About our Organization:

Coastal Plains is a certified community behavioral health center (CCBHC). The center provides behavioral health services, primary health services, and substance use services to children and adults. We offer employees a strong benefit package which includes the above posted salary. Our philosophy is to take care of our employees so they can take care of the people we serve.

Early Onset Clinical Supervisor Responsibilities:

The Early Onset (EO) Clinical Supervisor reports to and works under the guidance and supervision of the Aransas Pass/Rockport Clinic Director. Responsibilities include program development, implementation, monitoring Center's EO program and evaluation of the provision of direct services for Early Onset program to ensure compliance. The EO Clinical Supervisor will carry out (1) local management and administrative activities; (2) supervision and coordination of EO staff to include monitoring of worker productivity and documentation; (3) delivery of direct services as dictated by consumer's benefit package in Texas Resilience and Recovery (TRR) assessment (4) and be involved in community education and interagency coordination. The EO Clinical Supervisor will also assist the Clinic Director in other administrative duties to ensure clinic operations run smoothly as possible. The EO Clinical Supervisor must exercise significant latitude for independent judgment and decision-making.

MINIMUM QUALIFICATIONS:

Must hold current license from the state of Texas in one of the following areas: a medical physician, Licensed Professional Counselor, LMSW-ACP, licensed psychologist, advanced practice nurse, Licensed Clinical Social Worker. Must have a current Texas driver's license.

PREFERRED REQUIREMENTS:

- Any practitioner certified by Academy of Cognitive Therapy, Beck Institute for CBT, or the Reach Institute to provide CBT in the state of Texas or be capable of obtaining CBT certification with assistance from the Center.
- Demonstrates knowledge of available services in CPCC's Service area.
- Knowledge of Microsoft office, excel, and computer skills as demonstrated by performance exam.
- Experience with managing outpatient programs.
- Lives 30 Minutes within service area.

BENEFIT PACKAGE:

- Free LPC-A supervision
- A fully funded health, dental, vision package and short-term disability
- \$10,000 employer sponsored life insurance
- Elective life up to 100k guaranteed issue at sign on
- Employer sponsored retirement plan 401(a) with 150% matching funds
- Elective retirement plan 403(b) option
- 10 paid holidays
- 144 hours of paid vacation
- Longevity pay
- Potential end of year merit