



# Coastal Plains Integrated Health

200 Marriot Drive  
P.O. Box 1336  
Portland, Texas 78374  
[www.coastalplainsctr.org](http://www.coastalplainsctr.org)

Bulletin 1144

November 7, 2023 – November 13, 2023

**Applications Accepted via our website [www.coastalplainsctr.org](http://www.coastalplainsctr.org). *If the position has a closing date, the Applications must be received by closing date to be eligible for consideration.* Resumes are **NOT ACCEPTED** in lieu of an application. **We will not accept faxed applications.****

***We are an Equal Opportunity/ADA/Affirmative Action Employer***

## **Requirements:**

Every person hired at Coastal Plains Integrated Health is considered an employee of the Center regardless of who made the offer of employment. Employment assignments may change due to budgetary, disciplinary, or administrative reasons. All changes in employment assignments will be handled in accordance with laws prohibiting any form of discrimination. All positions require the ability to work flexible hours and days as needed.

Positions requiring specific academic achievement and/or specific course attainment will require you to attach a copy of a transcript, certification and/or License to your application. All other positions will require verification of high school diploma or GED.

As per the Immigration Reform and Control Act of 1986 (§1200) all applicants for employment are required to provide documents that provide proof of employment authorization and identity. (Social Security Card, Driver's License, and (or) alternate documents as per regulations).

Criminal convictions involving personal injury, threat to another person, drug related offenses, etc., may make you ineligible for employment at Coastal Plains Integrated Health. Names of prospective employees are cleared through the Texas Department of Public Safety to determine the existence of such records. Falsification of the application for employment is grounds for dismissal, if employed.

For positions that require travel/driving, applicants must maintain a class "C" driver's license with a favorable driving record as evidenced by DPS Moving Violation report.

Coastal Plains Integrated Health is a DRUG FREE WORKPLACE. Effective August 1, 1996, before employment, all applicants are given a "conditional" offer of employment and will be required to take and pass a drug test. Physical assessment tests will be required for certain positions.

Effective July 1, 2002, all applicants for employment will be notified that prior to an offer of employment, they will be screened for previous confirmation of a class I confirmed incident or incidents of abuse or neglect against a consumer or consumers. Applicants with a confirmed history of abuse or neglect will not be considered for employment.

**Case Manager III**  
**Taft**  
**Monday-Friday 8-5**  
**\$3,143.00-\$3,342.00 Monthly**  
**Posting: #2205**  
**Closes: Until Filled**



Coastal Plains Integrated Health is committed to providing a Trauma-informed environment for employees and the people we serve.

**About our Organization:**

Coastal Plains is a certified community behavioral health center (CCBHC). The center provides behavioral health services, primary health services, and substance use services to children and adults. We offer employees a strong benefit package which includes the above posted salary. Our philosophy is to take care of our employees so they can take care of the people we serve.

**Case Manager Responsibilities:**

The Case Manager works as a member of an integrated treatment team. Staff is responsible for providing rehabilitation, crisis services and support services to adult consumers identified with severe and persistent mental illness. Services provided to individuals in authorized level of care include pharmacological management services, and rehabilitation services. Nature of work requires frequent in-person, long-term contact with individuals, family members, and service providers. Job performance requires an automobile, extensive travel, and flexible hours to provide services. Job also requires staff to facilitate skills activities in a group or individual setting to clients served by Coastal Plains Integrated Health. Works under the supervision of the Clinic Director or designee. Job requires high level of clinical skills necessary for independent judgment.

**MINIMUM QUALIFICATIONS:**

A Bachelor's Degree from an accredited college or university with a major in Social or Behavioral Health which is defined as psychology, social work, medicine, nursing, rehabilitation, counseling, sociology, human growth and development, physician assistant, gerontology, special education, educational psychology, early childhood education, or early childhood intervention. Salary is commensurate with education and experience per Coastal Plains' career ladder. Class C operator's license with evidence of a good driving record.

**PREFERRED REQUIREMENTS:**

- Knowledge of Microsoft office and basic computer skills as demonstrated by a performance exam.
- Able to communicate orally in Spanish.
- Master's Degree.
- One-year experience in adult MH case management/rehab skills training.
- Demonstrates knowledge of local support services available in San Patricio County.

**BENEFIT PACKAGE:**

- Free LPC-A supervision
- A fully funded health, dental, vision package and short-term disability
- \$10,000 employer sponsored life insurance
- Elective life up to 100k guaranteed issue at sign on
- Employer sponsored retirement plan 401(a) with 150% matching funds
- Elective retirement plan 403(b) option
- 13 paid holidays
- 144 hours of paid vacation
- Longevity pay
- Potential end of year merit

**Intake LPHA**  
**TBD**  
**Monday-Friday 8-5 (Flex)**  
**\$5,500.00 Monthly**  
**Posting: #2232**  
**Closes: Until filled**



Coastal Plains Integrated Health is committed to providing a Trauma-informed environment for employees and the people we serve.

**About our Organization:**

Coastal Plains is a certified community behavioral health center (CCBHC). The center provides behavioral health services, primary health services, and substance use services to children and adults. We offer employees a strong benefit package which includes the above posted salary. Our philosophy is to take care of our employees so they can take care of the people we serve.

**APPLICANT QUALIFICATIONS:**

**GENERAL DESCRIPTION:**

This position is responsible for providing CBT, psychosocial assessments, diagnostic evaluations/reviews and will determine eligibility for individuals and families seeking mental health services from Coastal Plains Integrated Health. This position will provide virtual and face to face services to individuals in our nine county service area.

**MINIMUM QUALIFICATIONS:**

Must hold current license from the state of Texas in one of the following areas: a medical physician, Licensed Professional Counselor, LMSW-ACP, licensed psychologist, advanced practice nurse, Licensed Clinical Social Worker. Must have a current Texas Driver's license.

**PREFERRED REQUIREMENTS:**

1. Any practitioner certified by Academy of Cognitive Therapy, Beck Institute for CBT, or the Reach Institute to provide CBT in the state of Texas or be capable of obtaining CBT certification with assistance from the Center.
2. Practitioner has experience working in an outpatient setting.
3. Practitioner is familiar with entering information into an electronic medical record.

**BENEFIT PACKAGE:**

- Free LPC-A supervision
- A fully funded health, dental, vision package and short-term disability
- \$10,000 employer sponsored life insurance
- Elective life up to 100k guaranteed issue at sign on
- Employer sponsored retirement plan 401(a) with 150% matching funds
- Elective retirement plan 403(b) option
- 13 paid holidays
- 144 hours of paid vacation
- Longevity pay
- Potential end of year merit

**Rehab Caseworker III (Adult)**  
**Alice, TX**  
**Monday-Friday 8-5**  
**\$3,143.00 – \$3,342.00 Monthly**  
**Posting: #2251**  
**Closes: Until Filled**



Coastal Plains Integrated Health is committed to providing a Trauma-informed environment for employees and the people we serve.

**About our Organization:**

Coastal Plains is a certified community behavioral health center (CCBHC). The center provides behavioral health services, primary health services, and substance use services to children and adults. We offer employees a strong benefit package which includes the above posted salary. Our philosophy is to take care of our employees so they can take care of the people we serve.

**Rehab Caseworker responsibilities:**

Works as a member of an integrated treatment team. Staff is responsible for providing rehabilitation and support services, to consumers identified with severe and persistent mental illness. Services provided to adult individuals in authorized service package include Pharmacological management services, and rehabilitation services. Nature of work requires frequent in-person, long-term contact with individuals, family members, and service providers. Job performance requires an automobile, extensive travel, and flexible hours to provide services. Job also requires staff to facilitate skills activities in a group or individual setting to clients served by Coastal Plains Integrated Health. Works under the supervision of the Clinic Director or designee. Job requires high level of clinical skills necessary for independent judgment.

**MINIMUM QUALIFICATIONS:**

A Bachelor's Degree from an accredited college or university with a major in social, behavioral health, or human services. Salary is commensurate with education and experience per Coastal Plains' career ladder. Must have a Class "C" driver's license with evidence of a good driving record. Reliable transportation a must.

**PREFERRED REQUIREMENTS:**

- Knowledge of the needs and characteristics associated with the target population
- Proficient computer skills to perform job functions
- Ability community effectively orally and in writing
- Knowledge of local community resources and how to access those services
- Ability to establish a therapeutic relationship with consumers and their support system and to set and maintain boundaries

**BENEFIT PACKAGE:**

- Free LPC-A supervision
- A fully funded health, dental, vision package and short-term disability
- \$10,000 employer sponsored life insurance
- Elective life up to 100k guaranteed issue at sign on
- Employer sponsored retirement plan 401(a) with 150% matching funds
- Elective retirement plan 403(b) option
- 13 paid holidays
- 144 hours of paid vacation
- Longevity pay
- Potential end of year merit

**Case Manager III**  
**Alice MH**  
**Monday-Friday 8-5**  
**\$3,342.00 Monthly**  
**Posting: #2264**  
**Closes: Until Filled**



Coastal Plains Integrated Health is committed to providing a Trauma-informed environment for employees and the people we serve.

**About our Organization:**

Coastal Plains is a certified community behavioral health center (CCBHC). The center provides behavioral health services, primary health services, and substance use services to children and adults. We offer employees a strong benefit package which includes the above posted salary. Our philosophy is to take care of our employees so they can take care of the people we serve.

**Case Manager Responsibilities:**

This position will provide crisis care services to multiple clinics. This crisis worker will service Jim Wells, Duval and Brooks counties. Other duties to be provided will be screenings, post hospital follow-ups, crisis follow-up and maintain contact with psychiatric facilities. This position will also maintain a small caseload. Crisis worker will provide aggressive interventions and frequent in-person contact with individuals and their families, by providing on-going Rehabilitative and Case management services for adults and children with a mental health diagnosis. Case management services consists of gaining access to medical, social, educational and other unmet needs. Provides Rehabilitative services that focus on positive outcomes with reduction in symptoms increase in level of functioning and maximum mental health improvements. Work is community and site based. Schedule will be flexible. This position will report to the San Diego Clinic Director.

**MINIMUM QUALIFICATIONS:**

A Bachelor's Degree from an accredited college or university with a major in Social, Behavioral, or Human Services which is defined as psychology, social work, medicine, nursing, rehabilitation, counseling, sociology, human growth and development, physician assistant, gerontology, special education, educational psychology, early childhood education, or early childhood intervention. Class C operator's license with evidence of a good driving record

**PREFERRED REQUIREMENTS:**

- Minimum proficiency with computer software as demonstrated by knowledge of Microsoft Applications2.
- Lives within service area (Jim Wells or Duval County)
- Excellent verbal and written communication skills as demonstrated by oral and written interview
- Is able to communicate in Spanish Experience working with this target population (adults and children) who are experiencing crisis situations

**BENEFIT PACKAGE:**

- Free LPC-A supervision
- A fully funded health, dental, vision package and short-term disability
- \$10,000 employer sponsored life insurance
- Elective life up to 100k guaranteed issue at sign on
- Employer sponsored retirement plan 401(a) with 150% matching funds
- Elective retirement plan 403(b) option
- 13 paid holidays
- 144 hours of paid vacation
- Longevity pay
- Potential end of year merit

**Rehab Caseworker II & III**  
**Alice, TX MH**  
**Monday-Friday 8-5**  
**\$3,143.00 – \$3,342.00 Monthly**  
**Posting: #2273**  
**Closes: Until Filled**



Coastal Plains Integrated Health is committed to providing a Trauma-informed environment for employees and the people we serve.

**About our Organization:**

Coastal Plains is a certified community behavioral health center (CCBHC). The center provides behavioral health services, primary health services, and substance use services to children and adults. We offer employees a strong benefit package which includes the above posted salary. Our philosophy is to take care of our employees so they can take care of the people we serve.

**Caseworker responsibilities:**

Works with the Center's Youth and Adolescent program to help clients improve mental health symptoms by providing Case management, Rehabilitative Skills Training and support services. Works closely with other youth team members and community partners. Nature of work involves virtual care, and in-person contact with individuals and their caretaker at the office, school and/or home location. Job requires some clinical skills necessary for independent judgement. Job performance requires an automobile, and flexible hours to provide services. Works under the supervision of the Youth and Family program manager or designee.

**MINIMUM QUALIFICATIONS:**

A Bachelor's Degree from an accredited college or university with a major in Social, Behavioral Health, or Human Services. Salary is commensurate with education and experience per Coastal Plains' career ladder.

**PREFERRED REQUIREMENTS:**

- Knowledge of Microsoft office and basic computer skills
- Able to communicate orally in Spanish.
- One-year experience in MH Case management/rehab skills training.
- One Year Experience working with youth, adolescents and families
- Maintain class "C" license with less than 10 penalty points
- Lives within a 30 minute commute from Aransas Pass Texas.
- Master's degree in major of social, behavior health or human services.

**BENEFIT PACKAGE:**

- Free LPC-A supervision
- A fully funded health, dental, vision package and short-term disability
- \$10,000 employer sponsored life insurance
- Elective life up to 100k guaranteed issue at sign on
- Employer sponsored retirement plan 401(a) with 150% matching funds
- Elective retirement plan 403(b) option
- 13 paid holidays
- 144 hours of paid vacation
- Longevity pay
- Potential end of year merit

**YES Wraparound Facilitator Case Manager**  
**Alice, TX**  
**Monday-Friday 8-5**  
**\$3,143.00 - \$3,342.00 Monthly**  
**Posting: #2276**  
**Closes: Until filled**



Coastal Plains Integrated Health is committed to providing a Trauma-informed environment for employees and the people we serve.

**About our Organization:**

Coastal Plains is a certified community behavioral health center (CCBHC). The center provides behavioral health services, primary health services, and substance use services to children and adults. We offer employees a strong benefit package which includes the above posted salary. Our philosophy is to take care of our employees so they can take care of the people we serve.

**YES Wraparound Facilitator Case Manager Responsibilities:**

Performs care coordination with children and their families; gathering behavior, psychological social and developmental information to coordinates and monitors service delivery according to Wraparound Plan. Position will lead the integrated child family team meetings to discover the child and family strengths and identified needs to develop treatment Goals, Objectives and Interventions to reduce identified risk factors. The Wraparound Facilitator will make necessary referrals based on the discovered needs and provide follow up. Nature of work requires frequent contact with individuals, family members, and service providers. Caseload size 1 to 10 ratio. Job performance requires an automobile and flexible hours to provide services. Works under the supervision of the YES Program Manager or designee.

**MINIMUM QUALIFICATIONS:**

Bachelor's degree from an accredited college or university with a major in social, behavioral health, or human services. Salary is commensurate with education and experience.

**PREFERRED REQUIREMENTS:**

1. Knowledge of child and adolescent mental illness
2. Knowledge of basic casework principles and general community resources.
3. Job requires high level of clinical skill necessary for independent judgement.
4. Knowledge in engagement
5. Ability to communicate effectively
6. Knowledge of casework documentation requirements
7. Knowledge and understanding of program guidelines, policies and procedures and ability to carry out responsibilities
8. Current class C operator's license with a good driving record as evidenced by driver's license check.
9. Work history, which demonstrates an ability to work under minimal supervision.
10. Ability to communicate in Spanish

**BENEFIT PACKAGE:**

- Free LPC-A supervision
- A fully funded health, dental, vision package and short-term disability
- \$10,000 employer sponsored life insurance
- Elective life up to 100k guaranteed issue at sign on
- Employer sponsored retirement plan 401(a) with 150% matching funds
- Elective retirement plan 403(b) option
- 13 paid holidays
- 144 hours of paid vacation
- Longevity pay
- Potential year end merit



## **CFC Service Coordinator/Case Manager III**

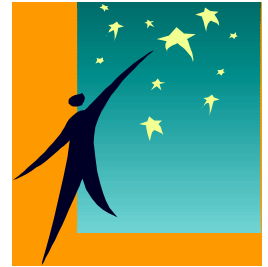
**Alice, TX**

**Monday-Friday 8-5**

**\$3,143.00 - \$3,342.00 Monthly**

**Posting: #2287**

**Closes: Until Filled**



Coastal Plains Integrated Health is committed to providing a Trauma-informed environment for employees and the people we serve.

### **About our Organization:**

Coastal Plains is a certified community behavioral health center (CCBHC). The center provides behavioral health services, primary health services, and substance use services to children and adults. We offer employees a strong benefit package which includes the above posted salary. Our philosophy is to take care of our employees so they can take care of the people we serve.

### **Service Coordinator/Case Manager responsibilities:**

Provides ongoing case management services for more than 30 persons with IDD and other related conditions. Performs single function case management services to assist assigned individuals in gaining access to medical, social, educational and other needed services. Performs the case management duties in accordance to the Service Coordination GR, CFC and Waiver standards. The nature of the work requires aggressive interventions and frequent in-person long-term contact with the individual's families and service providers. The job requires extensive travel for community-based service provision and flexible hours and schedule. Participates in 24-hour, on call system for own caseload. The position reports to the CFC Supervisor.

### **MINIMUM QUALIFICATIONS:**

Bachelor's degree from an accredited college or university with a major in a Social, Behavioral Health, or Human Services which is defined as psychology, social work, medicine, nursing, rehabilitation, counseling, sociology, human growth and development, gerontology, education psychology, education, and criminal justice. Salary is commensurate with education and experience per Coastal Plains' career ladder. Must maintain class "C" driver's license with evidence of a good driving record.

### **PREFERRED REQUIREMENTS:**

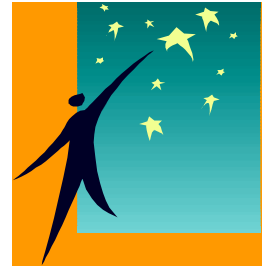
- Case Management or Social Work experience
- Ability to communicate in Spanish
- Knowledge of computer programs
- Good organizational skills

### **BENEFIT PACKAGE:**

- Free LPC-A supervision
- A fully funded health, dental, vision package and short-term disability
- \$10,000 employer sponsored life insurance
- Elective life up to 100k guaranteed issue at sign on
- Employer sponsored retirement plan 401(a) with 150% matching funds
- Elective retirement plan 403(b) option
- 13 paid holidays
- 144 hours of paid vacation
- Longevity pay
- Potential end of the year merit



**CFC Service Coordinator/Case Manager III**  
**Portland, TX**  
**Monday-Friday 8-5**  
**\$3,143.00 - \$3,342.00 Monthly**  
**Posting: #2288**  
**Closes: Until Filled**



Coastal Plains Integrated Health is committed to providing a Trauma-informed environment for employees and the people we serve.

**About our Organization:**

Coastal Plains is a certified community behavioral health center (CCBHC). The center provides behavioral health services, primary health services, and substance use services to children and adults. We offer employees a strong benefit package which includes the above posted salary. Our philosophy is to take care of our employees so they can take care of the people we serve.

**Service Coordinator/Case Manager responsibilities:**

Provides ongoing case management services for more than 30 persons with IDD and other related conditions. Performs single function case management services to assist assigned individuals in gaining access to medical, social, educational and other needed services. Performs the case management duties in accordance to the Service Coordination GR, CFC and Waiver standards. The nature of the work requires aggressive interventions and frequent in-person long-term contact with the individual's families and service providers. The job requires extensive travel for community-based service provision and flexible hours and schedule. Participates in 24-hour, on call system for own caseload. The position reports to the CFC Supervisor.

**MINIMUM QUALIFICATIONS:**

Bachelor's degree from an accredited college or university with a major in a Social, Behavioral Health, or Human Services which is defined as psychology, social work, medicine, nursing, rehabilitation, counseling, sociology, human growth and development, gerontology, education psychology, education, and criminal justice. Salary is commensurate with education and experience per Coastal Plains' career ladder. Must maintain class "C" driver's license with evidence of a good driving record.

**PREFERRED REQUIREMENTS:**

- Case Management or Social Work experience
- Ability to communicate in Spanish
- Knowledge of computer programs
- Good organizational skills

**BENEFIT PACKAGE:**

- Free LPC-A supervision
- A fully funded health, dental, vision package and short-term disability
- \$10,000 employer sponsored life insurance
- Elective life up to 100k guaranteed issue at sign on
- Employer sponsored retirement plan 401(a) with 150% matching funds
- Elective retirement plan 403(b) option
- 13 paid holidays
- 144 hours of paid vacation
- Longevity pay
- Potential end of the year merit

**Adult Mental Health First Aid Coordinator (MHFA)**  
**Portland, TX**  
**Monday-Friday 8-5**  
**\$4,040.00 Monthly**  
**Posting: #2289**  
**Closes: Until Filled**



Coastal Plains Integrated Health is committed to providing a Trauma-informed environment for employees and the people we serve.

**About our Organization:**

Coastal Plains is a certified community behavioral health center (CCBHC). The center provides behavioral health services, primary health services, and substance use services to children and adults. We offer employees a strong benefit package which includes the above posted salary. Our philosophy is to take care of our employees so they can take care of the people we serve.

**Adult Mental Health First Aid Coordinator responsibilities:**

Staff is responsible for providing Adult Mental Health First Aid (MHFA) and Youth MHFA training to public school district employees, public school resource officers, university employees, law enforcement staff and other participants as a preventative measure to assist in early identification of adult, or youth at risk of social-emotional disorders. Staff will be responsible for submitting monthly and quarterly reports/invoices to HHSC and working closely with the Local Community Partners. The primary focus will be to increase awareness of MHFA training, increase the number of MHFA training sessions available, and increase the number of overall trainings completed in the current fiscal year compared to the previous fiscal year. Staff must be able to pass MHFA certification within 90 days of employment. Works under the supervision of the Center's Quality Management Director. Job requires high level of clinical skills necessary for independent judgment.

**MINIMUM QUALIFICATIONS:**

Any combination of education and experience equivalent to a Bachelor's degree from an accredited college or university with a major appropriate to the requirements of the position, plus three (3) years' experience in related duties in the administration of a program or related to the duties of the position.

**PREFERRED REQUIREMENTS:**

1. Knowledge of Microsoft Office and basic computer skills as demonstrated by a performance exam.
2. Able to communicate orally in Spanish.
3. One year experience in providing MHFA trainings or presentations.
4. Has experience working with I.S.D.'s and/or Education Service Centers.
5. Ability to obtain and maintain certification in both Adult and Youth MHFA.
6. Ability to successfully complete data processing/typing assignments.
7. Ability to handle multiple task demands.
8. Ability to organize and prioritize workload for self.
9. Ability to greet and interact with the public.
10. Ability to maintain current and valid class "C" driver's license with no more than 10 penalty points.

**BENEFIT PACKAGE:**

- A fully funded health, dental, vision package and short-term disability
- \$10,000 employer sponsored life insurance
- Elective life up to 100k guaranteed issue at sign on
- Employer sponsored retirement plan 401(a) with 150% matching funds
- Elective retirement plan 403(b) option
- 13 paid holidays
- 144 hours of paid vacation
- Longevity pay
- Potential end of the year merit

**Rehab Case Worker/Case Manager III**  
**Kingsville, TX**  
**Monday-Friday 8-5**  
**\$3,143.00 - \$3,342.00 Monthly**  
**Posting: #2290**  
**Closes: Until Filled**



Coastal Plains Integrated Health is committed to providing a Trauma-informed environment for employees and the people we serve.

**About our Organization:**

Coastal Plains is a certified community behavioral health center (CCBHC). The center provides behavioral health services, primary health services, and substance use services to children and adults. We offer employees a strong benefit package which includes the above posted salary. Our philosophy is to take care of our employees so they can take care of the people we serve.

**Rehab Caseworker/Case Manager responsibilities:**

Works with the Center's Youth and Adolescent program to help clients improve mental health symptoms by providing Case management, Rehabilitative Skills Training and support services. Works closely with other youth team members and community partners. Nature of work involves virtual care, and in-person contact with individuals and their caretaker at the office, school and/or home location. Job requires some clinical skills necessary for independent judgement. Job performance requires an automobile, and flexible hours to provide services. Works under the supervision of the Youth and Family program manager or designee.

**MINIMUM QUALIFICATIONS:**

Bachelor's degree from an accredited college or university with a major in social, behavioral health, or human services. Salary is commensurate with education and experience per Coastal Plains' career ladder.

**PREFERRED REQUIREMENTS:**

- Knowledge of Microsoft office and basic computer skills
- Able to communicate orally in Spanish.
- One-year experience in MH Casemanagement/rehab skills training.
- One Year Experience working with youth, adolescents and families
- Maintain class "C" license with less than 10 penalty points
- Lives within a 30 minute commute from Kingsville Texas.
- Master's degree in major of social, behavior health or human services.

**BENEFIT PACKAGE:**

- Free LPC-A supervision
- A fully funded health, dental, vision package and short-term disability
- \$10,000 employer sponsored life insurance
- Elective life up to 100k guaranteed issue at sign on
- Employer sponsored retirement plan 401(a) with 150% matching funds
- Elective retirement plan 403(b) option
- 13 paid holidays
- 144 hours of paid vacation
- Longevity pay
- Potential end of the year merit

**CMA/or LVN**  
**Taft, TX**  
**Monday-Friday 8-5**  
**\$2,684.00 - \$3,283.00 Monthly**  
**Posting: #2291**  
**Closes: Until Filled**



Coastal Plains Integrated Health is committed to providing a Trauma-informed environment for employees and the people we serve.

**About our Organization:**

Coastal Plains is a certified community behavioral health center (CCBHC). The center provides behavioral health services, primary health services, and substance use services to children and adults. We offer employees a strong benefit package which includes the above posted salary. Our philosophy is to take care of our employees so they can take care of the people we serve.

**General Responsibilities:**

The position of Licensed Vocational Nurse and or Certified Medical Assistant, is designed to ensure the effective and efficient delivery of nursing and or assisting nursing services to mental health consumers enrolled in Coastal Plains Community Center. This position is a great opportunity for individuals looking for a career in behavioral health. LVNs/ CMAs coordinate and assist the clinic psychiatrist on scheduled clinic days; coordinates medication services to consumers, to include injections and medication education. The LVN/ CMA serves both needs of adult and child services. LVN/ CMA reports clinically to the Director of Nursing and administratively to the assigned Clinic Director.

**MINIMUM QUALIFICATIONS:**

Holds current unrestricted certificate as a Certified Medical Assistant in the State of Texas, plus one (1) year experience in assisting medical staff in administering therapeutic programs and monitoring patient conditions. Ability to maintain Class C driver's license with less than 10 penalty points.

Graduate from accredited school of nursing. LVN holds current unrestricted license as a licensed vocational nurse in the State of Texas. Ability to maintain Class C driver's license with less than 10 penalty points.

**PREFERRED REQUIREMENTS:**

1. Applicant has knowledge in Office, Outlook and Excel.
2. Applicant lives within 30-minute commute from Clinic.
3. Applicant has experience working in an outpatient setting.
4. Applicant has experience working with individuals diagnosed with a mental illness.

**BENEFIT PACKAGE:**

- A fully funded health, dental, vision package and short-term disability
- \$10,000 employer sponsored life insurance
- Elective life up to 100k guaranteed issue at sign on
- Employer sponsored retirement plan 401(a) with 150% matching funds
- Elective retirement plan 403(b) option
- 13 paid holidays
- 144 hours of paid vacation
- Longevity pay
- Potential end of the year merit