



Coastal Plains Integrated Health

200 Marriot Drive
P.O. Box 1336
Portland, Texas 78374
www.coastalplainsctr.org

Bulletin 1221

June 20, 2025 – June 27, 2025

Applications Accepted via our website www.coastalplainsctr.org. *If the position has a closing date, the Applications must be received by closing date to be eligible for consideration.* Resumes are **NOT ACCEPTED in lieu of an application. **We will not accept faxed applications.****

We are an Equal Opportunity/ADA/Affirmative Action Employer

Requirements:

Every person hired at Coastal Plains Integrated Health is considered an employee of the Center regardless of who made the offer of employment. Employment assignments may change due to budgetary, disciplinary, or administrative reasons. All changes in employment assignments will be handled in accordance with laws prohibiting any form of discrimination. All positions require the ability to work flexible hours and days as needed.

Positions requiring specific academic achievement and/or specific course attainment will require you to attach a copy of a transcript, certification and/or License to your application. All other positions will require verification of high school diploma or GED.

As per the Immigration Reform and Control Act of 1986 (§1200) all applicants for employment are required to provide documents that provide proof of employment authorization and identity. (Social Security Card, Driver's License, and (or) alternate documents as per regulations).

Criminal convictions involving personal injury, threat to another person, drug related offenses, etc., may make you ineligible for employment at Coastal Plains Integrated Health. Names of prospective employees are cleared through the Texas Department of Public Safety to determine the existence of such records. Falsification of the application for employment is grounds for dismissal, if employed.

For positions that require travel/driving, applicants must maintain a class "C" driver's license with a favorable driving record as evidenced by DPS Moving Violation report.

Coastal Plains Integrated Health is a DRUG FREE WORKPLACE. Effective August 1, 1996, before employment, all applicants are given a "conditional" offer of employment and will be required to take and pass a drug test. Physical assessment tests will be required for certain positions.

Effective July 1, 2002, all applicants for employment will be notified that prior to an offer of employment, they will be screened for previous confirmation of a class I confirmed incident or incidents of abuse or neglect against a consumer or consumers. Applicants with a confirmed history of abuse or neglect will not be considered for employment.

EO Family Partner Provider (Part Time)
Taft, TX
20 hrs. a week / Monday-Friday 8am to 5pm/Flex
\$1,236.00 Monthly
Posting: #2377
Closes: Until Filled



Coastal Plains Integrated Health is committed to providing a Trauma-informed environment for employees and the people we serve.

About our Organization:

Coastal Plains is a certified community behavioral health center (CCBHC). The center provides behavioral health services, primary health services, and substance use services to children and adults. We offer employees a strong benefit package which includes the above posted salary. Our philosophy is to take care of our employees so they can take care of the people we serve.

EO Family Partner Provider Responsibilities:

Provide supports to the LAR and/or Primary Care of individuals in CPIH's Early Onset (EO) program. We will be a mediator, Facilitator or a bridge between families and other agencies in the community. Provide advocacy that encourages the positive vision that the caregiver has for their family members mental health and recovery. Provides mentoring through the transfer of knowledge, insight, experience, and encouragement, which will include the articulation of their own successful experience navigating a treatment system. Will connect families to community resources and informal supports and will help nurture those relationships. Will also help the family identify natural family supports and strengths. The Family Partner works under the direction of the EO Program Manager.

MINIMUM QUALIFICATIONS:

- Parent or Legal Authorized Authority (LAR) of a child with a serious emotional disturbance and have at least one-year experience navigation child serving agencies.
- Must have a High School diploma or GED.
- Be able to articulate their lived experience as it relates to advocacy for their child and success in navigating child service systems.
- Have lived experience that speaks to accomplishments concerning their child's mental health, including their child being in a stable place in their recovery and or resiliency.
- Can meet requirements for Medicaid background check.
- Must become certified through Via Hope training and credentialing entity recognized by HHSC within one year of becoming hired.

PREFERRED REQUIREMENTS:

- A current certified Family Partner (Via Hope Credentialing)
- Current class "C" license with a good driving record
- Local residency is within 30 minutes to duty station.
- Ability to communicate in Spanish
- Reliable transportation with valid insurance.

BENEFIT PACKAGE:

- Employer sponsored retirement plan 401(a) with 150% matching funds
- Elective retirement plan 403(b) option
- 14 paid holidays
- 78 hours of paid vacation
- Potential end of year merit

EO Family Partner Provider (Part Time)
Kingsville, TX
20 hrs. a week/ Monday-Friday 8-5 (Flex)
\$1,236 Monthly
Posting: #2378
Closes: Until Filled



Coastal Plains Integrated Health is committed to providing a Trauma-informed environment for employees and the people we serve.

About our Organization:

Coastal Plains is a certified community behavioral health center (CCBHC). The center provides behavioral health services, primary health services, and substance use services to children and adults. We offer employees a strong benefit package which includes the above posted salary. Our philosophy is to take care of our employees so they can take care of the people we serve.

EO Family Partner Provider Responsibilities:

Provide supports to the LAR and/or Primary Care of individuals in CPIH's Early Onset (EO) program. We will be a mediator, Facilitator or a bridge between families and other agencies in the community. Provide advocacy that encourages the positive vision that the caregiver has for their family members mental health and recovery. Provides mentoring through the transfer of knowledge, insight, experience, and encouragement, which will include the articulation of their own successful experience navigating a treatment system. Will connect families to community resources and informal supports and will help nurture those relationships. Will also help the family identify natural family supports and strengths. The Family Partner works under the direction of the EO Program Manager.

MINIMUM QUALIFICATIONS:

- Parent or Legal Authorized Authority (LAR) of a child with a serious emotional disturbance and have at least one-year experience navigation child serving agencies.
- Must have a High School diploma or GED.
- Be able to articulate their lived experience as it relates to advocacy for their child and success in navigating child service systems.
- Have lived experience that speaks to accomplishments concerning their child's mental health, including their child being in a stable place in their recovery and or resiliency.
- Can meet requirements for Medicaid background check.
- Must become certified through Via Hope training and credentialing entity recognized by HHSC within one year of becoming hired.

PREFERRED REQUIREMENTS:

- A current certified Family Partner (Via Hope Credentialing)
- Current class "C" license with a good driving record
- Local residency is within 30 minutes to duty station.
- Ability to communicate in Spanish
- Reliable transportation with valid insurance.

BENEFIT PACKAGE:

- Employer sponsored retirement plan 401(a) with 150% matching funds
- Elective retirement plan 403(b) option
- 14 paid holidays
- 78 hours of paid vacation
- Potential end of year merit

Rehab Caseworker/Case Manager III
Falfurrias, TX
Monday-Friday 8-5 (Flex)
\$3,143.00-3,342.00 Monthly
Posting: #2392
Closes: Until Filled



Coastal Plains Integrated Health is committed to providing a Trauma-informed environment for employees and the people we serve.

About our Organization:

Coastal Plains is a certified community behavioral health center (CCBHC). The center provides behavioral health services, primary health services, and substance use services to children and adults. We offer employees a strong benefit package which includes the above posted salary. Our philosophy is to take care of our employees so they can take care of the people we serve.

Rehab Caseworker III/Case Manager Responsibilities:

Works with the Center's Youth and Adolescent program to help clients improve mental health symptoms by providing Case management, Rehabilitative Skills Training and support services. Works closely with other youth team members and community partners. Nature of work involves virtual care, and in-person contact with individuals and their caretaker at the office, school and/or home location. Job requires some clinical skills necessary for independent judgement. Job performance requires an automobile, and flexible hours to provide services. Works under the supervision of the Falfurrias Clinic Director.

MINIMUM QUALIFICATIONS:

Bachelor's degree from an accredited college or university with a major in social, behavioral health, or human services. Salary is commensurate with education and experience per Coastal Plains career ladder. Must have a Class "C" Driver's License.

PREFERRED REQUIREMENTS:

- Knowledge of Microsoft office and basic computer skills
- Able to communicate orally in Spanish.
- One-year experience in MH Case Management/rehab skills training.
- One Year Experience working with youth, adolescents and families
- Master's degree in major of social, behavior health or human services.

BENEFIT PACKAGE:

- Free LPC-A supervision
- A fully funded health, dental, and short-term disability package
- Pet Insurance
- \$10,000 employer sponsored life insurance
- Elective life up to 100k guaranteed issue at sign on
- Employer sponsored retirement plan 401(a) with 150% matching funds
- Elective retirement plan 403(b) option
- 14 paid holidays
- 156 hours of paid vacation
- Longevity pay
- Potential end of year merit

Program Facilitator/Human Services Tech II, III, IV
Taft, TX
Monday – Friday 8am-5pm (flex)
\$1,690.00-\$2,206.00 Monthly
Posting: #2395
Closes: Until Filled



Coastal Plains Integrated Health is committed to providing a Trauma-informed environment for employees and the people we serve.

About our Organization:

Coastal Plains is a certified community behavioral health center (CCBHC). The center provides behavioral health services, primary health services, and substance use services to children and adults. We offer employees a strong benefit package which includes the above posted salary. Our philosophy is to take care of our employees so they can take care of the people we serve.

Program Facilitator/Human Services Tech responsibilities:

This position is based in Taft, TX, at the Coastal Plains IDD Day Habilitation Center. The Program Facilitator is responsible for implementing training strategies; transporting consumers, providing job coaching and assisting consumers with self-help and activities of daily living. Other job duties involve teaching and assisting persons with intellectual disabilities, supervision with daily activities of money management, cooking, nutrition, safety, etc. Periodic assistance with medical appointments, community activities, and rotating weekends is included. Documentation of services, Medicaid billing, and maintenance of vehicles are also applicable job duties. This position is under the immediate supervision of the Coordinator of Day Services.

MINIMUM QUALIFICATIONS:

- A high school diploma or GED certificate
- Related experience with persons with disabilities
- A valid class "C" Texas Driver's license, with a good driving record

PREFERRED REQUIREMENTS:

- Work history demonstrating an ability to work under minimal supervision.
- Stable work record demonstrated by longevity with previous employer (Two years or longer).
- Have related job experience with individuals with IDD.
- Previous experience working with persons with cognitive disabilities.
- Trauma Informed, HCS and Tx-HmL Waiver services experience.
- Certified Nursing Assistant (CNA) or Certified Medical Assistant (CMA) with current certification.

BENEFIT PACKAGE:

- Pay enhancement for CMA or CNA certification
- A fully funded health, dental, vision package and short-term disability
- Pet Insurance
- \$10,000 employer sponsored life insurance
- Elective life up to 100k guaranteed issue at sign on
- Employer sponsored retirement plan 401(a) with 150% matching funds
- Elective retirement plan 403(b) option
- 14 paid holidays
- 156 hours of paid vacation
- Longevity pay
- Potential end of year merit

Rehab Caseworker/Case Manager III
San Diego, TX
Monday-Friday 8-5 (Flex)
\$3,342.00 Monthly
Posting: #2398
Closes: Until Filled



Coastal Plains Integrated Health is committed to providing a Trauma-informed environment for employees and the people we serve.

About our Organization:

Coastal Plains is a certified community behavioral health center (CCBHC). The center provides behavioral health services, primary health services, and substance use services to children and adults. We offer employees a strong benefit package which includes the above posted salary. Our philosophy is to take care of our employees so they can take care of the people we serve.

Rehab Caseworker III/Case Manager Responsibilities:

Works as a member of the Coordinated Specialty Care (Early Onset) team. Staff is responsible for providing rehabilitation, Crisis services and support services, to consumers aged 15 to 30 with severe and persistent mental illness in the home, school, community or office setting. Services provided to individuals in authorized level of care include Pharmacological management services, and rehabilitation services. Nature of work requires frequent in-person, long-term contact with individuals, family members, and service providers. Job performance extensive travel and flexible hours to provide services and may occasionally transport consumers. Job also requires staff to facilitate skills activities in a group or individual setting to clients served by Coastal Plains Integrated Health. Works under the supervision of the program's Clinical Supervisor or designee. Job requires high level of clinical skills necessary for independent judgment. Will work directly with treatment team for clients who have experienced a First Episodic Break.

MINIMUM QUALIFICATIONS:

Bachelor's degree from an accredited college or university with a major in social, behavioral health, or human services. Must have a Class "C" Driver's License.

PREFERRED REQUIREMENTS:

- Knowledge of the needs and characteristics associated with the target population.
- Proficient computer skills to perform job functions.
- Ability to communicate effectively both orally and in writing.
- Knowledge of local community resources and how to access those services.
- Ability to demonstrate knowledge on the importance of productivity, time management, and organizational skills.
- Ability to establish a therapeutic relationship with consumers and their support system and to set and maintain boundaries.
- Ability to maintain a Class C license with less than ten (10) penalty points.

BENEFIT PACKAGE:

- Free LPC-A supervision
- A fully funded health, dental, and short-term disability package
- Pet Insurance
- \$10,000 employer sponsored life insurance
- Elective life up to 100k guaranteed issue at sign on
- Employer sponsored retirement plan 401(a) with 150% matching funds
- Elective retirement plan 403(b) option
- 14 paid holidays
- 156 hours of paid vacation
- Longevity pay
- Potential end of year merit

Human Services Tech II, III, IV, V
Odem, TX Group Home
Friday & Sat 2pm-6am Sun 2pm-10pm
\$1,869.00-\$2,206.00 Monthly
Posting: #2400
Closes: Until Filled



Coastal Plains Integrated Health is committed to providing a Trauma-informed environment for employees and the people we serve.

About our Organization:

Coastal Plains is a certified community behavioral health center (CCBHC). The center provides behavioral health services, primary health services, and substance use services to children and adults. We offer employees a strong benefit package which includes the above posted salary. Our philosophy is to take care of our employees so they can take care of the people we serve.

Human Services Tech responsibilities:

This position is primarily responsible for assisting cognitively challenged individuals in a group home setting. This position provides direct care, supervision, and training. Duties include transporting individuals, self-help or independent living skills training, documentation, maintenance of home, medical appointments, and assisting with their finances. This position reports to the Director of Waiver Services. Must have a class "C" driver's license.

MINIMUM QUALIFICATIONS:

- A high school diploma or GED certificate
- A valid class "C" Texas Driver's license, with a good driving record

PREFERRED REQUIREMENTS:

- Work history demonstrating an ability to work under minimal supervision.
- Stable work record demonstrated by longevity with previous employer (Two years or longer).
- Local residency within 20 minutes commute of duty station.
- Previous experience working with persons with cognitive disabilities.

BENEFIT PACKAGE:

- Pay enhancement for CMA or CNA certification
- A fully funded health, dental, vision package and short-term disability
- Pet Insurance
- \$10,000 employer sponsored life insurance
- Elective life up to 100k guaranteed issue at sign on
- Employer sponsored retirement plan 401(a) with 150% matching funds
- Elective retirement plan 403(b) option
- 14 paid holidays
- 156 hours of paid vacation
- Longevity pay
- Potential end of year merit

Rehab Caseworker/Case Manager III
Taft, TX
Monday-Friday 8-5 (Flex)
\$3,143 – 3,342.00 Monthly
Posting: #2402
Closes: Until Filled



Coastal Plains Integrated Health is committed to providing a Trauma-informed environment for employees and the people we serve.

About our Organization:

Coastal Plains is a certified community behavioral health center (CCBHC). The center provides behavioral health services, primary health services, and substance use services to children and adults. We offer employees a strong benefit package which includes the above posted salary. Our philosophy is to take care of our employees so they can take care of the people we serve.

Rehab Caseworker III/Case Manager Responsibilities:

Works as a member of an integrated treatment team. Staff is responsible for providing rehabilitation, Crisis services and support services, to Adult consumers identified with severe and persistent mental illness. Services provided to individuals in authorized level of care include Pharmacological management services, and rehabilitation services. Nature of work requires frequent in-person, long-term contact with individuals, family members, and service providers. Job performance requires an automobile, extensive travel, and flexible hours to provide services. Job also requires staff to facilitate skills activities in a group or individual setting to clients served by Coastal Plains Integrated Health. Works under the supervision of the Rockport/Aransas Pass Clinic Director. Job requires high level of clinical skills necessary for independent judgment.

MINIMUM QUALIFICATIONS:

A Bachelor's Degree from an accredited college or university with a major in Social or Behavioral Health which is defined as psychology, social work, medicine, nursing, rehabilitation, counseling, sociology, human growth and development, physician assistant, gerontology, special education, educational psychology, early childhood education, or early childhood intervention. Salary is commensurate with education and experience per Coastal Plains' career ladder. Class C operator's license with evidence of a good driving record.

PREFERRED REQUIREMENTS:

- Knowledge of Microsoft office and basic computer skills as demonstrated by a performance exam.
- Able to communicate orally in Spanish.
- Master's Degree.
- One-year experience in adult MH case management/rehab skills training.
- Demonstrates knowledge of local support services available in Bee county and Live Oak county.
- Ability to maintain a Class C license with less than ten (10) penalty points.

BENEFIT PACKAGE:

- Free LPC-A supervision
- A fully funded health, dental, and short-term disability package
- Pet Insurance
- \$10,000 employer sponsored life insurance
- Elective life up to 100k guaranteed issue at sign on
- Employer sponsored retirement plan 401(a) with 150% matching funds
- Elective retirement plan 403(b) option
- 14 paid holidays
- 156 hours of paid vacation
- Longevity pay
- Potential end of year merit

Rehab Caseworker/Case Manager III
Taft, TX
Monday-Friday 8-5 (Flex)
\$3,143 – 3,342.00 Monthly
Posting: #2403
Closes: Until Filled



Coastal Plains Integrated Health is committed to providing a Trauma-informed environment for employees and the people we serve.

About our Organization:

Coastal Plains is a certified community behavioral health center (CCBHC). The center provides behavioral health services, primary health services, and substance use services to children and adults. We offer employees a strong benefit package which includes the above posted salary. Our philosophy is to take care of our employees so they can take care of the people we serve.

Rehab Caseworker III/Case Manager Responsibilities:

Works with the Center's Adult program to help clients improve mental health symptoms by providing case management, rehabilitative skills training and support services. Works closely with Center team members and community partners. Nature of work involves virtual care, in person contact with individuals and their caretaker at the office, and/or home location. Job requires some clinical skills necessary for independent judgment. Job performance requires an automobile and flexible hour to provide services. Works under the supervision of the Clinic Director.

MINIMUM QUALIFICATIONS:

A Bachelor's Degree from an accredited college or university with a major in Social or Behavioral Health, or Human Services. Salary is commensurate with education and experience per Coastal Plains' career ladder. Class C operator's license with evidence of a good driving record.

PREFERRED REQUIREMENTS:

- Knowledge of Microsoft office and basic computer skills as demonstrated by a performance exam.
- Able to communicate orally in Spanish.
- Master's Degree.
- One-year experience in adult MH case management/rehab skills training.
- Demonstrates knowledge of local support services available in Bee county and Live Oak county.
- Ability to maintain a Class C license with less than ten (10) penalty points.

BENEFIT PACKAGE:

- Free LPC-A supervision
- A fully funded health, dental, and short-term disability package
- Pet Insurance
- \$10,000 employer sponsored life insurance
- Elective life up to 100k guaranteed issue at sign on
- Employer sponsored retirement plan 401(a) with 150% matching funds
- Elective retirement plan 403(b) option
- 14 paid holidays
- 156 hours of paid vacation
- Longevity pay
- Potential end of year merit

Rehab Caseworker/Case Manager III
Alice, TX
Monday-Friday 8-5 (Flex)
\$3,143 – 3,342.00 Monthly
Posting: #2404
Closes: Until Filled



Coastal Plains Integrated Health is committed to providing a Trauma-informed environment for employees and the people we serve.

About our Organization:

Coastal Plains is a certified community behavioral health center (CCBHC). The center provides behavioral health services, primary health services, and substance use services to children and adults. We offer employees a strong benefit package which includes the above posted salary. Our philosophy is to take care of our employees so they can take care of the people we serve.

Rehab Caseworker III/Case Manager Responsibilities:

Works with the Center's Youth and Adolescent program to help clients improve mental health symptoms by providing case management, rehabilitative skills training and support services. Works closely with other youth team members and community partners. Nature of work involves virtual care, in person contact with individuals and their caretaker at the office, school, and/or home location. Job requires some clinical skills necessary for independent judgment. Job performance requires an automobile and flexible hour to provide services. Works under the supervision of the Clinic Director.

MINIMUM QUALIFICATIONS:

A Bachelor's Degree from an accredited college or university with a major in Social or Behavioral Health, or Human Services. Salary is commensurate with education and experience per Coastal Plains' career ladder. Class C operator's license with evidence of a good driving record.

PREFERRED REQUIREMENTS:

- Knowledge of Microsoft office and basic computer skills as demonstrated by a performance exam.
- Able to communicate orally in Spanish.
- Master's Degree in major of social, behavior health or human services.
- One-year experience in adult MH case management/rehab skills training.
- One-year experience working with youth, adolescents and families.
- Lives within a 30 minute commute from Alice, TX.

BENEFIT PACKAGE:

- Free LPC-A supervision
- A fully funded health, dental, and short-term disability package
- Pet Insurance
- \$10,000 employer sponsored life insurance
- Elective life up to 100k guaranteed issue at sign on
- Employer sponsored retirement plan 401(a) with 150% matching funds
- Elective retirement plan 403(b) option
- 14 paid holidays
- 156 hours of paid vacation
- Longevity pay
- Potential end of year merit

Jail Diversion Specialist III/Case Manager IV
George West, TX
Monday-Friday 8-5 (Flex)
\$3,672.00 Monthly
Posting: #2405
Closes: Until Filled



Coastal Plains Integrated Health is committed to providing a Trauma-informed environment for employees and the people we serve.

About our Organization:

Coastal Plains is a certified community behavioral health center (CCBHC). The center provides behavioral health services, primary health services, and substance use services to children and adults. We offer employees a strong benefit package which includes the above posted salary. Our philosophy is to take care of our employees so they can take care of the people we serve.

Jail Diversion Specialist III III/Case Manager IV Responsibilities:

Works as a member of an integrated treatment team. Staff is responsible for providing rehabilitation, Crisis services and support services, to Adult inmates identified with severe and persistent mental illness who are involved in the criminal justice system. Services provided to individuals in authorized level of care include crisis services and rehabilitation services. Nature of work requires frequent in-person contact with individuals incarcerated at Live Oak County Jail. Job performance requires an automobile, some travel, and flexible hours to provide services. Works under the supervision of the Beeville Clinic Director or designee. Job requires high level of clinical skills necessary for independent judgment.

MINIMUM QUALIFICATIONS:

Master's degree from an accredited college or university with a major in social, behavioral health, or human services. Salary is commensurate with education and experience per Coastal Plains career ladder. Must Maintain Class "C" license with less than 10 penalty points.

PREFERRED REQUIREMENTS:

- Knowledge of Microsoft office and basic computer skills.
- Able to communicate orally in Spanish.
- One-year experience working with MH patients in an outpatient setting.
- Lives within a 30-minute commute from Live Oak County Jail.
- Licensed Professional Counselor Associate.

BENEFIT PACKAGE:

- A fully funded health, dental, and short-term disability package
- Pet Insurance
- \$10,000 employer sponsored life insurance
- Elective life up to 100k guaranteed issue at sign on
- Employer sponsored retirement plan 401(a) with 150% matching funds
- Elective retirement plan 403(b) option
- 14 paid holidays
- 156 hours of paid vacation
- Longevity pay
- Potential end of year merit

Licensed Vocational Nurse (LVN) II
Beeville, TX
Monday-Friday 8-5 (Flex)
\$3,283.00 Monthly
Posting: #2406
Closes: Until Filled



Coastal Plains Integrated Health is committed to providing a Trauma-informed environment for employees and the people we serve.

About our Organization:

Coastal Plains is a certified community behavioral health center (CCBHC). The center provides behavioral health services, primary health services, and substance use services to children and adults. We offer employees a strong benefit package which includes the above posted salary. Our philosophy is to take care of our employees so they can take care of the people we serve.

LVN Responsibilities:

The position of Licensed Vocational Nurse, Mental Health Services, is designed to ensure the effective and efficient delivery of nursing services to mental health consumers enrolled in Coastal Plains Integrated Health. This position is a great opportunity for individuals looking for a career in behavioral health. LVNs coordinate and assist the clinic psychiatrist on scheduled clinic days; coordinates medication services and assessments to consumers, to include injections and medication education. The LVN serves both the needs of adult and child services. Reports clinically to the Director of Nursing and administratively to the assigned Clinic Director.

MINIMUM QUALIFICATIONS:

Graduate from an accredited school of nursing. LVN holds current unrestricted license as a licensed vocational nurse in the State of Texas. Must have a Class C driver's license.

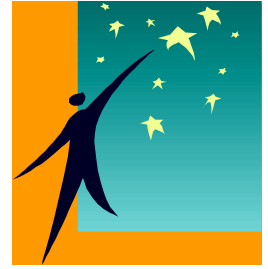
PREFERRED REQUIREMENTS:

- Knowledge in Office, Outlook, and Excel
- Lives within 30 minute commute from Clinic
- Experience working in an outpatient setting
- Experience working with individuals diagnosed with a mental illness

BENEFIT PACKAGE:

- A fully funded health, dental, vision package and short-term disability
- \$10,000 employer sponsored life insurance
- Elective life up to 100k guaranteed issue at sign on
- Employer sponsored retirement plan 401(a) with 150% matching funds
- Elective retirement plan 403(b) option
- 13 paid holidays
- 144 hours of paid vacation
- Longevity pay
- Potential end of year merit

Secretary III
Aransas Pass, TX
Monday – Friday 8am-5pm (flex)
\$1,971.00 Monthly
Posting: #2407
Closes: Until Filled



Coastal Plains Integrated Health is committed to providing a Trauma-informed environment for employees and the people we serve.

About our Organization:

Coastal Plains is a certified community behavioral health center (CCBHC). The center provides behavioral health services, primary health services, and substance use services to children and adults. We offer employees a strong benefit package which includes the above posted salary. Our philosophy is to take care of our employees so they can take care of the people we serve.

Secretary III Responsibilities:

The Secretary III performs routine secretarial tasks with limited latitude for decision-making in carrying out routine phases of the work, which includes running reports, data entry, editing and typing various types of documents, distributing mail, maintaining financials, completing intake/annual documentation and communicating (either face to face or by telephone) with the various members of the community represented by CPCC. The secretary performs other duties as assigned or appropriate to fulfill the needs of the center. This position is supervised by the Clerical Supervisor and the Rockport/Aransas Pass clinic Director.

MINIMUM QUALIFICATIONS:

- A high school diploma or GED certificate
- Some secretarial and clerical experience or training
- A valid class "C" Texas Driver's license, with a good driving record

PREFERRED REQUIREMENTS:

- Medical Records experience.
- Proficient in typing skills as evidenced by administered typing test (40 WPM).
- Excellent computer skills with knowledge of Microsoft Word and Excel. •
- Ability to work independently, and communicate efficiently with clients as well as other community professionals.
- Bilingual English/Spanish.

BENEFIT PACKAGE:

- A fully funded health, dental, vision package and short-term disability
- Pet Insurance
- \$10,000 employer sponsored life insurance
- Elective life up to 100k guaranteed issue at sign on
- Employer sponsored retirement plan 401(a) with 150% matching funds
- Elective retirement plan 403(b) option
- 14 paid holidays
- 156 hours of paid vacation
- Longevity pay
- Potential end of year merit