



Coastal Plains Integrated Health

200 Marriot Drive
P.O. Box 1336
Portland, Texas 78374
www.coastalplainsctr.org

Bulletin 1234

September 19, 2025 – September 26, 2025

Applications Accepted via our website www.coastalplainsctr.org. *If the position has a closing date, the Applications must be received by closing date to be eligible for consideration.* Resumes are **NOT ACCEPTED in lieu of an application. **We will not accept faxed applications.****

We are an Equal Opportunity/ADA/Affirmative Action Employer

Requirements:

Every person hired at Coastal Plains Integrated Health is considered an employee of the Center regardless of who made the offer of employment. Employment assignments may change due to budgetary, disciplinary, or administrative reasons. All changes in employment assignments will be handled in accordance with laws prohibiting any form of discrimination. All positions require the ability to work flexible hours and days as needed.

Positions requiring specific academic achievement and/or specific course attainment will require you to attach a copy of a transcript, certification and/or License to your application. All other positions will require verification of high school diploma or GED.

As per the Immigration Reform and Control Act of 1986 (§1200) all applicants for employment are required to provide documents that provide proof of employment authorization and identity. (Social Security Card, Driver's License, and (or) alternate documents as per regulations).

Criminal convictions involving personal injury, threat to another person, drug related offenses, etc., may make you ineligible for employment at Coastal Plains Integrated Health. Names of prospective employees are cleared through the Texas Department of Public Safety to determine the existence of such records. Falsification of the application for employment is grounds for dismissal, if employed.

For positions that require travel/driving, applicants must maintain a class "C" driver's license with a favorable driving record as evidenced by DPS Moving Violation report.

Coastal Plains Integrated Health is a DRUG FREE WORKPLACE. Effective August 1, 1996, before employment, all applicants are given a "conditional" offer of employment and will be required to take and pass a drug test. Physical assessment tests will be required for certain positions.

Effective July 1, 2002, all applicants for employment will be notified that prior to an offer of employment, they will be screened for previous confirmation of a class I confirmed incident or incidents of abuse or neglect against a consumer or consumers. Applicants with a confirmed history of abuse or neglect will not be considered for employment.

Rehab Caseworker/Case Manager III
Taft, TX
Monday-Friday 8-5 (Flex)
\$3,143.00-3,342.00 Monthly
Posting: #2416
Closes: Until Filled



Coastal Plains Integrated Health is committed to providing a Trauma-informed environment for employees and the people we serve.

About our Organization:

Coastal Plains is a certified community behavioral health center (CCBHC). The center provides behavioral health services, primary health services, and substance use services to children and adults. We offer employees a strong benefit package which includes the above posted salary. Our philosophy is to take care of our employees so they can take care of the people we serve.

Rehab Caseworker III/Case Manager Responsibilities:

Works with the Center's Youth and Adolescent program to help clients improve mental health symptoms by providing Case management, Rehabilitative Skills Training and support services. Works closely with other youth team members and community partners. Nature of work involves virtual care, and in-person contact with individuals and their caretaker at the office, school and/or home location. Job requires some clinical skills necessary for independent judgement. Job performance requires an automobile, and flexible hours to provide services. Works under the supervision of the Youth and Family Program Manager.

MINIMUM QUALIFICATIONS:

Bachelor's degree from an accredited college or university with a major in social, behavioral health, or human services. Salary is commensurate with education and experience per Coastal Plains career ladder. Must have a Class "C" Driver's License, and the ability to type 30wpm.

PREFERRED REQUIREMENTS:

- Knowledge of Microsoft office and basic computer skills
- The ability to type 50wpm
- Able to communicate orally in Spanish.
- One-year experience in MH Case Management/rehab skills training.
- One Year Experience working with youth, adolescents and families
- Master's degree in major of social, behavior health or human services.

BENEFIT PACKAGE:

- Free LPC-A supervision
- A fully funded health, dental, and short-term disability package
- Pet Insurance
- \$10,000 employer sponsored life insurance
- Elective life up to 100k guaranteed issue at sign on
- Employer sponsored retirement plan 401(a) with 150% matching funds
- Elective retirement plan 403(b) option
- 15 paid holidays
- 156 hours of paid vacation
- Loan forgiveness facility
- Longevity pay
- Potential end of year merit

Rehab Caseworker/Case Manager III
Taft, TX
Monday-Friday 8-5 (Flex)
\$3,143.00-3,342.00 Monthly
Posting: #2417
Closes: Until Filled



Coastal Plains Integrated Health is committed to providing a Trauma-informed environment for employees and the people we serve.

About our Organization:

Coastal Plains is a certified community behavioral health center (CCBHC). The center provides behavioral health services, primary health services, and substance use services to children and adults. We offer employees a strong benefit package which includes the above posted salary. Our philosophy is to take care of our employees so they can take care of the people we serve.

Rehab Caseworker III/Case Manager Responsibilities:

Works with the Center's Youth and Adolescent program to help clients improve mental health symptoms by providing Case management, Rehabilitative Skills Training and support services. Works closely with other youth team members and community partners. Nature of work involves virtual care, and in-person contact with individuals and their caretaker at the office, school and/or home location. Job requires some clinical skills necessary for independent judgement. Job performance requires an automobile, and flexible hours to provide services. Works under the supervision of the Youth and Family Program Manager.

MINIMUM QUALIFICATIONS:

Bachelor's degree from an accredited college or university with a major in social, behavioral health, or human services. Salary is commensurate with education and experience per Coastal Plains career ladder. Must have a Class "C" Driver's License, and the ability to type 30wpm.

PREFERRED REQUIREMENTS:

- Knowledge of Microsoft office and basic computer skills
- The ability to type 50wpm
- Able to communicate orally in Spanish.
- One-year experience in MH Case Management/rehab skills training.
- One Year Experience working with youth, adolescents and families
- Master's degree in major of social, behavior health or human services.

BENEFIT PACKAGE:

- Free LPC-A supervision
- A fully funded health, dental, and short-term disability package
- Pet Insurance
- \$10,000 employer sponsored life insurance
- Elective life up to 100k guaranteed issue at sign on
- Employer sponsored retirement plan 401(a) with 150% matching funds
- Elective retirement plan 403(b) option
- 15 paid holidays
- 156 hours of paid vacation
- Loan forgiveness facility
- Longevity pay
- Potential end of year merit

MH Case Manager III
Beeville, TX
Monday-Friday 8-5 (Flex)
\$3,143.00-3,342.00 Monthly
Posting: #2424
Closes: Until Filled



Coastal Plains Integrated Health is committed to providing a Trauma-informed environment for employees and the people we serve.

About our Organization:

Coastal Plains is a certified community behavioral health center (CCBHC). The center provides behavioral health services, primary health services, and substance use services to children and adults. We offer employees a strong benefit package which includes the above posted salary. Our philosophy is to take care of our employees so they can take care of the people we serve.

Case Manager III Responsibilities:

Works as a member of an integrated treatment team. Staff is responsible for providing rehabilitation, and support services to consumers identified with severe and persistent mental illness. Services provided to individuals in authorized service package include Pharmacological management services, and rehabilitation services. Nature of work requires frequent in-person, long-term contact with individuals, family members, and service providers. Job also requires staff to facilitate skills activities in a group or individual setting to clients served by CPIH. Works under the supervision of the Clinic Director or designee. Job requires high level of clinical skill necessary for independent judgment.

MINIMUM QUALIFICATIONS:

Bachelor's degree from an accredited college or university with a major in Social, Behavioral Health, or Human Services. Must have a valid Class C Texas Driver's license with evidence of a good driving record, and the ability to type 30wpm.

PREFERRED REQUIREMENTS:

- Minimum proficiency with computer software as demonstrated by knowledge of Microsoft Applications.
- The ability to type 50wpm
- Lives within service area.
- Excellent verbal and written communication skills as demonstrated by oral and written interview.
- Ability to communicate in Spanish.
- Experience working with this target population (adults and children) who are experiencing crisis situations.

BENEFIT PACKAGE:

- Free LPC-A supervision
- A fully funded health, dental, and short-term disability package
- Pet Insurance
- \$10,000 employer sponsored life insurance
- Elective life up to 100k guaranteed issue at sign on
- Employer sponsored retirement plan 401(a) with 150% matching funds
- Elective retirement plan 403(b) option
- 15 paid holidays
- 156 hours of paid vacation
- Loan forgiveness facility
- Longevity pay
- Potential end of year merit

Rehab Caseworker/Case Manager III
Aransas Pass, TX
Monday-Friday 8-5 (Flex)
\$3,143.00-3,342.00 Monthly
Posting: #2429
Closes: Until Filled



Coastal Plains Integrated Health is committed to providing a Trauma-informed environment for employees and the people we serve.

About our Organization:

Coastal Plains is a certified community behavioral health center (CCBHC). The center provides behavioral health services, primary health services, and substance use services to children and adults. We offer employees a strong benefit package which includes the above posted salary. Our philosophy is to take care of our employees so they can take care of the people we serve.

Rehab Caseworker III/Case Manager Responsibilities:

Works as a member of an integrated treatment team. Staff is responsible for providing rehabilitation, Crisis services and support services, to Adult consumers identified with severe and persistent mental illness. Services provided to individuals in authorized level of care include Pharmacological management services, and rehabilitation services. Nature of work requires frequent in-person, long-term contact with individuals, family members, and service providers. Job performance requires an automobile, extensive travel, and flexible hours to provide services. Job also requires staff to facilitate skills activities in a group or individual setting to clients served by Coastal Plains Integrated Health. Works under the supervision of the Rockport/Aransas Pass Clinic Director. Job requires high level of clinical skills necessary for independent judgment.

MINIMUM QUALIFICATIONS:

A Bachelor's Degree from an accredited college or university with a major in Social or Behavioral Health which is defined as psychology, social work, medicine, nursing, rehabilitation, counseling, sociology, human growth and development, physician assistant, gerontology, special education, educational psychology, early childhood education, or early childhood intervention. Salary is commensurate with education and experience per Coastal Plains' career ladder. Class C operator's license with evidence of a good driving record, and the ability to type 30wpm.

PREFERRED REQUIREMENTS:

- Knowledge of Microsoft office and basic computer skills as demonstrated by a performance exam.
- The ability to type 50wpm
- Able to communicate orally in Spanish.
- Master's Degree.
- One-year experience in adult MH case management/rehab skills training.
- Demonstrates knowledge of local support services available in Aransas and San Patricio County

BENEFIT PACKAGE:

- Free LPC-A supervision
- A fully funded health, dental, and short-term disability package
- Pet Insurance
- \$10,000 employer sponsored life insurance
- Elective life up to 100k guaranteed issue at sign on
- Employer sponsored retirement plan 401(a) with 150% matching funds
- Elective retirement plan 403(b) option
- 15 paid holidays
- 156 hours of paid vacation
- Loan forgiveness facility
- Longevity pay

Rehab Caseworker/Case Manager III
Rockport, TX
Monday-Friday 8-5 (Flex)
\$3,143.00-3,342.00 Monthly
Posting: #2430
Closes: Until Filled



Coastal Plains Integrated Health is committed to providing a Trauma-informed environment for employees and the people we serve.

About our Organization:

Coastal Plains is a certified community behavioral health center (CCBHC). The center provides behavioral health services, primary health services, and substance use services to children and adults. We offer employees a strong benefit package which includes the above posted salary. Our philosophy is to take care of our employees so they can take care of the people we serve.

Rehab Caseworker III/Case Manager Responsibilities:

Works as a member of an integrated treatment team. Staff is responsible for providing rehabilitation, Crisis services and support services, to Adult consumers identified with severe and persistent mental illness. Services provided to individuals in authorized level of care include Pharmacological management services, and rehabilitation services. Nature of work requires frequent in-person, long-term contact with individuals, family members, and service providers. Job performance requires an automobile, extensive travel, and flexible hours to provide services. Job also requires staff to facilitate skills activities in a group or individual setting to clients served by Coastal Plains Integrated Health. Works under the supervision of the Rockport/Aransas Pass Clinic Director. Job requires high level of clinical skills necessary for independent judgment.

MINIMUM QUALIFICATIONS:

A Bachelor's Degree from an accredited college or university with a major in Social or Behavioral Health which is defined as psychology, social work, medicine, nursing, rehabilitation, counseling, sociology, human growth and development, physician assistant, gerontology, special education, educational psychology, early childhood education, or early childhood intervention. Salary is commensurate with education and experience per Coastal Plains' career ladder. Class C operator's license with evidence of a good driving record, and the ability to type 30wpm.

PREFERRED REQUIREMENTS:

- Knowledge of Microsoft office and basic computer skills as demonstrated by a performance exam.
- The ability to type 50wpm
- Able to communicate orally in Spanish.
- Master's Degree.
- One-year experience in adult MH case management/rehab skills training.
- Demonstrates knowledge of local support services available in Aransas and San Patricio County

BENEFIT PACKAGE:

- Free LPC-A supervision
- A fully funded health, dental, and short-term disability package
- Pet Insurance
- \$10,000 employer sponsored life insurance
- Elective life up to 100k guaranteed issue at sign on
- Employer sponsored retirement plan 401(a) with 150% matching funds
- Elective retirement plan 403(b) option
- 15 paid holidays
- 156 hours of paid vacation
- Loan forgiveness facility
- Longevity pay
- Potential end of year merit

TCOOMMI Adult Case Manager III
Alice, TX
Monday-Friday 8-5 (Flex)
\$3,790.00 Monthly
Posting: #2431
Closes: Until Filled



Coastal Plains Integrated Health is committed to providing a Trauma-informed environment for employees and the people we serve.

About our Organization:

Coastal Plains is a certified community behavioral health center (CCBHC). The center provides behavioral health services, primary health services, and substance use services to children and adults. We offer employees a strong benefit package which includes the above posted salary. Our philosophy is to take care of our employees so they can take care of the people we serve.

TCOOMMI Adult Case Manager Responsibilities:

This position provides intensive Case Management services to offenders with severe and persistent mental illness who are also being supervised by adult probation. This position maintains an active cooperative working relationship with the Criminal Justice partners and acts as liaison between offenders and supervising officer. Case Management services consist of linking consumers to medical, social, education and other resources to meet their needs. Provides skills training that focus on positive outcomes with reduction in symptoms: the goal is reducing the recidivism rate. Work is community and site based. The job requires travel for community-based services, and provision of flexible schedule. Will report to the TCOOMMI Program Director.

MINIMUM QUALIFICATIONS:

A Bachelor's Degree from an accredited college or university with a major in Social or Behavioral Health or Human Services. Salary is commensurate with education and experience per Coastal Plains' career ladder. Applicant must be able to pass the Texas Department of Criminal Justice Pre-Employment TCIS/NCIC background check. Class C operator's license with evidence of a good driving record, and the ability to type 30wpm.

PREFERRED REQUIREMENTS:

- Knowledge of Microsoft office and basic computer skills and type 50wpm
- Master's Degree in Major of Social, Behavior Health or Human Services.
- One-year experience in adult MH case management/rehab skills training.
- Maintain Class "C" license with less than 10 penalty points.
- One year experience working with person's diagnosed with a mental illness.

BENEFIT PACKAGE:

- Free LPC-A supervision
- A fully funded health, dental, and short-term disability package
- Pet Insurance
- \$10,000 employer sponsored life insurance
- Elective life up to 100k guaranteed issue at sign on
- Employer sponsored retirement plan 401(a) with 150% matching funds
- Elective retirement plan 403(b) option
- 15 paid holidays
- 156 hours of paid vacation
- Loan forgiveness facility
- Longevity pay
- Potential end of year merit

Youth Case Manager III
Alice, TX
Monday-Friday 8-5 (Flex)
\$3,143.00-3,342.00 Monthly
Posting: #2433
Closes: Until Filled



Coastal Plains Integrated Health is committed to providing a Trauma-informed environment for employees and the people we serve.

About our Organization:

Coastal Plains is a certified community behavioral health center (CCBHC). The center provides behavioral health services, primary health services, and substance use services to children and adults. We offer employees a strong benefit package which includes the above posted salary. Our philosophy is to take care of our employees so they can take care of the people we serve.

Youth Case Manager III Responsibilities:

Works as a member of an integrated treatment team. Staff is responsible for providing rehabilitation and support services to consumers identified with severe and persistent mental illness. Services provided to individuals in authorized service package include Pharmacological management services, and rehabilitation services. Nature of work requires frequent in-person, long-term contact with individuals, family members, and service providers. Job also requires staff to facilitate skills activities in a group or individual setting to clients served by Coastal Plains Integrated Health. Works under the supervision of the Clinic Director. Job requires high level of clinical skills necessary for independent judgment.

MINIMUM QUALIFICATIONS:

A Bachelor's Degree from an accredited college or university with a major in Social or Behavioral Health, or Human Services. Salary is commensurate with education and experience per Coastal Plains' career ladder. Class C operator's license with evidence of a good driving record and the ability to type 30wpm.

PREFERRED REQUIREMENTS:

- Knowledge of Microsoft office and basic computer skills as demonstrated by a performance exam.
- Ability to type 50wpm
- Able to communicate orally in Spanish.
- Ability to work independently and organize work efficiently.
- Bilingual (English and Spanish)
- Master's Degree.

BENEFIT PACKAGE:

- Free LPC-A supervision
- A fully funded health, dental, and short-term disability package
- Pet Insurance
- \$10,000 employer sponsored life insurance
- Elective life up to 100k guaranteed issue at sign on
- Employer sponsored retirement plan 401(a) with 150% matching funds
- Elective retirement plan 403(b) option
- 15 paid holidays
- 156 hours of paid vacation
- Loan forgiveness facility
- Longevity pay
- Potential end of year merit

Jail Diversion Specialist CM III
Alice, TX
Monday-Friday 8-5 (Flex)
\$3,143.00-3,342.00 Monthly
Posting: #2434
Closes: Until Filled



Coastal Plains Integrated Health is committed to providing a Trauma-informed environment for employees and the people we serve.

About our Organization:

Coastal Plains is a certified community behavioral health center (CCBHC). The center provides behavioral health services, primary health services, and substance use services to children and adults. We offer employees a strong benefit package which includes the above posted salary. Our philosophy is to take care of our employees so they can take care of the people we serve.

Jail Diversion Specialist Case Manager III Responsibilities:

Works as a member of an integrated treatment team. Staff is responsible for providing rehabilitation and support services to consumers identified with severe and persistent mental illness. Services provided to individuals in authorized service package include Pharmacological management services, and rehabilitation services. Nature of work requires frequent in-person, long-term contact with individuals, family members, and service providers. Job also requires staff to facilitate skills activities to individuals incarcerated in Jim Wells county jail. Works under the supervision of the Clinic Director. Job requires high level of clinical skills necessary for independent judgment.

MINIMUM QUALIFICATIONS:

A Bachelor's Degree from an accredited college or university with a major in Social or Behavioral Health, or Human Services. Salary is commensurate with education and experience per Coastal Plains' career ladder. Class C operator's license with evidence of a good driving record and the ability to type 30wpm.

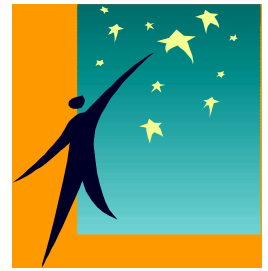
PREFERRED REQUIREMENTS:

- Knowledge of Microsoft office and basic computer skills as demonstrated by a performance exam.
- Ability to type 50wpm
- Able to communicate orally in Spanish.
- Ability to work independently and organize work efficiently.
- Bilingual (English and Spanish)
- Master's Degree.

BENEFIT PACKAGE:

- Free LPC-A supervision
- A fully funded health, dental, and short-term disability package
- Pet Insurance
- \$10,000 employer sponsored life insurance
- Elective life up to 100k guaranteed issue at sign on
- Employer sponsored retirement plan 401(a) with 150% matching funds
- Elective retirement plan 403(b) option
- 15 paid holidays
- 156 hours of paid vacation
- Loan forgiveness facility
- Longevity pay
- Potential end of year merit

Case Manager III/Intake Screener
Aransas Pass, TX
Monday-Friday 8-5 (Flex)
\$3,342.00 Monthly
Posting: #2435
Closes: Until Filled



Coastal Plains Integrated Health is committed to providing a Trauma-informed environment for employees and the people we serve.

About our Organization:

Coastal Plains is a certified community behavioral health center (CCBHC). The center provides behavioral health services, primary health services, and substance use services to children and adults. We offer employees a strong benefit package which includes the above posted salary. Our philosophy is to take care of our employees so they can take care of the people we serve.

Case Manager III/Intake Screener Responsibilities:

Screener telephonically screens all calls from individuals requesting mental health services to determine eligibility for Early Onset services, then coordinates intakes for eligible callers at the earliest and most convenient time. Makes referrals as needed for those callers not eligible for CPCC services. Works under the supervision of the Clinic Director or designee.

MINIMUM QUALIFICATIONS:

A Bachelor's Degree from an accredited college or university with a major in Social or Behavioral Health which is defined as psychology, social work, medicine, nursing, rehabilitation, counseling, sociology, human growth and development, physician assistant, gerontology, special education, educational psychology, early childhood education, or early childhood intervention. Salary is commensurate with education and experience per Coastal Plains career ladder. Class C operator's license with evidence of a good driving record, and ability to type 30wpm

PREFERRED REQUIREMENTS:

- Ability to assess individual and their psychiatric symptoms to determine eligibility for mental health services according to guidelines established by the State of Texas.
- Knowledge of signs and symptoms associated with diagnoses related to schizophrenia, major depressive disorder, and bipolar disorder.
- Knowledge of local community resources and how to access those services.
- Ability to type 50wpm
- Minimum proficiency with computer software as demonstrated by knowledge of Microsoft Applications2
- Excellent verbal and written communication skills as demonstrated by oral and written interview
- Is able to communicate in Spanish

BENEFIT PACKAGE:

- Free LPC-A supervision
- A fully funded health, dental, and short-term disability package
- Pet Insurance
- \$10,000 employer sponsored life insurance
- Elective life up to 100k guaranteed issue at sign on
- Employer sponsored retirement plan 401(a) with 150% matching funds
- Elective retirement plan 403(b) option
- 15 paid holidays
- 156 hours of paid vacation
- Loan forgiveness facility
- Longevity pay
- Potential end of year merit

EO Case Manager III
Kingsville, TX
Monday-Friday 8-5 (Flex)
\$3,342.00 Monthly
Posting: #2436
Closes: Until Filled



Coastal Plains Integrated Health is committed to providing a Trauma-informed environment for employees and the people we serve.

About our Organization:

Coastal Plains is a certified community behavioral health center (CCBHC). The center provides behavioral health services, primary health services, and substance use services to children and adults. We offer employees a strong benefit package which includes the above posted salary. Our philosophy is to take care of our employees so they can take care of the people we serve.

EO Case Manager III Responsibilities:

Works as a member of the Coordinated Specialty Care (Early Onset) team. Staff is responsible for providing rehabilitation, Crisis services and support services, to consumers aged 15 to 30 with severe and persistent mental illness in the home, school, community or office setting. Services provided to individuals in authorized level of care include Pharmacological management services, and rehabilitation services. Nature of work requires frequent in-person, long-term contact with individuals, family members, and service providers. Job performance requires an automobile, extensive travel, and flexible hours to provide services and may occasionally transport consumers. Job also requires staff to facilitate skills activities in a group or individual setting to clients served by Coastal Plains Integrated Health. Works under the supervision of the program's Clinical Supervisor or designee. Job requires high level of clinical skills necessary for independent judgment. Will work directly with treatment team for clients who have experienced a First Episodic Break.

MINIMUM QUALIFICATIONS:

Bachelor's degree from an accredited college or university with a major in social, behavioral health, or human services. Class "C" operator's license with evidence of a good driving record, and the ability to type 30wpm.

PREFERRED REQUIREMENTS:

- Knowledge of the needs and characteristics associated with the target population.
- Proficient computer skills to perform job functions and ability to type 50 wpm.
- Ability to communicate effectively both orally and in writing.
- Knowledge of local community resources and how to access those services.
- Ability to demonstrate knowledge on the importance of productivity, time management, and organizational skills.
- Ability to establish a therapeutic relationship with consumers and their support system and to set and maintain boundaries.
- Ability to maintain a Class C license with less than ten (10) penalty points.

BENEFIT PACKAGE:

- Free LPC-A supervision
- A fully funded health, dental, and short-term disability package
- Pet Insurance
- \$10,000 employer sponsored life insurance
- Elective life up to 100k guaranteed issue at sign on
- Employer sponsored retirement plan 401(a) with 150% matching funds
- Elective retirement plan 403(b) option
- 15 paid holidays
- 156 hours of paid vacation
- Loan forgiveness facility
- Longevity pay
- Potential end of year merit

Data Management & Analysis Assistant
Portland, TX
Monday-Friday 8-5 (Flex)
\$3,342.00-\$4,037.60 Monthly
Posting: #2437
Closes: Until Filled



Coastal Plains Integrated Health is committed to providing a Trauma-informed environment for employees and the people we serve.

About our Organization:

Coastal Plains is a certified community behavioral health center (CCBHC). The center provides behavioral health services, primary health services, and substance use services to children and adults. We offer employees a strong benefit package which includes the above posted salary. Our philosophy is to take care of our employees so they can take care of the people we serve.

Data Management & Analysis Assistant Responsibilities:

This position provides first level help desk support to Coastal Plains employees experiencing computer/network/data related problems with limited latitude for the use of initiative and independent judgement. This position:

- trains staff in computer usage and the use of Millennium medical record
- develops training materials as needed
- runs and develops clinical reports
- ensures that TRR assessments are correctly entered in CMBHS
- assists the IT staff in troubleshooting network problems
- assists the team to configure/update the medical record as needed
- uses Microsoft Excel to create complex reports for management

This position requires good customer relations skills, moderately complex problem-solving skills and troubleshooting abilities. Maintains confidentiality related to consumer and employee information. Reports to the Director of Authority Functions.

MINIMUM QUALIFICATIONS:

Systems Analyst I – Associates degree from an accredited college or university with a major in a field related to the position, plus 3 years of experience relevant to the duties to be performed.

System Analyst II – Bachelor's degree in Computer Science from an accredited college or university with a major in a field related to the position, plus 1 year of experience relevant to the duties to be performed.

Program Admin I - A Bachelor's degree from an accredited college or university with a major in a field related to the position, plus 2 – 4 years of experience relevant to the duties to be performed.

PREFERRED REQUIREMENTS:

- Excellent computer skills, specifically in Microsoft software (Word, Excel)
- Experience with computer networks, Citrix/Terminal Servers
- Extensive experience in the management and use of spreadsheets, charts and graphs
- Knowledge of clinical and billing aspects of MHMR services
- Extensive experience with clinical software, specifically Anasazi/Millennium
- Ability to organize and prioritize a variety of assignments and to manage time effectively
- Ability to understand and apply complex regulatory guidelines and procedures
- Ability to present and develop effective written and oral training sessions
- Ability to maintain class C operator's license with a good driving record

BENEFIT PACKAGE:

- A fully funded health, dental, and short-term disability package
- Pet Insurance
- \$10,000 employer sponsored life insurance
- Elective life up to 100k guaranteed issue at sign on
- Employer sponsored retirement plan 401(a) with 150% matching funds
- Elective retirement plan 403(b) option
- 15 paid holidays
- 156 hours of paid vacation
- Longevity pay
- Loan forgiveness facility
- Potential end of year merit

Psychiatric Nurse Practitioner
Kingsville, TX
Monday-Friday 8-5 (Flex)
\$ 10,500 Monthly
Posting: #2438
Closes: Until Filled



Coastal Plains Integrated Health is committed to providing a Trauma-informed environment for employees and the people we serve.

About our Organization:

Coastal Plains is a certified community behavioral health center (CCBHC). The center provides behavioral health services, primary health services, and substance use services to children and adults. We offer employees a strong benefit package which includes the above posted salary. Our philosophy is to take care of our employees so they can take care of the people we serve.

Psychiatric Nurse Practitioner Responsibilities:

This position is responsible for handling patient appointments and performing routine examinations to ensure patient psychiatric health. The duties involve speaking with patients re: their symptoms, completing initial diagnostic evaluations, and follow-ups. This position will prescribe medications and assist with educating patients on prescribed medications and injections. The nurse practitioner would also be coordinating with other healthcare professionals to ensure referrals are being made when appropriate. This position will work closely with the Director of Nursing and the Center's Medical Director to assist with daily clinic operations. Will assist the DON with development of medical policies and procedures. This position will perform health care procedures and monitor health conditions of individuals opened to care with the Center. This position will report to the Center's CEO and work clinically under the Center's Medical Director.

MINIMUM QUALIFICATIONS:

A master's degree in the field of Nursing plus four (4) years of experience related to the duties to be performed. Applicant must also be Board Certified as a Nurse Practitioner in the state of Texas. Must have a valid Texas class C driver's license, the ability to type 35 words per minute.

PREFERRED REQUIREMENTS:

- Experience with providing medical services in an LMHA outpatient setting.
- Experience in providing training to licensed medical staff.
- Experience in behavioral health case management services.
- Board Certified Psychiatric Mental Health Nurse Practitioner (PMHNP)
- Ability to type 50wpm

BENEFIT PACKAGE:

- A fully funded health, dental, and short-term disability package
- Pet Insurance
- \$10,000 employer sponsored life insurance
- Elective life up to 100k guaranteed issue at sign on
- Employer sponsored retirement plan 401(a) with 150% matching funds
- Elective retirement plan 403(b) option
- 15 paid holidays
- 156 hours of paid vacation
- Loan forgiveness facility
- Longevity pay
- Potential end of year merit

MH Crisis Worker II-III
Beeville, TX
Monday-Friday 8-5 (Flex)
\$3,342.00 Monthly
Posting: #2439
Closes: Until Filled



Coastal Plains Integrated Health is committed to providing a Trauma-informed environment for employees and the people we serve.

About our Organization:

Coastal Plains is a certified community behavioral health center (CCBHC). The center provides behavioral health services, primary health services, and substance use services to children and adults. We offer employees a strong benefit package which includes the above posted salary. Our philosophy is to take care of our employees so they can take care of the people we serve.

MH Crisis Worker II-III Responsibilities:

This position will provide crisis care services to Bee and Live Oak Counties. Other duties to be provided will be screenings, post hospital follow-ups, crisis follow-up, assessments and maintain contact with inpatient psychiatric facilities. Position will assist with collecting data and completing reports for HHSC outcomes. This position will also maintain a small intensive caseload. Crisis worker will provide aggressive interventions and frequent in-person contact with individuals and their families, by providing on-going Rehabilitative and Case management services for adults and children with a mental health diagnosis. Case management services consists of gaining access to medical, social, educational and other unmet needs. Rehabilitative services focus on positive outcomes with reduction in symptoms, increase in level of functioning through skills training. Work is community and site based. Works under limited supervision with considerable latitude for the use of initiative and independent judgment. Schedule is flexible and this position will report to the Beeville Clinic Director.

MINIMUM QUALIFICATIONS:

Bachelor's degree from an accredited college or university with a major in Social, Behavioral Health, or Human Services. Must have a valid Tx Driver's License, and the ability to type 30wpm.

PREFERRED REQUIREMENTS:

- Knowledge of Microsoft office and basic computer skills
- The ability to type 50wpm
- Lives within service area.
- Master's degree.
- Excellent verbal and written communication skills as demonstrated by oral and written interview.
- Ability to communicate in Spanish.
- Experience working with this target population (adults and children) who are experiencing crisis situations.
- Ability to type at minimum 50 words per minute

BENEFIT PACKAGE:

- Free LPC-A supervision
- A fully funded health, dental, and short-term disability package
- Pet Insurance
- \$10,000 employer sponsored life insurance
- Elective life up to 100k guaranteed issue at sign on
- Employer sponsored retirement plan 401(a) with 150% matching funds
- Elective retirement plan 403(b) option
- 15 paid holidays
- Loan forgiveness facility
- 156 hours of paid vacation
- Longevity pay
- Potential end of year merit

Transporter
Rockport, TX
Monday-Friday 8-5 (Flex)
\$2,100.00 Monthly
Posting: #2440
Closes: Until Filled



Coastal Plains Integrated Health is committed to providing a Trauma-informed environment for employees and the people we serve.

About our Organization:

Coastal Plains is a certified community behavioral health center (CCBHC). The center provides behavioral health services, primary health services, and substance use services to children and adults. We offer employees a strong benefit package which includes the above posted salary. Our philosophy is to take care of our employees so they can take care of the people we serve.

Transporter Responsibilities:

Work involves providing transportation to both Adults and Children who are receiving services at the Center; with occasional transportation throughout the state of Texas. Staff will be expected to observe and report client conditions and behavior and will interact with clients therapeutically. This position is also responsible for keeping the vehicles assigned to the clinic maintained according to the center's maintenance schedule. Works with minimal supervision, utilizing personal judgment to ensure clients transporting needs are met. This position reports to the Clinic Director or designee. Other duties as assigned.

MINIMUM QUALIFICATIONS:

High School Diploma or GED certificate. Current Class C operator's license with a good driving record as evidenced by verification of driving record through DPS.

PREFERRED REQUIREMENTS:

- Knowledge of motor vehicle operations, or passenger loading and unloading methods, traffic regulation, and of the maintenance of motor vehicles.
- Ability to follow schedules, instructions in operating vehicles, and practices in loading and unloading.
- Knowledge of individual needs/characteristics associated with disabilities.
- Knowledge of vehicle scheduled maintenance and ability to monitor maintenance needs.

BENEFIT PACKAGE:

- A fully funded health, dental, and short-term disability package
- Pet Insurance
- \$10,000 employer sponsored life insurance
- Elective life up to 100k guaranteed issue at sign on
- Employer sponsored retirement plan 401(a) with 150% matching funds
- Elective retirement plan 403(b) option
- 15 paid holidays
- 156 hours of paid vacation
- Loan forgiveness facility
- Longevity pay
- Potential end of year merit

Jail Diversion Specialist III/Case Manager IV
George West, TX
Monday-Friday 8-5 (Flex)
\$3,672.00 Monthly
Posting: #2441
Closes: Until Filled



Coastal Plains Integrated Health is committed to providing a Trauma-informed environment for employees and the people we serve.

About our Organization:

Coastal Plains is a certified community behavioral health center (CCBHC). The center provides behavioral health services, primary health services, and substance use services to children and adults. We offer employees a strong benefit package which includes the above posted salary. Our philosophy is to take care of our employees so they can take care of the people we serve.

Jail Diversion Specialist III III/Case Manager IV Responsibilities:

Works as a member of an integrated treatment team. Staff is responsible for providing rehabilitation, Crisis services and support services, to Adult inmates identified with severe and persistent mental illness who are involved in the criminal justice system. Services provided to individuals in authorized level of care include crisis services and rehabilitation services. Nature of work requires frequent in-person contact with individuals incarcerated at Live Oak County Jail. Job performance requires an automobile, some travel, and flexible hours to provide services. Works under the supervision of the Beeville Clinic Director or designee. Job requires high level of clinical skills necessary for independent judgment.

MINIMUM QUALIFICATIONS:

Master's degree from an accredited college or university with a major in social, behavioral health, or human services. Salary is commensurate with education and experience per Coastal Plains career ladder. Must Maintain Class "C" license with less than 10 penalty points and ability to type 30wpm.

PREFERRED REQUIREMENTS:

- Knowledge of Microsoft office and basic computer skills.
- Ability to type 50wpm
- Able to communicate orally in Spanish.
- One-year experience working with MH patients in an outpatient setting.
- Lives within a 30-minute commute from Live Oak County Jail.
- Licensed Professional Counselor Associate.

BENEFIT PACKAGE:

- A fully funded health, dental, and short-term disability package
- Pet Insurance
- \$10,000 employer sponsored life insurance
- Elective life up to 100k guaranteed issue at sign on
- Employer sponsored retirement plan 401(a) with 150% matching funds
- Elective retirement plan 403(b) option
- 15 paid holidays
- 156 hours of paid vacation
- Loan forgiveness facility
- Longevity pay
- Potential end of year merit