



Coastal Plains Integrated Health

200 Marriot Drive
P.O. Box 1336
Portland, Texas 78374
www.coastalplainsctr.org

Bulletin 1271

May 15, 2026 – May 22, 2026

Applications Accepted via our website www.coastalplainsctr.org. *If the position has a closing date, the Applications must be received by closing date to be eligible for consideration.* Resumes are **NOT ACCEPTED in lieu of an application. **We will not accept faxed applications.****

We are an Equal Opportunity/ADA/Affirmative Action Employer

Requirements:

Every person hired at Coastal Plains Integrated Health is considered an employee of the Center regardless of who made the offer of employment. Employment assignments may change due to budgetary, disciplinary, or administrative reasons. All changes in employment assignments will be handled in accordance with laws prohibiting any form of discrimination. All positions require the ability to work flexible hours and days as needed.

Positions requiring specific academic achievement and/or specific course attainment will require you to attach a copy of a transcript, certification and/or License to your application. All other positions will require verification of high school diploma or GED.

As per the Immigration Reform and Control Act of 1986 (§1200) all applicants for employment are required to provide documents that provide proof of employment authorization and identity. (Social Security Card, Driver's License, and (or) alternate documents as per regulations).

Criminal convictions involving personal injury, threat to another person, drug related offenses, etc., may make you ineligible for employment at Coastal Plains Integrated Health. Names of prospective employees are cleared through the Texas Department of Public Safety to determine the existence of such records. Falsification of the application for employment is grounds for dismissal, if employed.

For positions that require travel/driving, applicants must maintain a class "C" driver's license with a favorable driving record as evidenced by DPS Moving Violation report.

Coastal Plains Integrated Health is a DRUG FREE WORKPLACE. Effective August 1, 1996, before employment, all applicants are given a "conditional" offer of employment and will be required to take and pass a drug test. Physical assessment tests will be required for certain positions.

Effective July 1, 2002, all applicants for employment will be notified that prior to an offer of employment, they will be screened for previous confirmation of a class I confirmed incident or incidents of abuse or neglect against a consumer or consumers. Applicants with a confirmed history of abuse or neglect will not be considered for employment.

Rehab Caseworker/Case Manager III
Beeville, TX
Monday-Friday 8-5 (Flex)
\$3,143.00-3,342.00 Monthly
Posting: #2447
Closes: Until Filled



Coastal Plains Integrated Health is committed to providing a Trauma-informed environment for employees and the people we serve.

About our Organization:

Coastal Plains is a certified community behavioral health center (CCBHC). The center provides behavioral health services, primary health services, and substance use services to children and adults. We offer employees a strong benefit package which includes the above posted salary. Our philosophy is to take care of our employees so they can take care of the people we serve.

Rehab Caseworker III/Case Manager Responsibilities:

Works with the Center's Youth and Adolescent program to help clients improve mental health symptoms by providing Case management, Rehabilitative Skills Training and support services. Works closely with other youth team members and community partners. Nature of work involves virtual care, and in-person contact with individuals and their caretaker at the office, school and/or home location. Job requires some clinical skills necessary for independent judgement. Job performance requires an automobile, and flexible hours to provide services. Works under the supervision of the Youth and Family Program Manager.

MINIMUM QUALIFICATIONS:

Bachelor's degree from an accredited college or university with a major in social, behavioral health, or human services. Applicants with a major in another field will be considered for an interview if there is at least twenty-four hours (24) of course work in Social, Behavioral Health, or Human services. Salary is commensurate with education and experience per Coastal Plains career ladder. Must have a Class "C" Driver's License, and the ability to type 30wpm.

PREFERRED REQUIREMENTS:

- Knowledge of Microsoft office and basic computer skills
- The ability to type 50wpm
- Able to communicate orally in Spanish.
- One-year experience in MH Case Management/rehab skills training.
- One Year Experience working with youth, adolescents and families
- Master's degree in major of social, behavior health or human services.

BENEFIT PACKAGE:

- Free LPC-A supervision
- A fully funded health, dental, and short-term disability package
- Pet Insurance
- \$10,000 employer sponsored life insurance
- Elective life up to 100k guaranteed issue at sign on
- Employer sponsored retirement plan 401(a) with 150% matching funds
- Elective retirement plan 403(b) option
- 15 paid holidays
- 156 hours of paid vacation
- Loan forgiveness facility
- Longevity pay
- Potential end of year merit

Case Manager III
Taft, TX
Monday-Friday 8-5 (Flex)
\$3,143.00-\$3,342.00 Monthly
Posting: #2449
Closes: Until Filled



Coastal Plains Integrated Health is committed to providing a Trauma-informed environment for employees and the people we serve.

About our Organization:

Coastal Plains is a certified community behavioral health center (CCBHC). The center provides behavioral health services, primary health services, and substance use services to children and adults. We offer employees a strong benefit package which includes the above posted salary. Our philosophy is to take care of our employees so they can take care of the people we serve.

Case Manager III Responsibilities:

Works as a member of an integrated treatment team. Staff is responsible for providing rehabilitation, crisis services and support services to adult consumers identified with severe and persistent mental illness. Services provided to individuals in authorized level of care include pharmacological management services, and rehabilitation services. Nature of work requires frequent in-person, long-term contact with individuals, family members, and service providers. Job performance requires an automobile, extensive travel, and flexible hours to provide services. Job also requires staff to facilitate skills activities in a group or individual setting to clients served by Coastal Plains Community Center. Works under the supervision of the Clinic Director or designee. Job requires high level of clinical skills necessary for independent judgment.

MINIMUM QUALIFICATIONS:

A Bachelor's Degree from an accredited college or university with a major in Social or Behavioral Health which is defined as psychology, social work, medicine, nursing, rehabilitation, counseling, sociology, human growth and development, physician assistant, gerontology, special education, educational psychology, early childhood education, or early childhood intervention. Applicants with a major in another field will be considered for an interview if there is at least twenty-four hours (24) of course work in Social, Behavioral Health, or Human services. Salary is commensurate with education and experience per Coastal Plains career ladder. Class C operator's license with evidence of a good driving record and the ability to type 30wpm.

PREFERRED REQUIREMENTS:

- Knowledge of nursing standards both state and HCS.
- Ability to perform focused nursing assessments
- Ability to provide teaching & over-site to non-licensed paid staff who provide delegated nursing care to Consumers
- Ability to clearly communicate to both staff and consumers
- Ability to utilize computer-based data base for documentation
- Type a minimum of 50 WPM

BENEFIT PACKAGE:

- Free LPC-A supervision
- A fully funded health, dental, and short-term disability package
- Pet Insurance
- \$10,000 employer sponsored life insurance
- Elective life up to 100k guaranteed issue at sign on
- Employer sponsored retirement plan 401(a) with 150% matching funds
- Elective retirement plan 403(b) option
- 15 paid holidays
- 156 hours of paid vacation
- Loan forgiveness facility
- Longevity pay
- Potential end of year merit

LVN II
Portland, TX
Monday-Friday 8-5 (Flex)
\$3,283.00 Monthly
Posting: #2468
Closes: Until Filled



Coastal Plains Integrated Health is committed to providing a Trauma-informed environment for employees and the people we serve.

About our Organization:

Coastal Plains is a certified community behavioral health center (CCBHC). The center provides behavioral health services, primary health services, and substance use services to children and adults. We offer employees a strong benefit package which includes the above posted salary. Our philosophy is to take care of our employees so they can take care of the people we serve.

LVN II Responsibilities:

The position of Licensed Vocational Nurse is designated to ensure the effective and efficient delivery of nursing services to IDD consumers of Coastal Plains Integrated Health. The LVN is responsible for providing nursing care and treatment, and monitoring and assisting individuals in all areas of health. The LVN participates as a member of the interdisciplinary team, complies with HCS health related principles, including training and education of staff and consumers. Also responsible for on-call phone consults from group home on nights and weekends. Completes quarterly reports and annual nursing summaries. Ensures timely entry of documentation. This position reports directly to the IDD RN Supervisor for IDD services.

MINIMUM QUALIFICATIONS:

Current and valid license to practice as an LVN in the State of Texas Current and valid Texas type "C" driver's license. One year of experience or related experience as an LVN serving an IDD population and ability to type 30wpm.

PREFERRED REQUIREMENTS:

- Knowledge of nursing standards both state and HCS.
- Ability to perform focused nursing assessments
- Ability to provide teaching and over-site to non-licensed paid staff who provide delegated nursing care to Consumers
- Ability to clearly communicate to both staff and consumers
- Ability to utilize computer-based data base for documentation
- Type a minimum of 50 WPM

BENEFIT PACKAGE:

- A fully funded health, dental, and short-term disability package
- Pet Insurance
- \$10,000 employer sponsored life insurance
- Elective life up to 100k guaranteed issue at sign on
- Employer sponsored retirement plan 401(a) with 150% matching funds
- Elective retirement plan 403(b) option
- 15 paid holidays
- 156 hours of paid vacation
- Loan forgiveness facility
- Longevity pay
- Potential end of year merit

Adult Rehab Caseworker III
Rockport, TX
Monday-Friday 8-5 (Flex)
\$3,143.00-\$3,342.00 Monthly
Posting: #2472
Closes: Until Filled



Coastal Plains Integrated Health is committed to providing a Trauma-informed environment for employees and the people we serve.

About our Organization:

Coastal Plains is a certified community behavioral health center (CCBHC). The center provides behavioral health services, primary health services, and substance use services to children and adults. We offer employees a strong benefit package which includes the above posted salary. Our philosophy is to take care of our employees so they can take care of the people we serve.

Youth Case III Manager Responsibilities:

Works as a member of an integrated treatment team. Staff is responsible for providing rehabilitation, Crisis services and support services, to Adult consumers identified with severe and persistent mental illness. Services provided to individuals in authorized level of care include Pharmacological management services, and rehabilitation services. Nature of work requires frequent in-person, long-term contact with individuals, family members, and service providers. Job performance requires an automobile, extensive travel, and flexible hours to provide services. Job also requires staff to facilitate skills activities in a group or individual setting to clients served by Coastal Plains Community Center. Works under the supervision of the Clinic Director or designee. Job requires high level of clinical skills necessary for independent judgment.

MINIMUM QUALIFICATIONS:

A bachelor's degree from an accredited college or university that allows for QMHP-CS/QIDD credentialing. Applicants with a major in another field will be considered for an interview if there is at least twenty-four hours (24) of course work in Social, Behavioral Health, or Human services. Salary is commensurate with education and experience per Coastal Plains' career ladder. Class "C" operator's license with evidence of a good driving record. Reliable transportation a must. Must Maintain Class "C" license with less than 10 penalty points and the ability to type 30wpm.

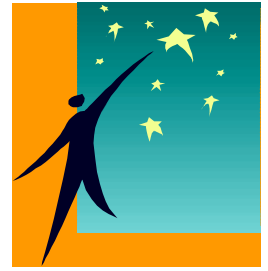
PREFERRED REQUIREMENTS:

- Knowledge of the needs and characteristics associated with the target population.
- Proficient computer skills to perform job functions.
- Ability to communicate effectively both orally and in writing.
- Knowledge of local community resources and how to access those services.
- Ability to demonstrate knowledge on the importance of productivity, time management, and organizational skills.
- Ability to establish a therapeutic relationship with consumers and their support system and to set and maintain boundaries.
- The ability to type 50wpm

BENEFIT PACKAGE:

- Free LPC-A supervision
- A fully funded health, dental, and short-term disability package
- Pet Insurance
- \$10,000 employer sponsored life insurance
- Elective life up to 100k guaranteed issue at sign on
- Employer sponsored retirement plan 401(a) with 150% matching funds
- Elective retirement plan 403(b) option
- 15 paid holidays
- 156 hours of paid vacation
- Loan forgiveness facility
- Longevity pay
- Potential end of year merit

Care Coordinator/Case Manager III
Taft, TX
Monday-Friday 8-5 (Flex)
\$3,143.00-\$3,342.00 Monthly
Posting: #2476
Closes: Until Filled



Coastal Plains Integrated Health is committed to providing a Trauma-informed environment for employees and the people we serve.

About our Organization:

Coastal Plains is a certified community behavioral health center (CCBHC). The center provides behavioral health services, primary health services, and substance use services to children and adults. We offer employees a strong benefit package which includes the above posted salary. Our philosophy is to take care of our employees so they can take care of the people we serve.

Adult Case Manager III Responsibilities:

Care Coordinators (CC) coordinate access to medical services and increase continuity of care by managing relationships with tertiary care providers, transitions-in-care, and following referrals to other allied health care professionals for the physical health needs of CPIH consumers. Care Coordinators coordinate, promote timely access to appropriate care, increase utilization of preventative care, reduce emergency room utilization and hospital readmissions, and increase health comprehension through culturally and linguistically appropriate education, case management, and medication training and supports. Care coordination requires closing the loop on referrals, exchanging records of services among providers, tracking transitions of care (admissions to and discharges from high levels of care), and active follow-up. Care Coordinators coordinate access to physical healthcare by arranging and tracking appointments, educating clients/families/LARs about health matters and coordinating services for other aspects of CPIH consumers' well-being. Care Coordinators report directly to the Care Coordination Supervisor with clinical oversight by the Clinic Directors.

MINIMUM QUALIFICATIONS:

A Bachelor's Degree from an accredited college or university with a major in Social, Behavioral, or Human Services which is defined as Psychology, Social Work, Medicine, Nursing, Rehabilitation, Counseling, Sociology, Human Growth and Development, Physician Assistant, Gerontology, Special Education, Educational Psychology, Early Childhood Education, or Early Childhood Intervention. Applicants with a major in another field will be considered for an interview if there is at least twenty-four hours (24) of course work in Social, Behavioral Health, or Human services. Must have a valid Class C Texas Driver's license with evidence of a good driving record. Ability to type 30wpm.

PREFERRED REQUIREMENTS:

- Minimum proficiency with computer software as demonstrated by knowledge of Microsoft applications.
- Bilingual (English-Spanish)
- Lives within Service area
- Excellent verbal and written communication skills as demonstrated by oral and written interview.
- Experience working with this target population
- The ability to type 50wpm

BENEFIT PACKAGE:

- Free LPC-A supervision
- A fully funded health, dental, and short-term disability package
- Pet Insurance
- \$10,000 employer sponsored life insurance
- Elective life up to 100k guaranteed issue at sign on
- Employer sponsored retirement plan 401(a) with 150% matching funds
- Elective retirement plan 403(b) option
- 15 paid holidays
- 156 hours of paid vacation
- Loan forgiveness facility
- Longevity pay
- Potential end of year merit

Program Facilitator/HST II, III, IV
Taft, TX
Monday-Friday 8-5 (Flex)
\$1,869.00-\$2,206.00 Monthly
Posting: #2478
Closes: Until Filled



Coastal Plains Integrated Health is committed to providing a Trauma-informed environment for employees and the people we serve.

About our Organization:

Coastal Plains is a certified community behavioral health center (CCBHC). The center provides behavioral health services, primary health services, and substance use services to children and adults. We offer employees a strong benefit package which includes the above posted salary. Our philosophy is to take care of our employees so they can take care of the people we serve.

Program Facilitator/HST II, III, IV Responsibilities:

This position is based in Taft, TX, at the Coastal Plains IDD ISS Center. The Program Facilitator is responsible for implementing training strategies; transporting consumers including but not limited to lifting and loading wheelchairs as needed, providing job coaching and assisting consumers with self-help and activities of daily living. Other job duties involve teaching and assisting persons with intellectual disabilities, supervision with daily activities of money management, cooking, nutrition, safety, and other duties as assigned, etc. Periodic assistance with medical appointments, community activities, and rotating weekends is included.

Documentation of services, Medicaid billing, and maintenance of vehicles are also applicable job duties. This position is under the immediate supervision of the Coordinator of Day Services.

MINIMUM QUALIFICATIONS:

High school diploma or GED certificate. Related experience with persons with disabilities. Must possess Class C operator's license with good driving record as evidence by a driver's license check and with proof of liability insurance. Type 30 WPM, and ability to lift 45lbs or more and the ability to push and pull a wheelchair with client.

PREFERRED REQUIREMENTS:

- Work history demonstrating an ability to work under minimal supervision.
- Stable work record demonstrated by longevity with previous employer. (2 yrs. or longer)
- Have related job experience with individuals with IDD.
- Trauma Informed
- HCS and TxHmL Waiver services experience
- Certified Nursing Assistant (CNA) or Certified Medical Assistant (CMA) (current certification)
- Type a minimum of 50 WPM

BENEFIT PACKAGE:

- A fully funded health, dental, and short-term disability package
- Pet Insurance
- \$10,000 employer sponsored life insurance
- Elective life up to 100k guaranteed issue at sign on
- Employer sponsored retirement plan 401(a) with 150% matching funds
- Elective retirement plan 403(b) option
- 15 paid holidays
- 156 hours of paid vacation
- Loan forgiveness facility
- Longevity pay
- Potential end of year merit

Secretary III
Alice, TX
Monday – Friday 8am-5pm (flex)
\$1,971.00 Monthly
Posting: #2479
Closes: Until Filled



Coastal Plains Integrated Health is committed to providing a Trauma-informed environment for employees and the people we serve.

About our Organization:

Coastal Plains is a certified community behavioral health center (CCBHC). The center provides behavioral health services, primary health services, and substance use services to children and adults. We offer employees a strong benefit package which includes the above posted salary. Our philosophy is to take care of our employees so they can take care of the people we serve.

Secretary III Responsibilities:

The Secretary III performs routine secretarial tasks with limited latitude for decision-making in carrying out routine phases of the work, which includes running reports, data entry, editing and typing various types of documents, distributing mail, maintaining financials, completing intake/annual documentation and communicating (either face to face or by telephone) with the various members of the community represented by CPCC. The secretary performs other duties as assigned or appropriate to fulfill the needs of the center. The Clerical Supervisor III supervises the Secretary.

MINIMUM QUALIFICATIONS:

A high school diploma or GED certificate, plus one (1) year secretarial and clerical experience or training. Must have a valid class "C" Texas Driver's license, with a good driving record and the ability to type 30wpm.

PREFERRED REQUIREMENTS:

- Medical Records experience.
- Proficient in typing skills as evidenced by administered typing test (50 WPM).
- Excellent computer skills with knowledge of Microsoft Word and Excel.
- Ability to work independently, and communicate efficiently with clients as well as other community professionals.
- Bilingual English/Spanish.

BENEFIT PACKAGE:

- A fully funded health, dental, vision package and short-term disability
- Pet Insurance
- \$10,000 employer sponsored life insurance
- Elective life up to 100k guaranteed issue at sign on
- Employer sponsored retirement plan 401(a) with 150% matching funds
- Elective retirement plan 403(b) option
- 14 paid holidays
- 156 hours of paid vacation
- Longevity pay
- Potential end of year merit

LVN II
Kingsville/Falfurrias, TX
Monday-Friday 8-5 (Flex)
\$3,283.00 Monthly
Posting: #2480
Closes: Until Filled



Coastal Plains Integrated Health is committed to providing a Trauma-informed environment for employees and the people we serve.

About our Organization:

Coastal Plains is a certified community behavioral health center (CCBHC). The center provides behavioral health services, primary health services, and substance use services to children and adults. We offer employees a strong benefit package which includes the above posted salary. Our philosophy is to take care of our employees so they can take care of the people we serve.

LVN II Responsibilities:

The position of Licensed Vocational Nurse, Mental Health Services, is designed to ensure the effective and efficient delivery of nursing services to mental health consumers enrolled in Coastal Plains Integrated Health Center. This position is a great opportunity for individuals looking for a career in behavioral health. LVNs coordinate and assist the clinic psychiatrist/ Nurse Practitioners on scheduled clinic days; coordinates medication services and assessments to consumers, to include injections and medication education. The LVN will assist in Falfurrias on clinic days with the Psychiatrist/ Nurse Practitioners. LVN serves both the needs of adult and child services. Reports clinically to the Director of Nursing and administratively to the assigned Clinic Director.

MINIMUM QUALIFICATIONS:

Graduate from accredited school of nursing. LVN holds current unrestricted license as a licensed vocational nurse in the State of Texas. Ability to maintain Class C driver's license with less than 10 penalty points. Ability to type 30wpm.

PREFERRED REQUIREMENTS:

- Applicant has knowledge in Office, Outlook and Excel.
- Ability to type 50wpm.
- Applicant lives within 30-minute commute from Clinic.
- Applicant has experience working in an outpatient setting.
- Applicant has experience working with individuals diagnosed with a mental illness.
- Type a minimum of 50 WPM

BENEFIT PACKAGE:

- A fully funded health, dental, and short-term disability package
- Pet Insurance
- \$10,000 employer sponsored life insurance
- Elective life up to 100k guaranteed issue at sign on
- Employer sponsored retirement plan 401(a) with 150% matching funds
- Elective retirement plan 403(b) option
- 15 paid holidays
- 156 hours of paid vacation
- Loan forgiveness facility
- Longevity pay
- Potential end of year merit

Youth Case Manager III
Beeville, TX
Monday-Friday 8-5 (Flex)
\$3,143.00-\$3,342.00.00 Monthly
Posting: #2481
Closes: Until Filled



Coastal Plains Integrated Health is committed to providing a Trauma-informed environment for employees and the people we serve.

About our Organization:

Coastal Plains is a certified community behavioral health center (CCBHC). The center provides behavioral health services, primary health services, and substance use services to children and adults. We offer employees a strong benefit package which includes the above posted salary. Our philosophy is to take care of our employees so they can take care of the people we serve.

Youth Case Manager III Responsibilities:

Works with the Center's Youth and Adolescent program to help clients improve mental health symptoms by providing Case management, Rehabilitative Skills Training and support services. Works closely with other youth team members and community partners. Nature of work involves virtual care, and in-person contact with individuals and their caretaker at the office, school and/or home location. Job requires some clinical skills necessary for independent judgement. Job performance requires an automobile, and flexible hours to provide services. Works under the supervision of the Beeville Clinic Director.

MINIMUM QUALIFICATIONS:

Bachelor's degree from an accredited college or university with a major in social, behavioral health, or human services. Salary is commensurate with education and experience per Coastal Plains' career ladder. Must be able to complete a typing test with a result of at least 30 words per minute.

Applicants with a major in another field will be considered for an interview if there is at least twenty-four hours (24) of course work in Social, Behavioral Health, or Human Services.

PREFERRED REQUIREMENTS:

- Knowledge of Microsoft office and basic computer skills
- Able to communicate orally in Spanish.
- One-year experience in MH Case management/rehab skills training.
- One Year Experience working with youth, adolescents and families
- Maintain class "C" license with less than 10 penalty points
- Master's degree in major of social, behavior health or human services.
- The ability to type 50wpm

BENEFIT PACKAGE:

- Free LPC-A supervision
- A fully funded health, dental, and short-term disability package
- Pet Insurance
- \$10,000 employer sponsored life insurance
- Elective life up to 100k guaranteed issue at sign on
- Employer sponsored retirement plan 401(a) with 150% matching funds
- Elective retirement plan 403(b) option
- 15 paid holidays
- 156 hours of paid vacation
- Loan forgiveness facility
- Longevity pay
- Potential end of year merit

Adult Case Manager III
Beeville, TX
Monday-Friday 8-5 (Flex)
\$3,143.00-\$3,342.00.00 Monthly
Posting: #2482
Closes: Until Filled



Coastal Plains Integrated Health is committed to providing a Trauma-informed environment for employees and the people we serve.

About our Organization:

Coastal Plains is a certified community behavioral health center (CCBHC). The center provides behavioral health services, primary health services, and substance use services to children and adults. We offer employees a strong benefit package which includes the above posted salary. Our philosophy is to take care of our employees so they can take care of the people we serve.

Youth Case Manager III Responsibilities:

Works as a member of an integrated treatment team. Staff is responsible for providing rehabilitation, and support services to consumers identified with severe and persistent mental illness. Services provided to individuals in authorized service package include Pharmacological management services, and rehabilitation services. Nature of work requires frequent in-person, long-term contact with individuals, family members, and service providers. Job also requires staff to facilitate skills activities in a group or individual setting to clients served by CPIH. Works under the supervision of the Clinic Director or designee. Job requires high level of clinical skill necessary for independent judgment.

MINIMUM QUALIFICATIONS:

Bachelor's degree from an accredited college or university with a major in Social, Behavioral Health, or Human Services. Must have a valid Class C Texas Driver's license with evidence of a good driving record. Must be able to type at least 30 words per minute. Applicants with a major in another field will be considered for an interview if there is at least twenty-four hours (24) of course work in Social, Behavioral Health, or Human Services.

PREFERRED REQUIREMENTS:

- Minimum proficiency with computer software as demonstrated by knowledge of Microsoft Applications.
- Lives within service area.
- Excellent verbal and written communication skills as demonstrated by oral and written interview.
- Ability to communicate in Spanish.
- Experience working with this target population (adults and children) who are experiencing crisis situations.
- The ability to type 50wpm

BENEFIT PACKAGE:

- Free LPC-A supervision
- A fully funded health, dental, and short-term disability package
- Pet Insurance
- \$10,000 employer sponsored life insurance
- Elective life up to 100k guaranteed issue at sign on
- Employer sponsored retirement plan 401(a) with 150% matching funds
- Elective retirement plan 403(b) option
- 15 paid holidays
- 156 hours of paid vacation
- Loan forgiveness facility
- Longevity pay
- Potential end of year merit

Human Services Tech II, III, IV, V
Portland, TX Group Home
Friday 2:00pm-10pm Saturday-Sunday 6:00am to 10:00pm
\$1,869.00-\$2,206.00 Monthly
Posting: #2483
Closes: Until Filled



Coastal Plains Integrated Health is committed to providing a Trauma-informed environment for employees and the people we serve.

About our Organization:

Coastal Plains is a certified community behavioral health center (CCBHC). The center provides behavioral health services, primary health services, and substance use services to children and adults. We offer employees a strong benefit package which includes the above posted salary. Our philosophy is to take care of our employees so they can take care of the people we serve.

Human Services Tech responsibilities:

This position is primarily responsible for assisting cognitively challenged individuals in a group home setting. This position provides direct care, supervision, and training. Duties include transporting individuals, self-help or independent living skills training, documentation, maintenance of home, medical appointments, and assisting with their finances. This position reports to the Director of Waiver Services. Must have a class "C" driver's license.

MINIMUM QUALIFICATIONS:

A high school diploma or GED certificate, a valid class "C" Texas Driver's license, with a good driving record and the ability to type 30wpm. Must be able to lift 45lbs or more and the ability to push and pull a wheelchair with client.

PREFERRED REQUIREMENTS:

- Work history demonstrating an ability to work under minimal supervision.
- Stable work record demonstrated by longevity with previous employer (Two years or longer).
- Local residency within 20 minutes commute of duty station.
- Previous experience working with persons with cognitive disabilities.

BENEFIT PACKAGE:

- Pay enhancement for CMA or CNA certification
- A fully funded health, dental, vision package and short-term disability
- Pet Insurance
- \$10,000 employer sponsored life insurance
- Elective life up to 100k guaranteed issue at sign on
- Employer sponsored retirement plan 401(a) with 150% matching funds
- Elective retirement plan 403(b) option
- 15 paid holidays
- 156 hours of paid vacation
- Longevity pay
- Potential end of year merit

Secretary III
San Diego, TX
Monday – Friday 8am-5pm (flex)
\$1,971.00 Monthly
Posting: #2479
Closes: Until Filled



Coastal Plains Integrated Health is committed to providing a Trauma-informed environment for employees and the people we serve.

About our Organization:

Coastal Plains is a certified community behavioral health center (CCBHC). The center provides behavioral health services, primary health services, and substance use services to children and adults. We offer employees a strong benefit package which includes the above posted salary. Our philosophy is to take care of our employees so they can take care of the people we serve.

Secretary III Responsibilities:

The Secretary III performs routine secretarial tasks with limited latitude for decision-making in carrying out routine phases of the work, which includes running reports, data entry, editing and typing various types of documents, distributing mail, maintaining financials, completing intake/annual documentation and communicating (either face to face or by telephone) with the various members of the community represented by CPCC. The secretary performs other duties as assigned or appropriate to fulfill the needs of the center. The Clerical Supervisor III supervises the Secretary.

MINIMUM QUALIFICATIONS:

A high school diploma or GED certificate, plus one (1) year secretarial and clerical experience or training. Must have a valid class "C" Texas Driver's license, with a good driving record and the ability to type 30wpm.

PREFERRED REQUIREMENTS:

- Medical Records experience.
- Proficient in typing skills as evidenced by administered typing test (50 WPM).
- Excellent computer skills with knowledge of Microsoft Word and Excel. •
- Ability to work independently, and communicate efficiently with clients as well as other community professionals.
- Bilingual English/Spanish.

BENEFIT PACKAGE:

- A fully funded health, dental, vision package and short-term disability
- Pet Insurance
- \$10,000 employer sponsored life insurance
- Elective life up to 100k guaranteed issue at sign on
- Employer sponsored retirement plan 401(a) with 150% matching funds
- Elective retirement plan 403(b) option
- 14 paid holidays
- 156 hours of paid vacation
- Longevity pay
- Potential end of year merit

Jail Diversion Specialist/Case Manager III
Alice, TX
Monday-Friday 8-5 (Flex)
\$3,143.00-3,342.00 Monthly
Posting: #2485
Closes: Until Filled



Coastal Plains Integrated Health is committed to providing a Trauma-informed environment for employees and the people we serve.

About our Organization:

Coastal Plains is a certified community behavioral health center (CCBHC). The center provides behavioral health services, primary health services, and substance use services to children and adults. We offer employees a strong benefit package which includes the above posted salary. Our philosophy is to take care of our employees so they can take care of the people we serve.

Rehab Caseworker III/Case Manager Responsibilities:

Works as a member of an integrated treatment team. Staff is responsible for providing rehabilitation, and support services to consumers identified with severe and persistent mental illness. Services provided to individuals in authorized service package include Pharmacological management services, and rehabilitation services. Nature of work requires frequent in-person, long-term contact with individuals, family members, and service providers. Job also requires staff to facilitate skills activities to individuals incarcerated in the Jim Wells county jail. Works under the supervision of the Clinic Director or designee. Job requires high level of clinical skill necessary for independent judgment.

MINIMUM QUALIFICATIONS:

Bachelor's degree from an accredited college or university with a major in social, behavioral health, or human services. Salary is commensurate with education and experience per Coastal Plains Integrated Health career ladder. Must Maintain Class "C" license with less than 10 penalty points and the ability to type 30wpm.

PREFERRED REQUIREMENTS:

- Excellent computer skills and knowledge of Microsoft office applications.
- Ability to type 50wpm
- Ability to work independently and organize work efficiently.
- Bilingual (English-Spanish)

BENEFIT PACKAGE:

- Free LPC-A supervision
- A fully funded health, dental, and short-term disability package
- Pet Insurance
- \$10,000 employer sponsored life insurance
- Elective life up to 100k guaranteed issue at sign on
- Employer sponsored retirement plan 401(a) with 150% matching funds
- Elective retirement plan 403(b) option
- 15 paid holidays
- 156 hours of paid vacation
- Loan forgiveness facility
- Longevity pay
- Potential end of year merit